

6

5

4

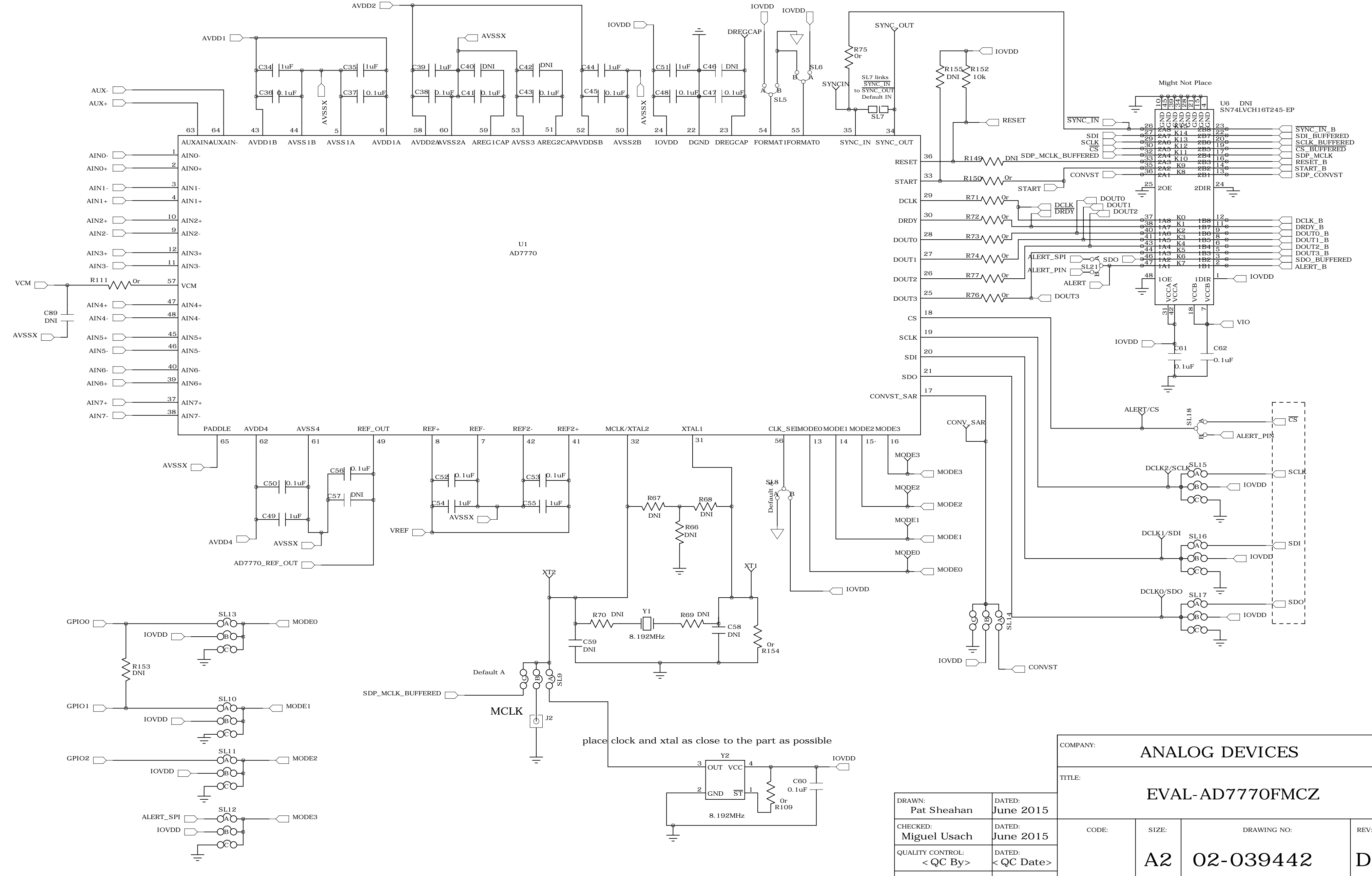
3

2

1

REVISION RECORD			
LTR	ECO NO:	APPROVED:	DATE:

Default Setting:
 ADC DEFAULT SPI MODE
 FORMAT0 (SL5), FORMAT1 (SL6) = A. A



place clock and xtal as close to the part as possible

COMPANY: ANALOG DEVICES			
TITLE: EVAL-AD7770FMCZ			
CODE:	SIZE:	DRAWING NO:	REV:
A2	02-039442		D
SHEET: 1 OF 7			

DRAWN: Pat Sheahan	DATED: June 2015
CHECKED: Miguel Usach	DATED: June 2015
QUALITY CONTROL: < QC By >	DATED: < QC Date >
RELEASED: < Released By >	DATED: < Release Date >

SCALE: < Scale >

6

5

4

3

2

1

REVISION RECORD			
LTR	ECO NO:	APPROVED:	DATE:

D

D

C

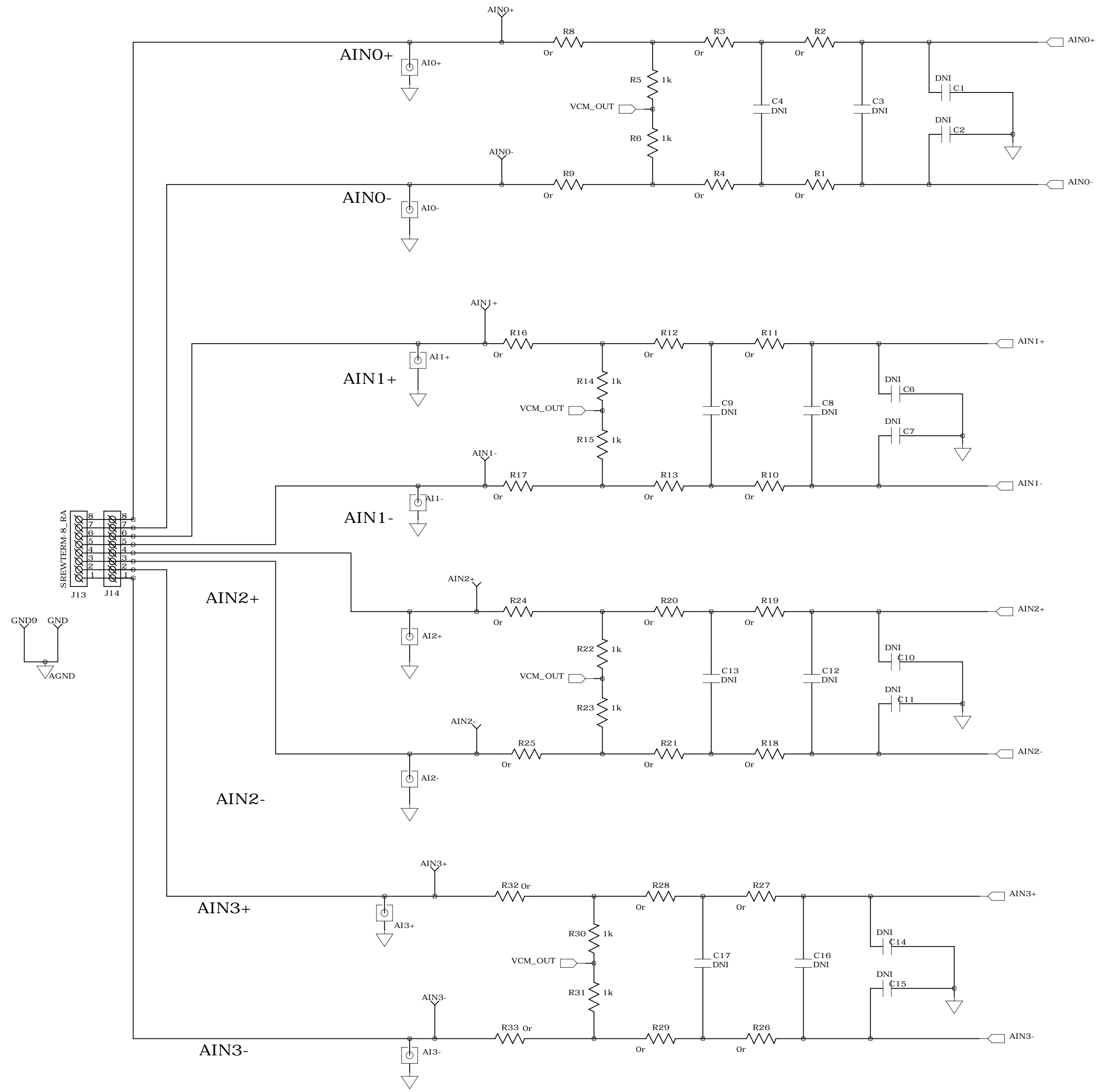
C

B

B

A

A



COMPANY:				ANALOG DEVICES			
TITLE:				EVAL-AD7770FMCZ			
CODE:	SIZE:	DRAWING NO:		REV:			
A2	02	02-039442		D			

DRAWN: Pat Sheahan	DATED: June 2015
CHECKED: Miguel Usach	DATED: June 2015
QUALITY CONTROL: < QC By >	DATED: < QC Date >
RELEASED: < Released By >	DATED: < Release Date >

SCALE: < Scale > SHEET: 2 OF 7

6

5

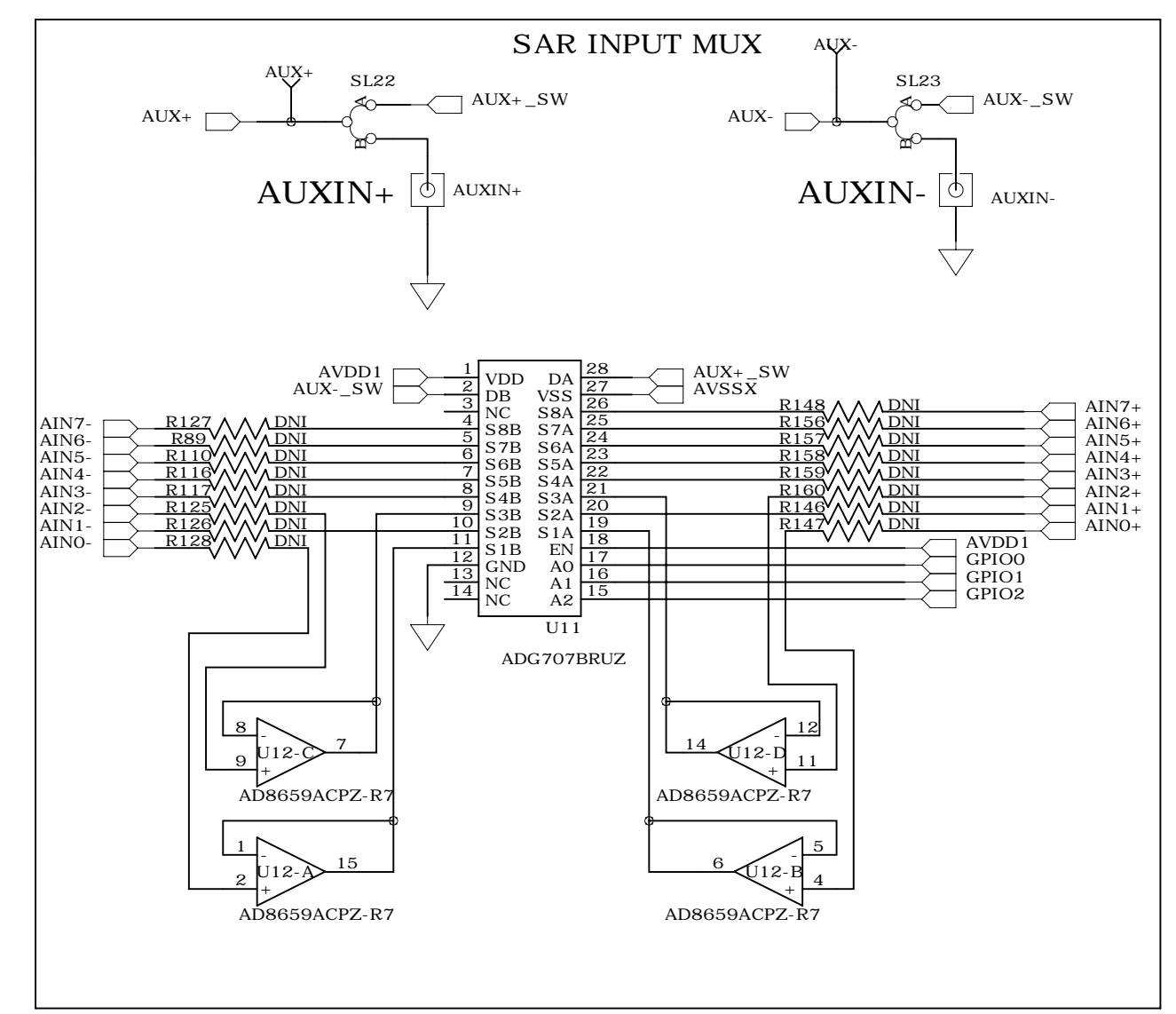
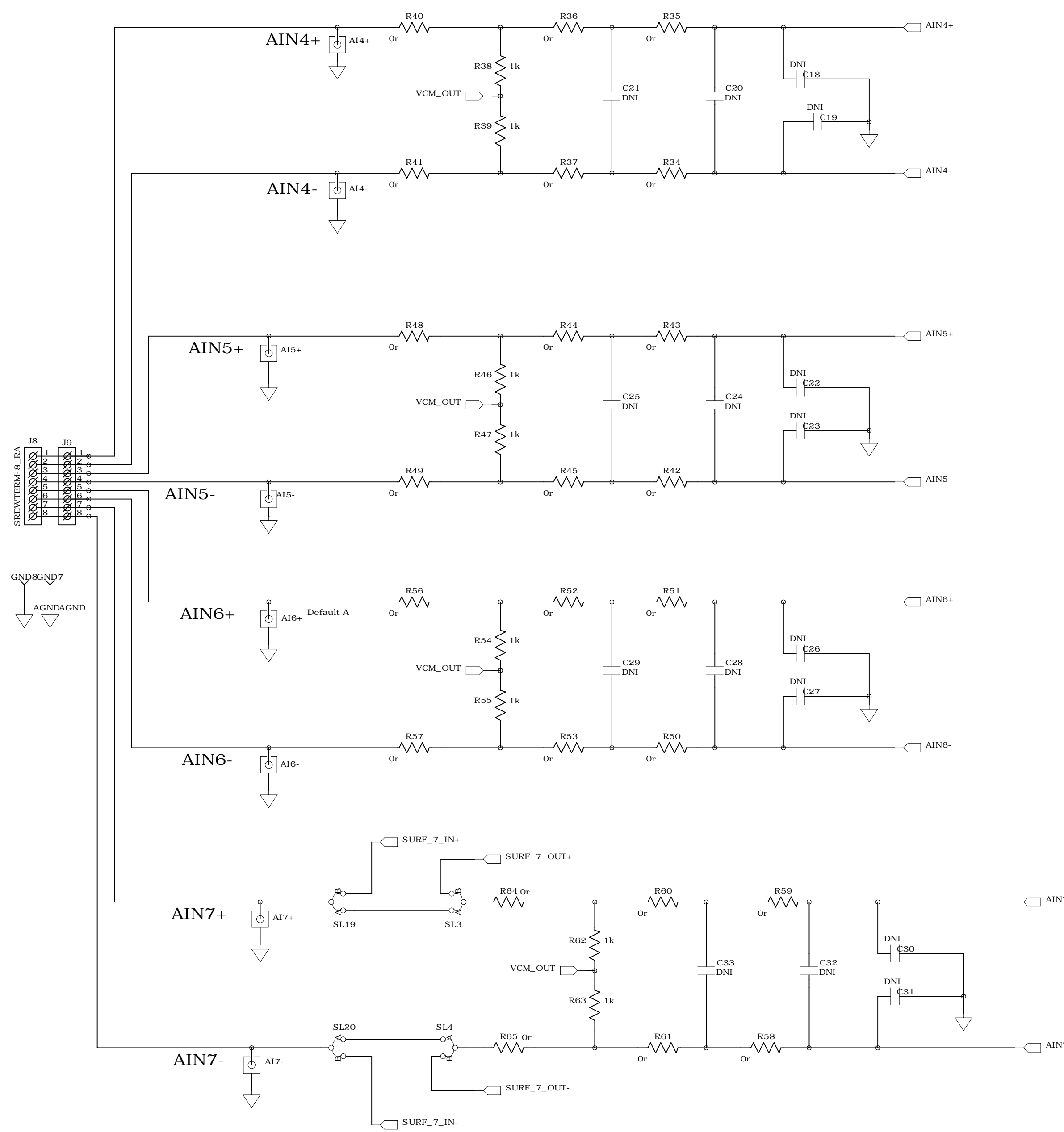
4

3

2

1

REVISION RECORD			
LTR	ECO NO:	APPROVED:	DATE:



COMPANY:				ANALOG DEVICES			
TITLE:				EVAL-AD7770FMCZ			
DRAWN:	DATED:	CODE:	SIZE:	DRAWING NO:	REV:		
Pat Sheahan	June 2015		A2	02-039442	D		
CHECKED:	DATED:						
Miguel Usach	June 2015						
QUALITY CONTROL:	DATED:						
< QC By >	< QC Date >						
RELEASED:	DATED:						
< Released By >	< Release Date >						

6

5

4

3

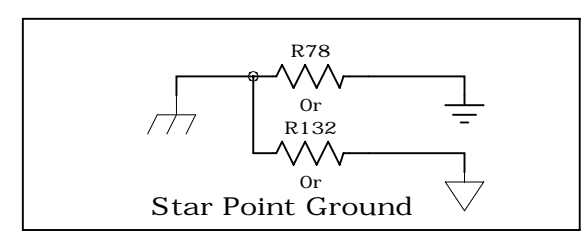
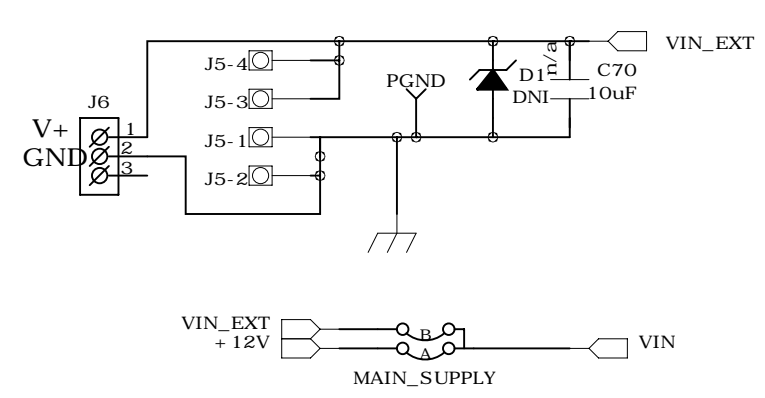
2

1

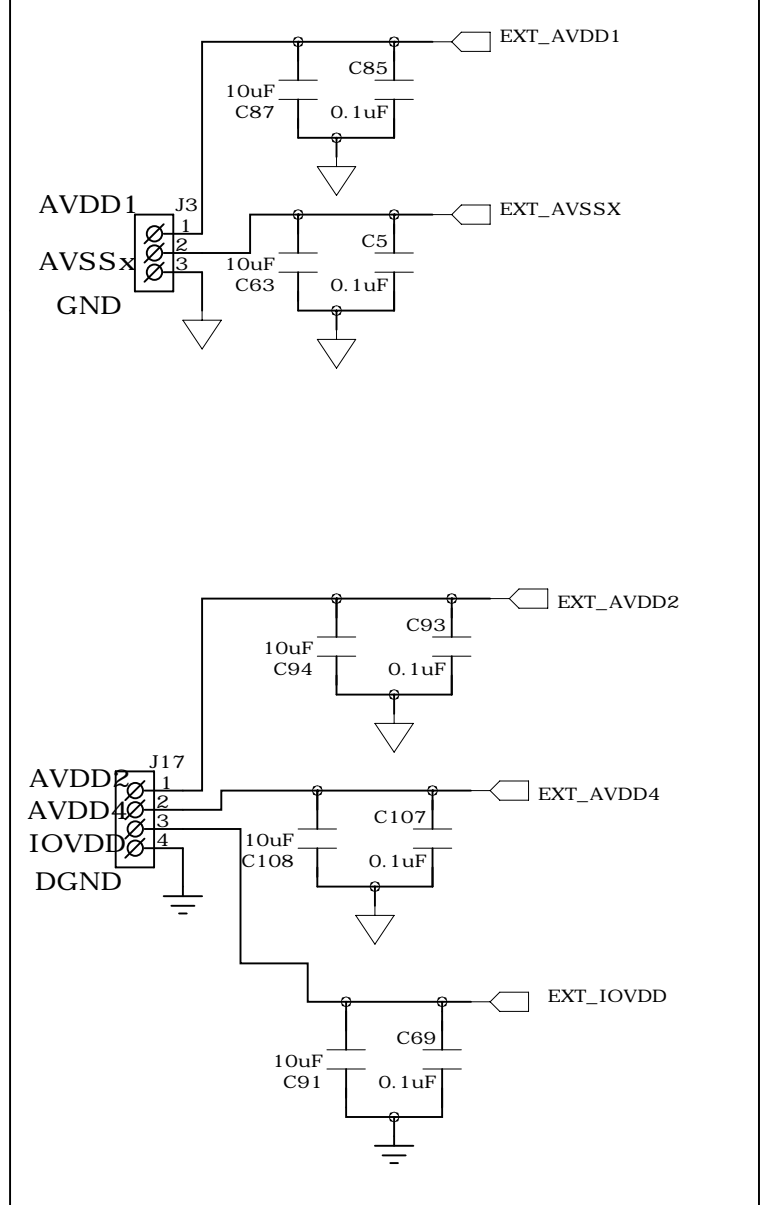
REVISION RECORD			
LTR	ECO NO:	APPROVED:	DATE:

POWER SUPPLY : Jack/Bench or FMZ Connection

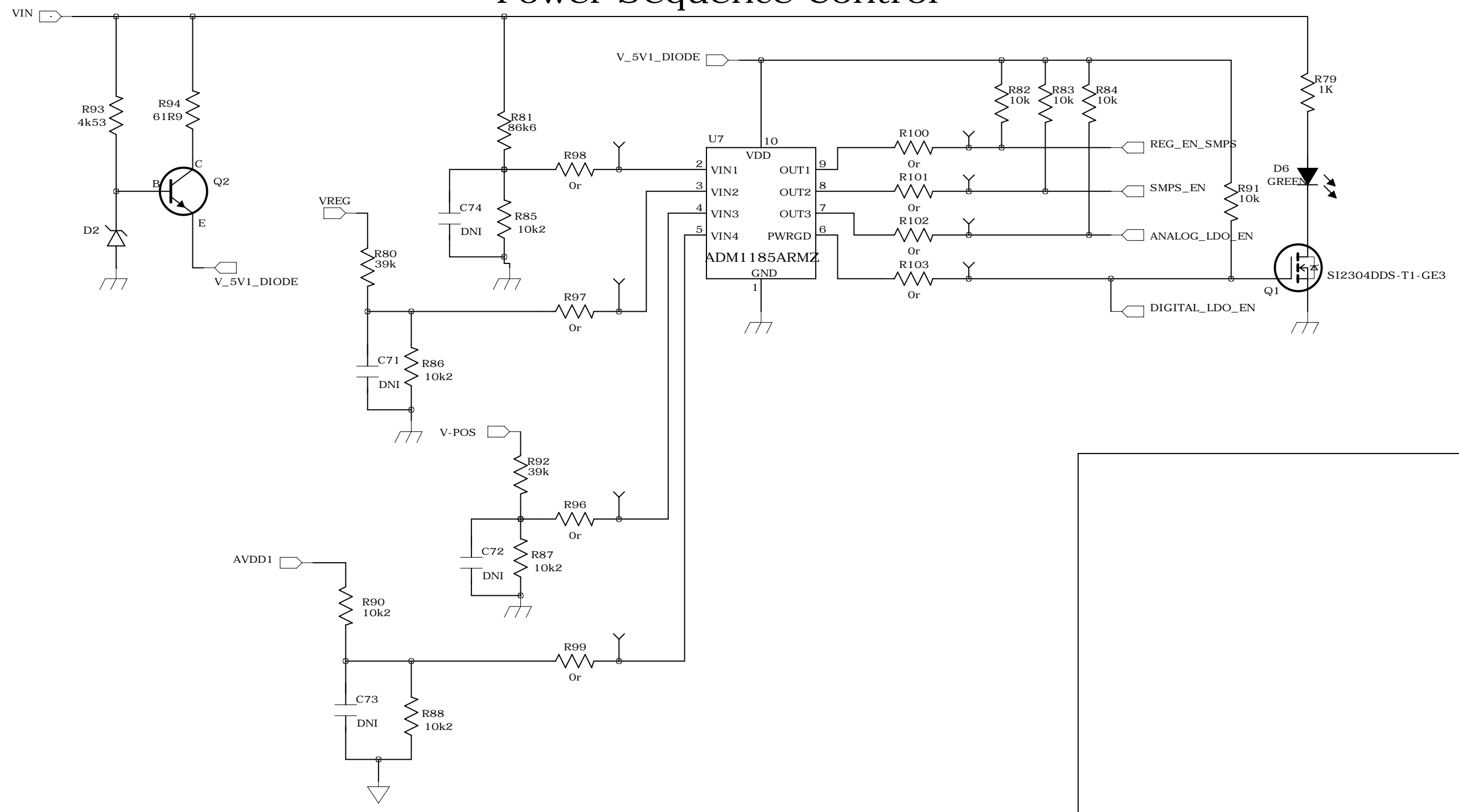
J6 = Jack Connector



External supply: Stand-Alone Operation



Power Sequence Control



COMPANY: ANALOG DEVICES

TITLE: EVAL-AD7770FMCZ

DRAWN: Pat Sheahan	DATED: June 2015
CHECKED: Miguel Usach	DATED: June 2015
QUALITY CONTROL: < QC By >	DATED: < QC Date >
RELEASED: < Released By >	DATED: < Release Date >

CODE:	SIZE:	DRAWING NO:	REV:
	A2	02-039442	D

6

5

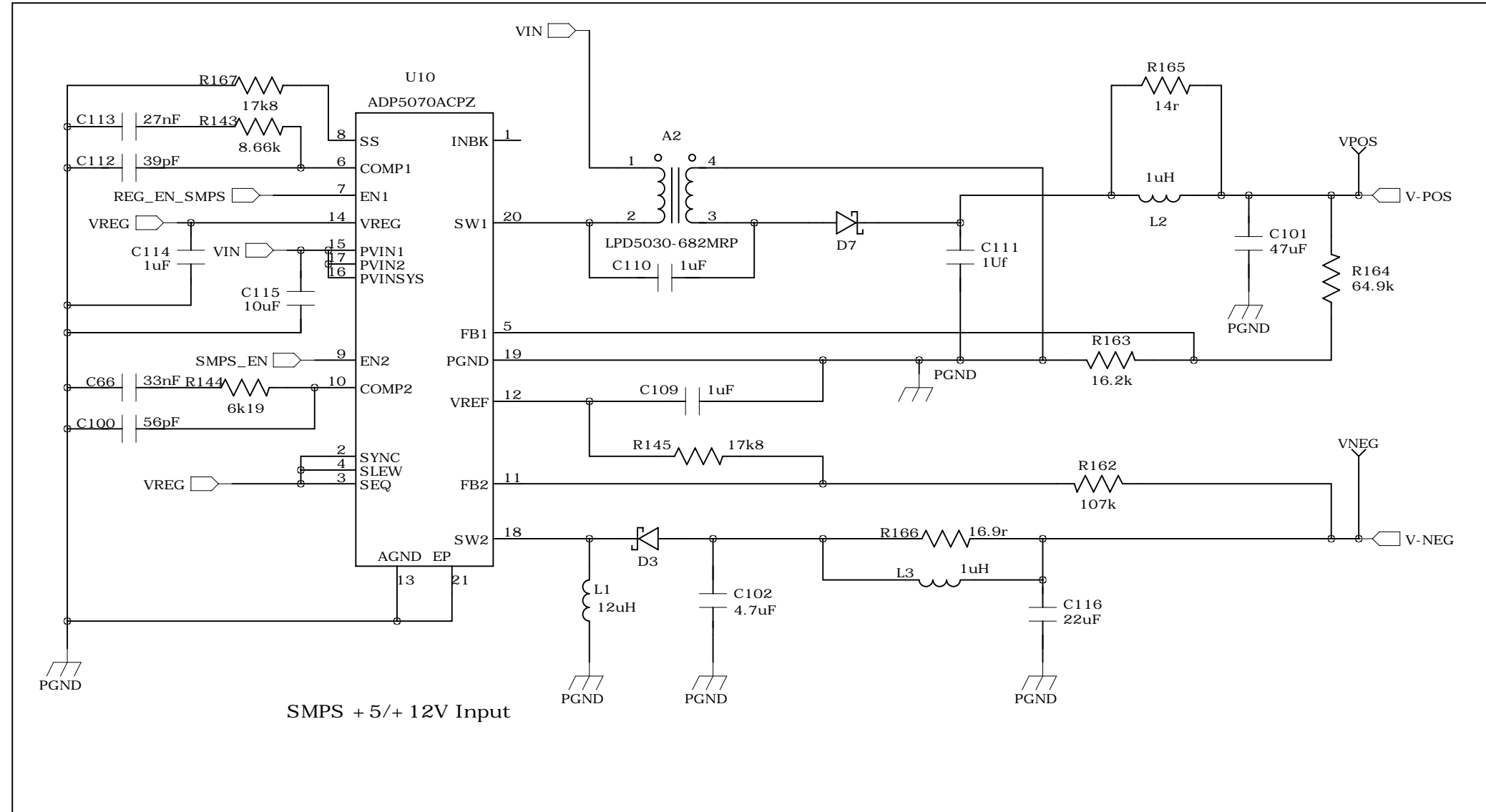
4

3

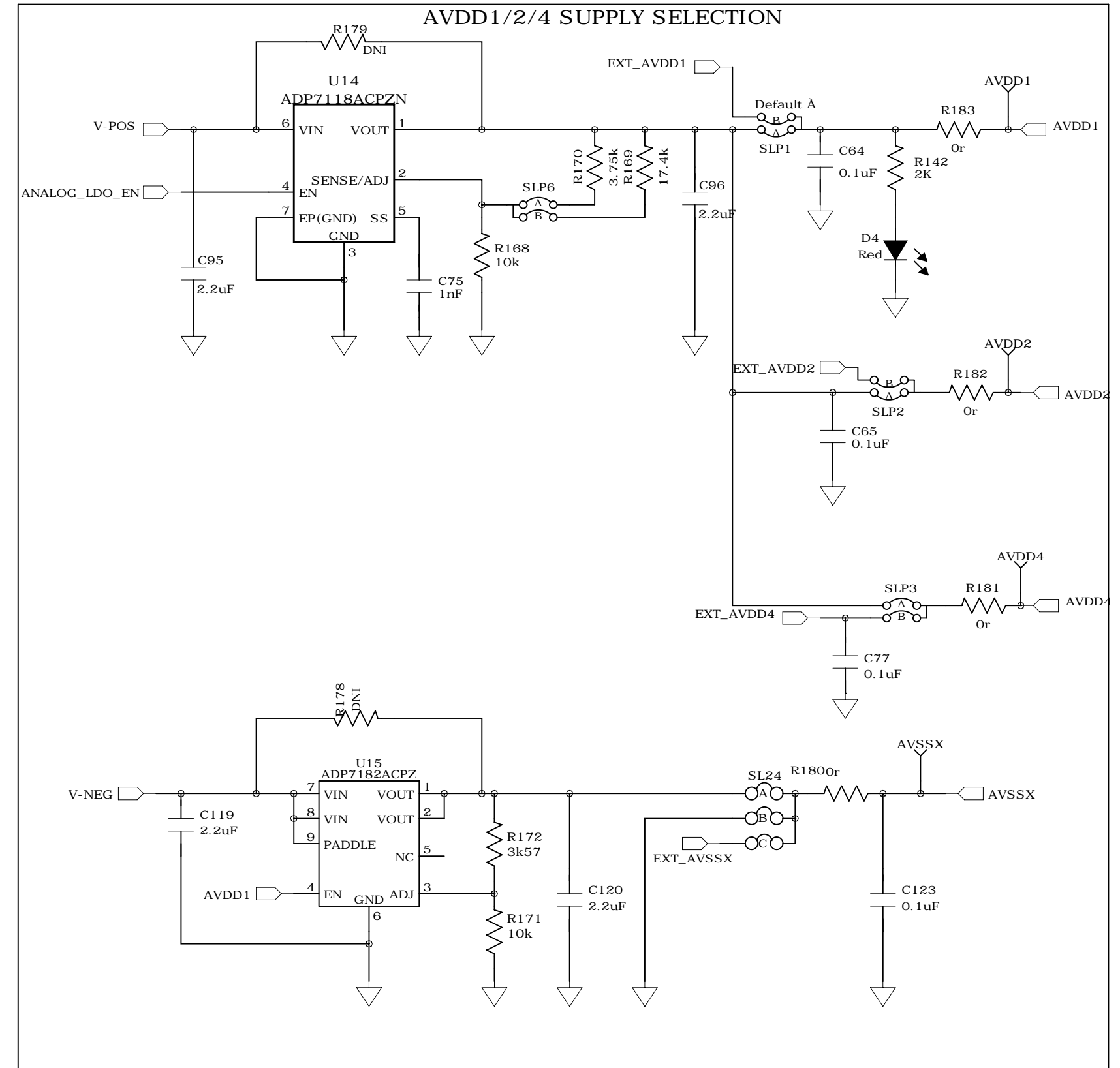
2

1

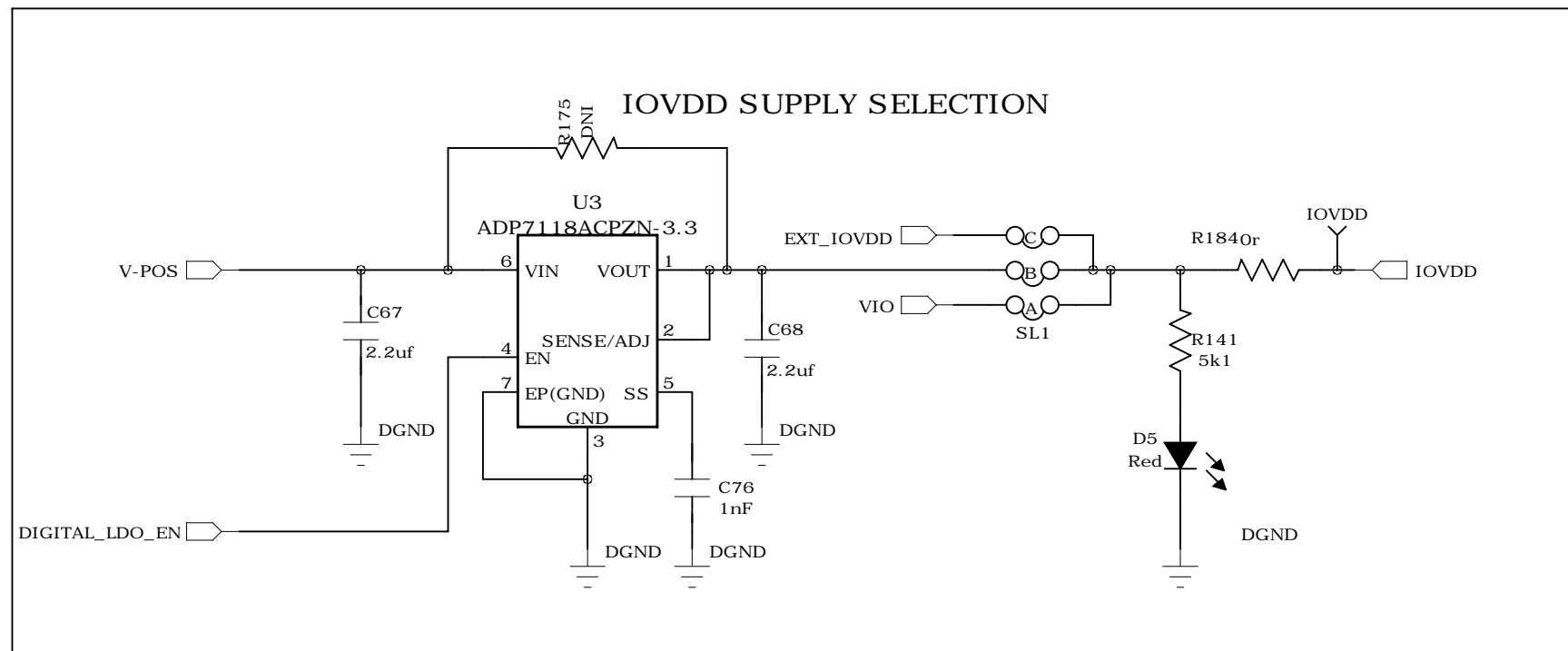
REVISION RECORD			
LTR	ECO NO:	APPROVED:	DATE:



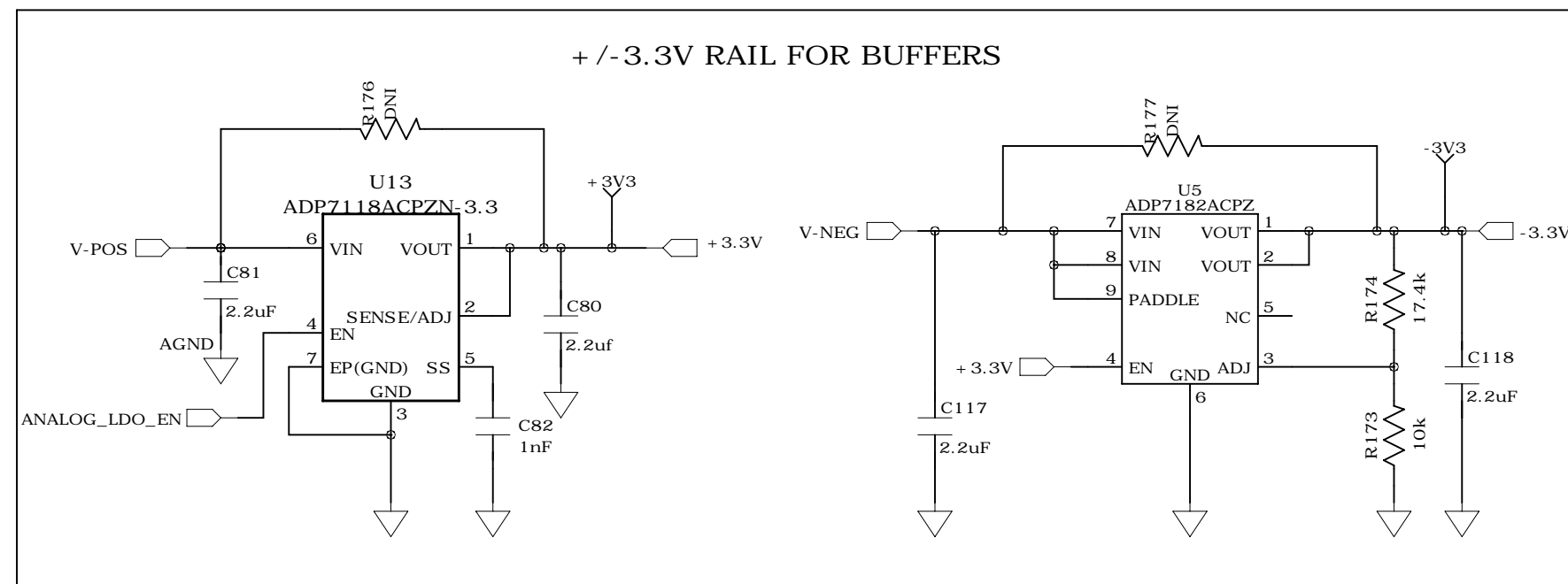
SMPS +5/+12V Input



AVDD1/2/4 SUPPLY SELECTION



IOVDD SUPPLY SELECTION

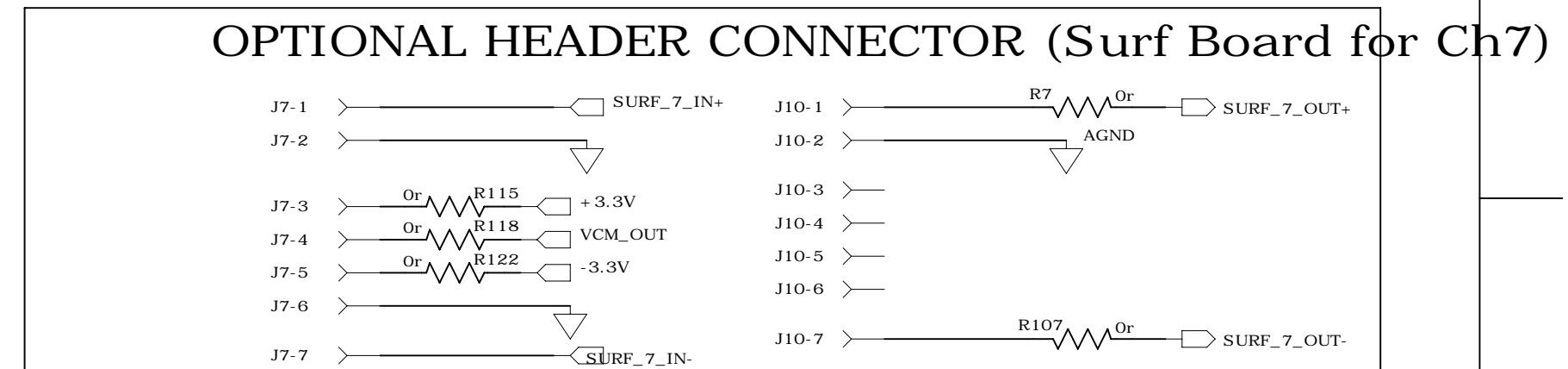
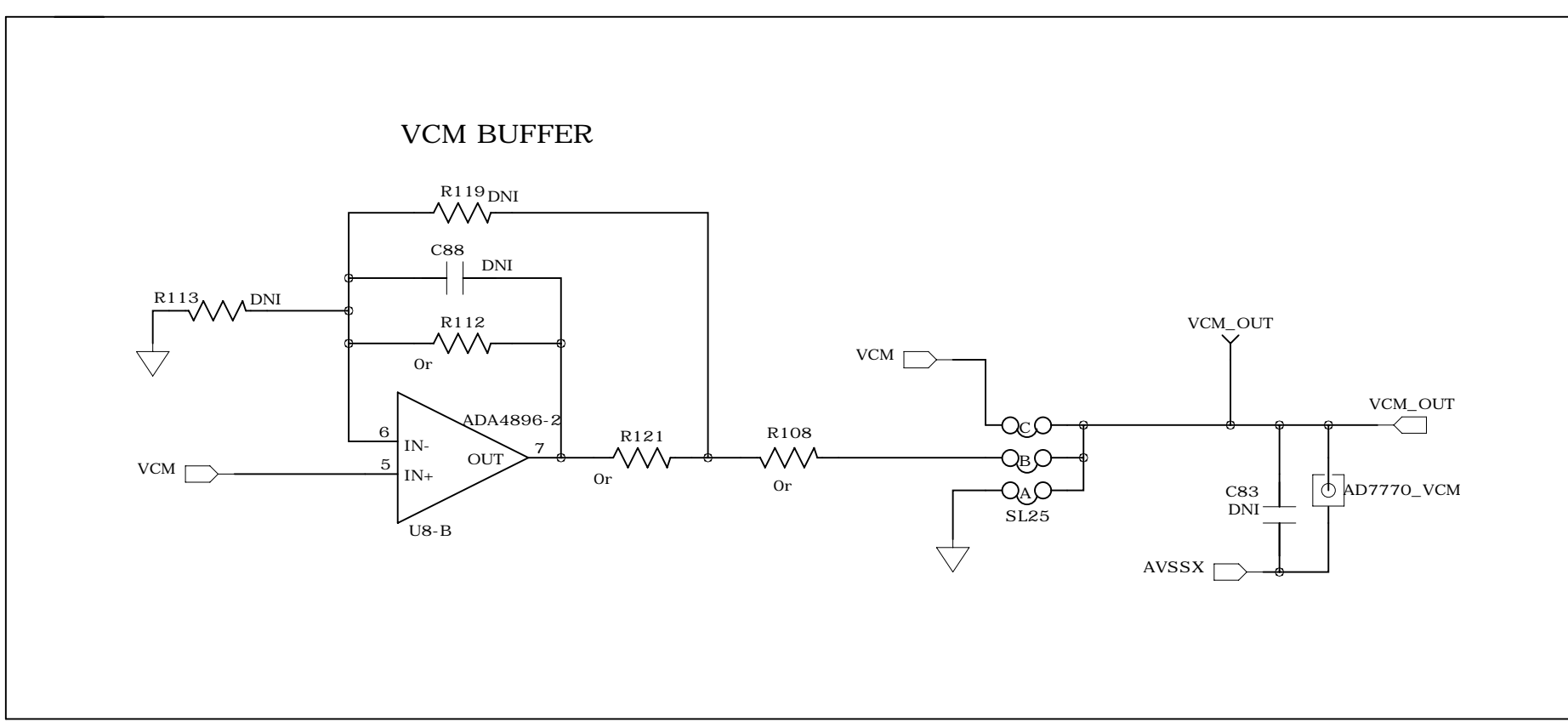
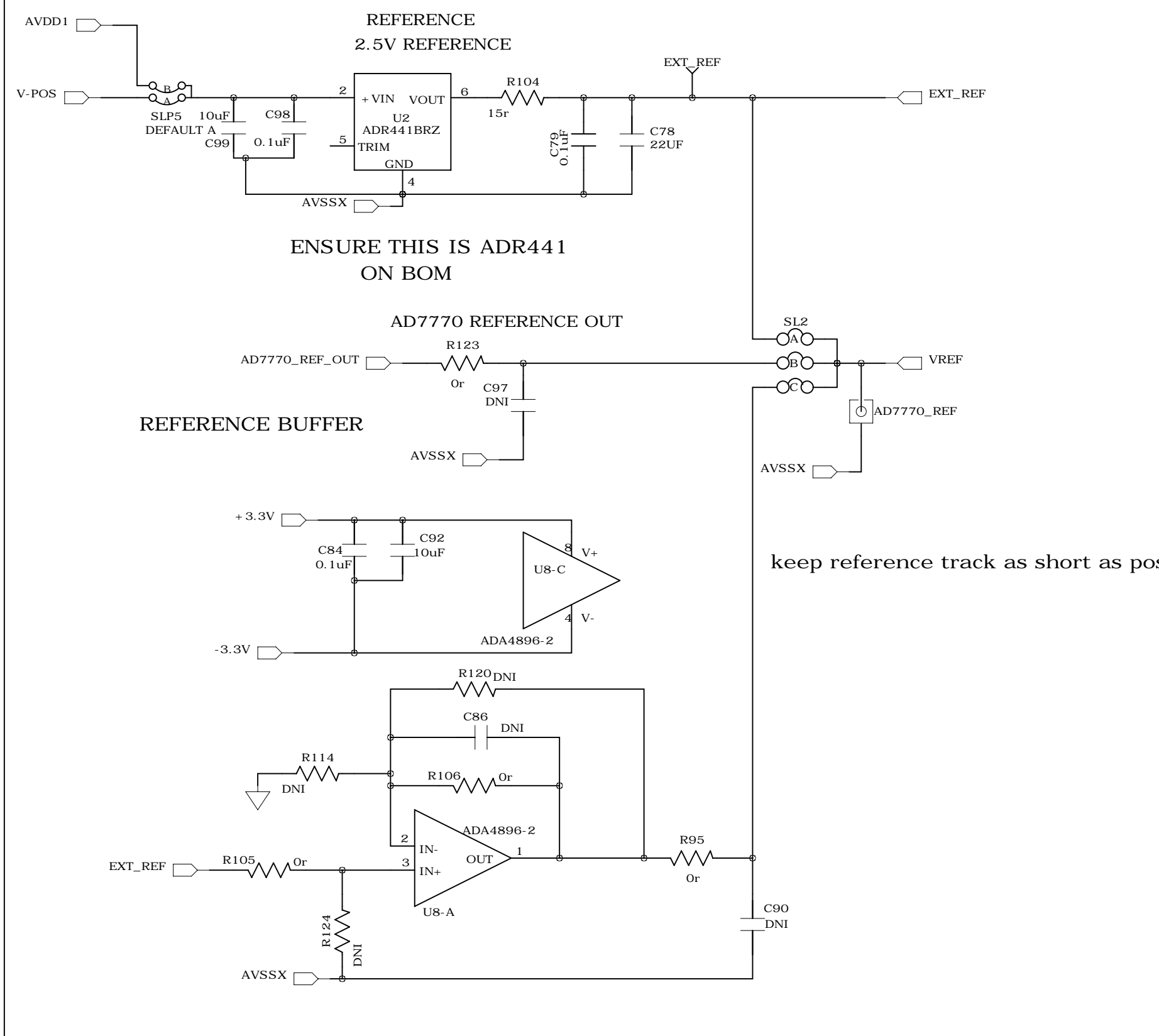


+/-3.3V RAIL FOR BUFFERS

COMPANY: ANALOG DEVICES			
TITLE: EVAL-AD7770FMCZ			
CODE:	SIZE: A2	DRAWING NO: 02-039442	REV: D
DRAWN: Pat Sheahan		DATED: June 2015	
CHECKED: Miguel Usach		DATED: June 2015	
QUALITY CONTROL: < QC By >		DATED: < QC Date >	
RELEASED: < Released By >		DATED: < Release Date >	
SCALE: < Scale >			SHEET: 5 OF 7

REVISION RECORD			
LTR	ECO NO:	APPROVED:	DATE:

Precision Voltage Reference



COMPANY:				ANALOG DEVICES			
TITLE:				EVAL-AD7770FMCZ			
DRAWN: Pat Sheahan	DATED: June 2015	CODE:	SIZE:	DRAWING NO:	REV:		
CHECKED: Miguel Usach	DATED: June 2015	A2		02-039442		D	
QUALITY CONTROL: < QC By >	DATED: < QC Date >						
RELEASED: < Released By >	DATED: < Release Date >						

6

5

4

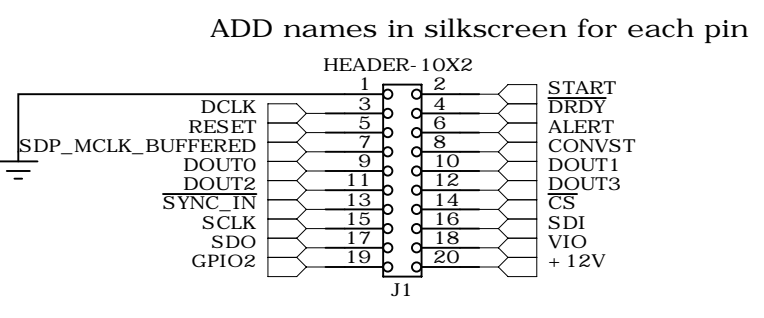
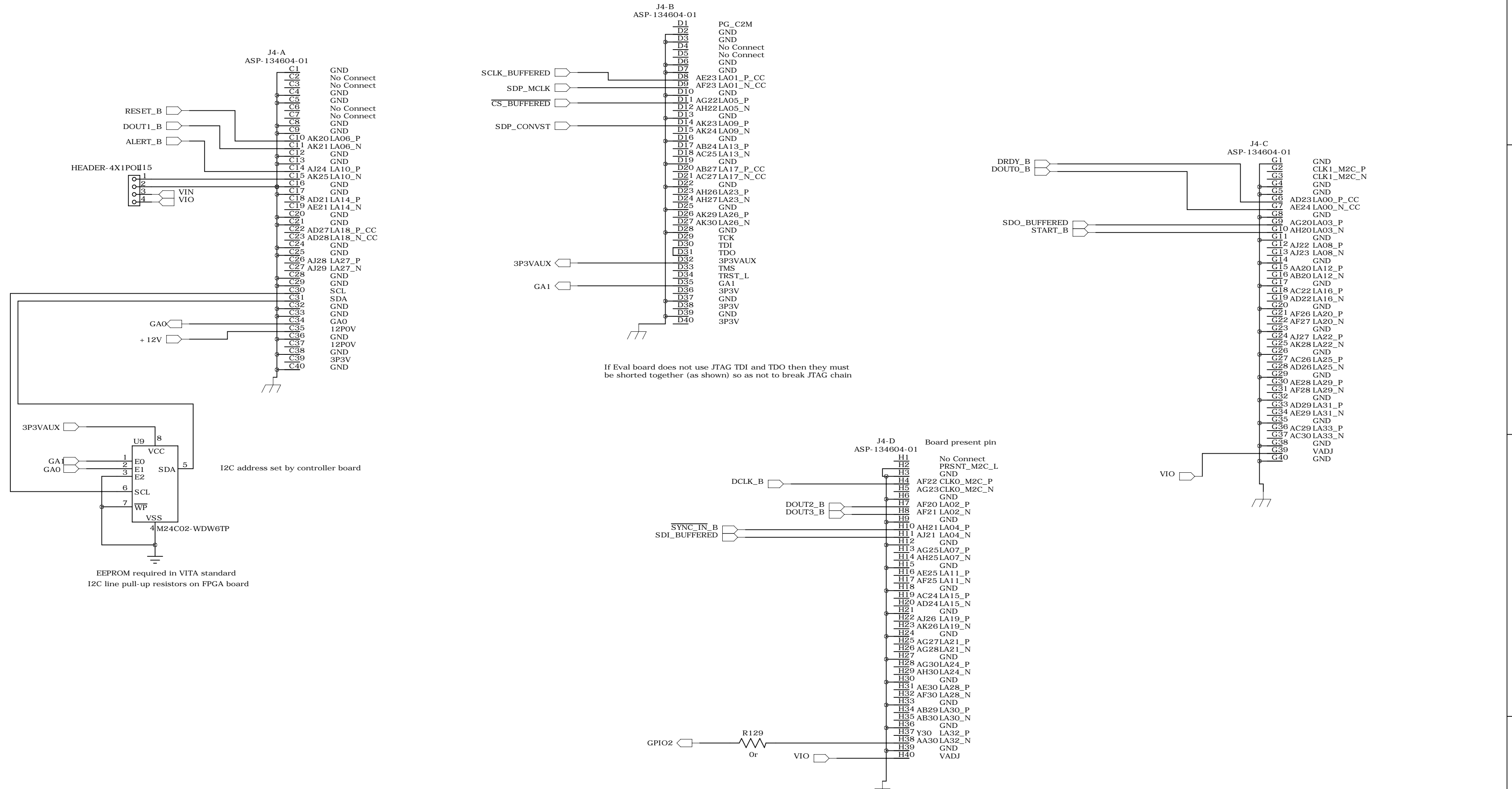
3

2

1

REVISION RECORD			
LTR	ECO NO:	APPROVED:	DATE:

FMC-LPC Connector



COMPANY:				ANALOG DEVICES			
TITLE:				EVAL-AD7770FMCZ			
DRAWN:	DATED:	CODE:	SIZE:	DRAWING NO:	REV:		
Pat Sheahan	June 2015		A2	02-039442	D		
CHECKED:	DATED:						
Miguel Usach	June 2015						
QUALITY CONTROL:	DATED:						
< QC By >	< QC Date >						
RELEASED:	DATED:						
< Released By >	< Release Date >						