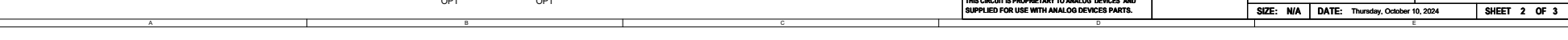
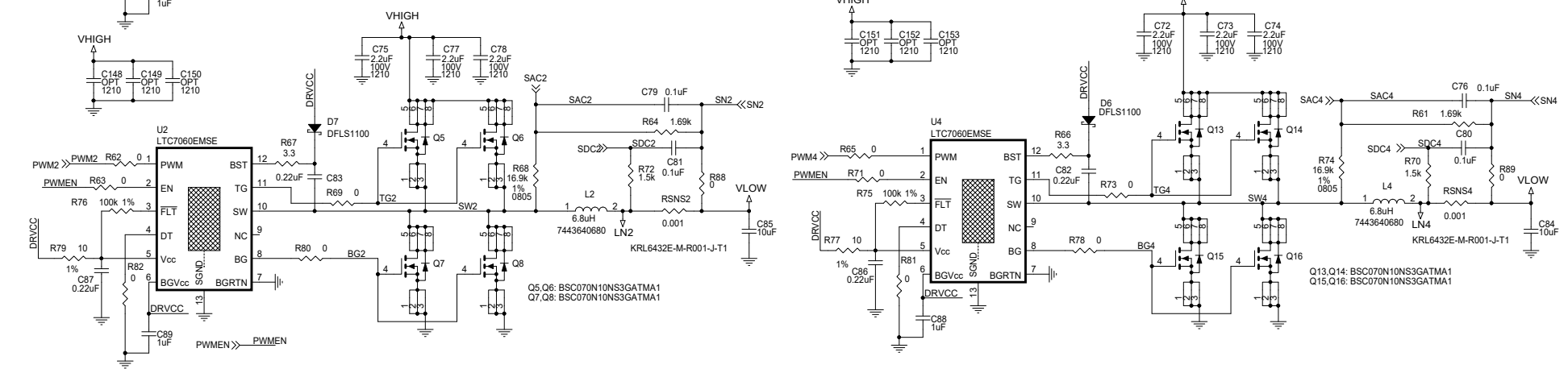
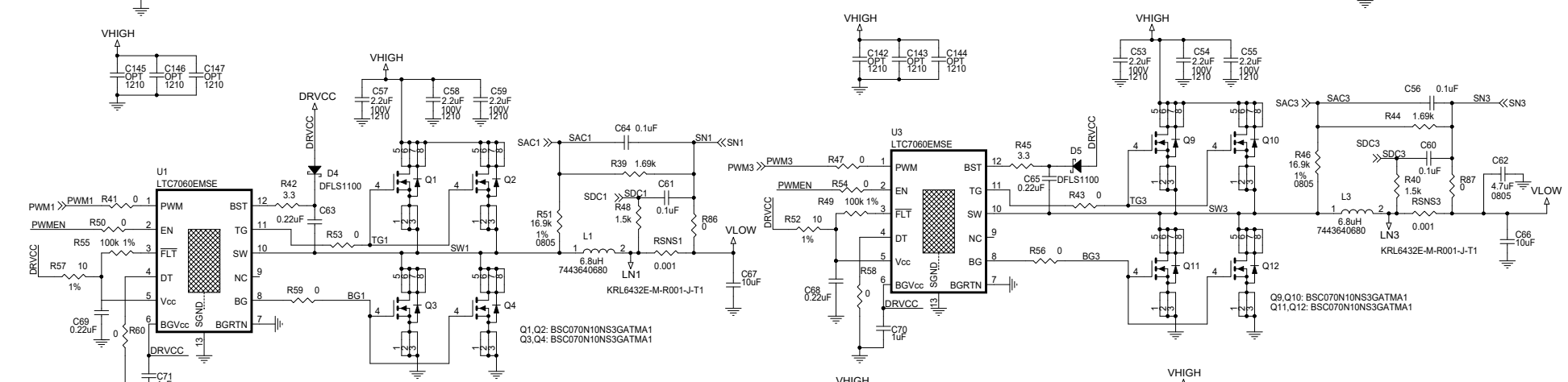
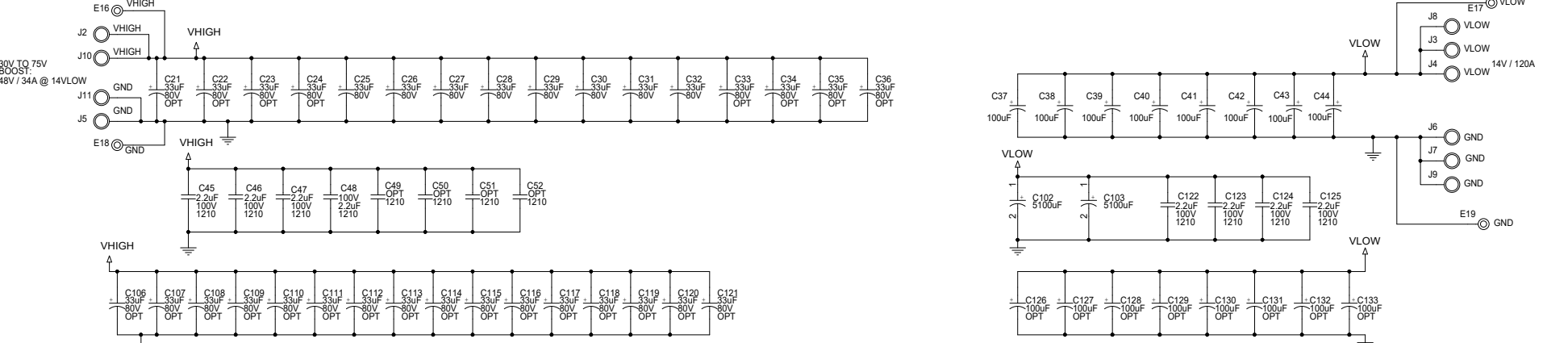
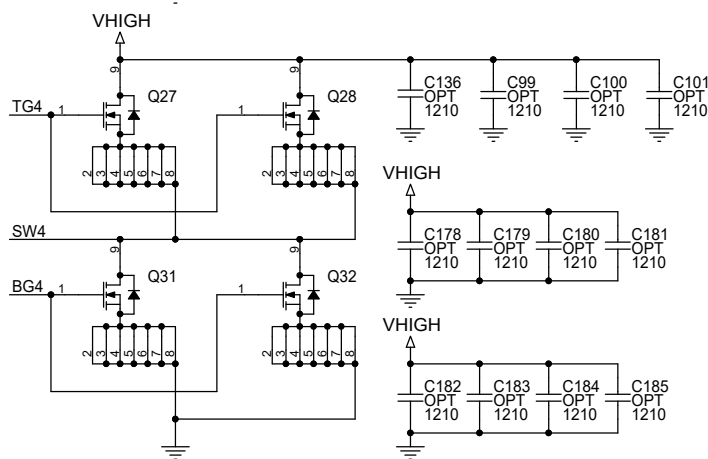
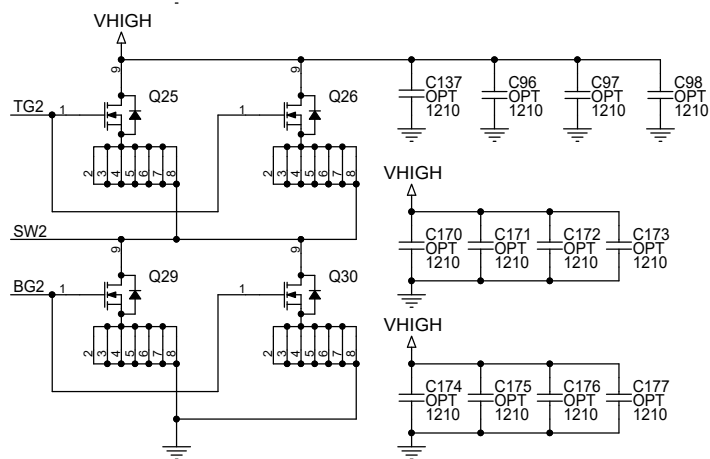
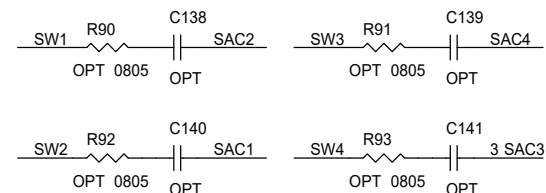
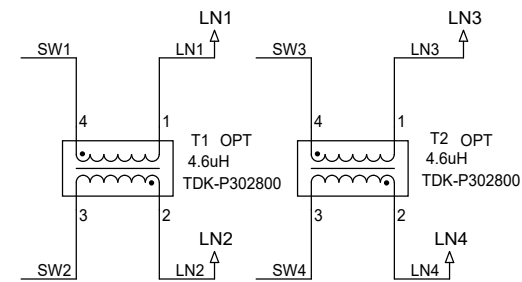
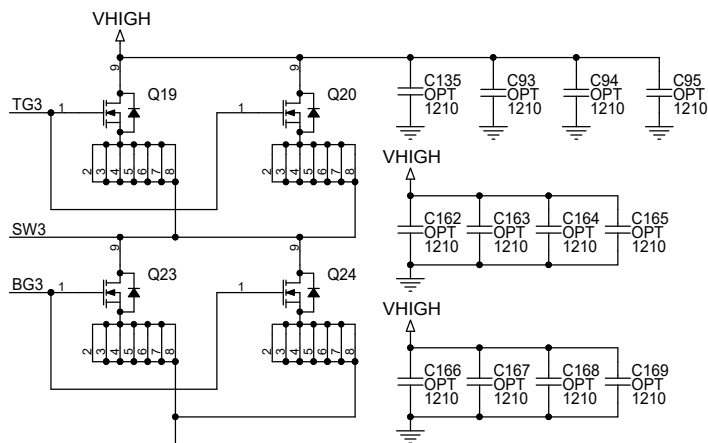
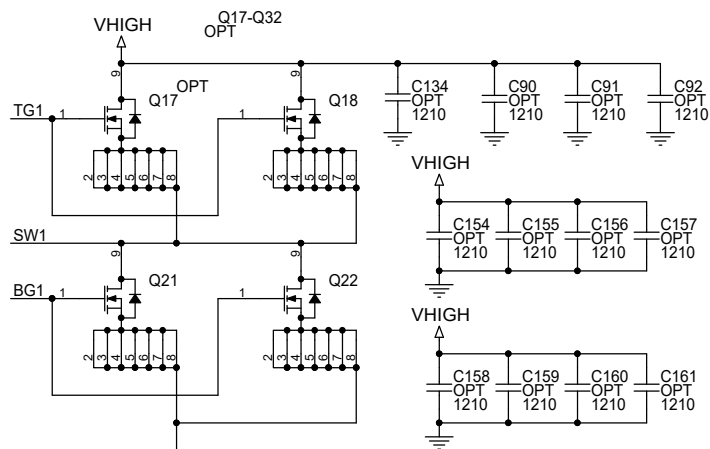


CUSTOMER NOTICE		APPROVALS		
<small>ANALOG DEVICES HAS MADE A BEST EFFORT TO DESIGN A CIRCUIT THAT MEETS CUSTOMER-SUPPLIED SPECIFICATIONS; HOWEVER, IT REMAINS THE CUSTOMER'S RESPONSIBILITY TO VERIFY PROPER AND RELIABLE OPERATION IN THE ACTUAL APPLICATION. COMPONENT SUBSTITUTION AND PRINTED CIRCUIT BOARD LAYOUT MAY SIGNIFICANTLY AFFECT CIRCUIT PERFORMANCE OR RELIABILITY. CONTACT ANALOG DEVICES APPLICATIONS ENGINEERING FOR ASSISTANCE.</small>				
<small>THIS CIRCUIT IS PROPRIETARY TO ANALOG DEVICES AND SUPPLIED FOR USE WITH ANALOG DEVICES PARTS.</small>		PCB DES. J W APP ENG. C R	TITLE: SCHEMATIC HIGH POWER POLY-PHASE BI-DIRECTIONAL SUPPLY/CHARGER IC NO. LTC7872 SKU NO. EVAL-LTC7872-AZ SIZ: N/A DATE: Thursday, October 10, 2024	
		SCHEMATIC NO. AND REVISION: EVAL-LTC7872-AZ REV02		SHEET 1 OF 3

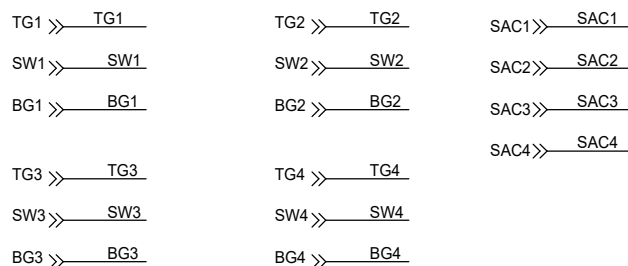


CUSTOMER NOTICE ANALOG DEVICES HAS MADE A BEST EFFORT TO DESIGN A CIRCUIT THAT MEETS CUSTOMER-SUPPLIED SPECIFICATIONS. HOWEVER, IT REMAINS THE CUSTOMER'S RESPONSIBILITY TO VERIFY PROPER AND RELIABLE OPERATION IN THE ACTUAL APPLICATION. COMPONENT SUBSTITUTION AND PRINTED CIRCUIT BOARD LAYOUT MAY SIGNIFICANTLY AFFECT CIRCUIT PERFORMANCE OR RELIABILITY. CONTACT ANALOG DEVICES APPLICATIONS ENGINEERING FOR ASSISTANCE.	APPROVALS PCB DES. J W APP ENG. C R	
	TITLE: SCHEMATIC HIGH POWER POLY-PHASE BI-DIRECTIONAL SUPPLY/CHARGER	
IC NO. LTC7872 SKU NO. EVAL-LTC7872-AZ		SCHEMATIC NO. AND REVISION: EVAL-LTC7872-AZ REV02
THIS CIRCUIT IS PROPRIETARY TO ANALOG DEVICES AND SUPPLIED FOR USE WITH ANALOG DEVICES PARTS.		SIZE: N/A DATE: Thursday, October 10, 2024 SHEET 2 OF 3



PCA ADDITIONAL PARTS

MP1	STANDOFF,NYLON,SNAP-ON,0.25" (6.4mm)
MP2	STANDOFF,NYLON,SNAP-ON,0.25" (6.4mm)
MP3	STANDOFF,NYLON,SNAP-ON,0.25" (6.4mm)
MP4	STANDOFF,NYLON,SNAP-ON,0.25" (6.4mm)
MP5	STANDOFF,NYLON,SNAP-ON,0.25" (6.4mm)
MP6	STANDOFF,NYLON,SNAP-ON,0.25" (6.4mm)
MP7	STANDOFF,NYLON,SNAP-ON,0.25" (6.4mm)
MP8	STANDOFF,NYLON,SNAP-ON,0.25" (6.4mm)
MP9	STANDOFF,NYLON,SNAP-ON,0.25" (6.4mm)
PCB1	PCB, EVAL-LTC7872-AZ REV02



CUSTOMER NOTICE

ANALOG DEVICES HAS MADE A BEST EFFORT TO DESIGN A CIRCUIT THAT MEETS CUSTOMER-SUPPLIED SPECIFICATIONS; HOWEVER, IT REMAINS THE CUSTOMER'S RESPONSIBILITY TO VERIFY PROPER AND RELIABLE OPERATION IN THE ACTUAL APPLICATION. COMPONENT SUBSTITUTION AND PRINTED CIRCUIT BOARD LAYOUT MAY SIGNIFICANTLY AFFECT CIRCUIT PERFORMANCE OR RELIABILITY. CONTACT ANALOG DEVICES APPLICATIONS ENGINEERING FOR ASSISTANCE.

THIS CIRCUIT IS PROPRIETARY TO ANALOG DEVICES AND SUPPLIED FOR USE WITH ANALOG DEVICES PARTS.

APPROVALS

PCB DES.	J W
APP ENG.	C R



TITLE: SCHEMATIC
HIGH POWER POLY-PHASE BI-DIRECTIONAL SUPPLY/CHARGER

IC NO. LTC7872 SKU NO. EVAL-LTC7872-AZ SCHEMATIC NO. AND REVISION: EVAL-LTC7872-AZ REV02

SIZE: N/A DATE: Thursday, October 10, 2024 SHEET 3 OF 3