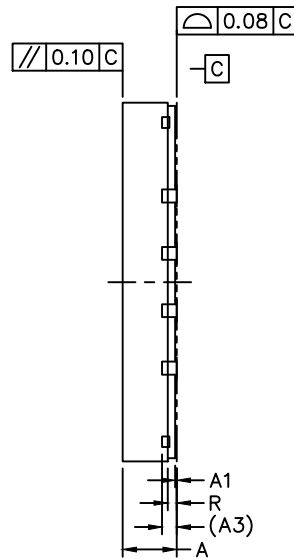
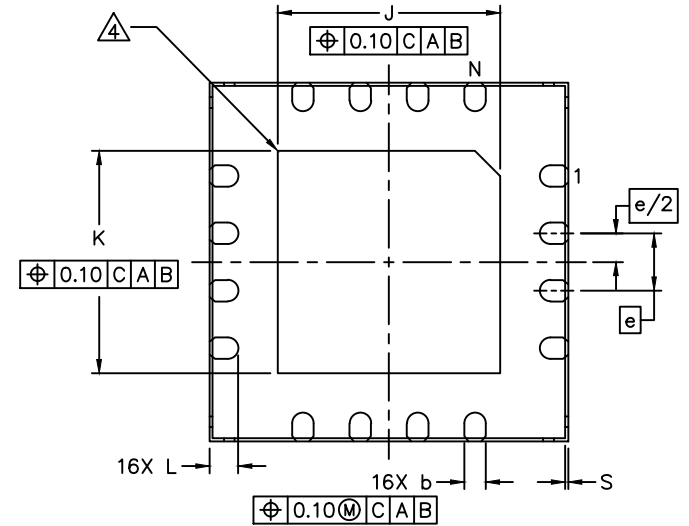


TOP VIEW



SIDE VIEW



BOTTOM VIEW

NOTES:

1. ALL DIMENSION AND TOLERANCE CONFORM TO ASME Y14.5M-1994.
2. ALL DIMENSION ARE IN MILLIMETERS UNLESS OTHERWISE SPECIFIED.
3. N IS THE TOTAL NUMBER OF TERMINALS.
4. BILATERAL COPLANARITY ZONE APPLIES TO THE EXPOSED PAD AS WELL AS THE TERMINALS.
5. ALL DIMENSION APPLY TO BOTH LEADED (-) AND PbFREE (+) PKG. CODES.
6. MARKING SHOWN IS FOR PACKAGE ORIENTATION REFERENCE ONLY.
7. CONTROLLING DIMENSION:mm.
8. PKG. CODE:T1655Y-3C.
9. MATERIAL MUST BE COMPLIANT WITH MAXIM SPECIFICATION 10-0131 FOR SUBSTANCE CONTENT,MUST BE Eu ROHS COMPLIANT WITHOUT EXEMPTION AND PB-FREE.

DIM	COMMON DIMENSIONS		
	MIN.	NOM.	MAX.
A	0.70	0.75	0.80
A1	0	0.02	0.05
A3	0.203 REF		
b	0.25	0.30	0.35
e	0.80 BSC		
D	5.00 BSC		
E	5.00 BSC		
J	3.00	3.10	3.20
K	3.00	3.10	3.20
L	0.30	0.40	0.50
R	0.075	-	0.175
S	0.01	-	0.075
N	16		

-DRAWING NOT TO SCALE-



TITLE:
PACKAGE OUTLINE, 16L, SWTQFN,
5X5X0.75mm

APPROVAL

DOCUMENT CONTROL NO.
21-100279

REV. 1/1
A