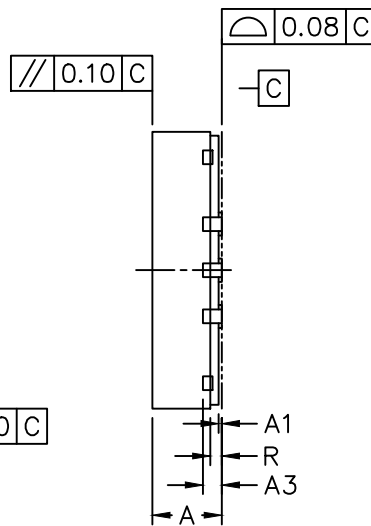
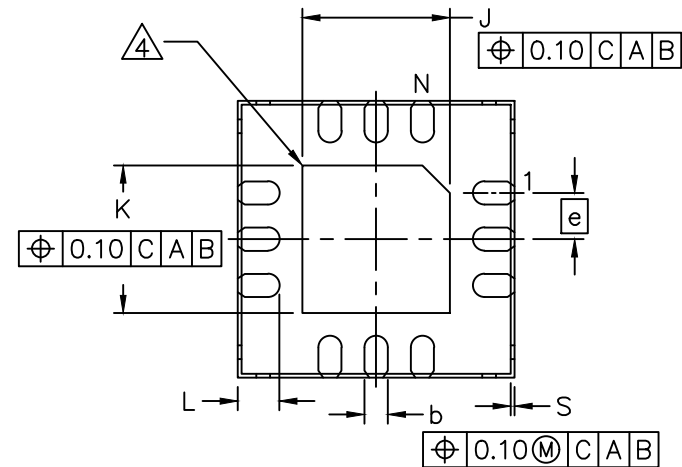


TOP VIEW



SIDE VIEW



BOTTOM VIEW

COMMON DIMENSIONS			
DIM	MIN.	NOM.	MAX.
A	0.70	0.75	0.80
A1	0	0.035	0.05
A3	0.203 REF		
b	0.20	0.25	0.30
e	0.50 BSC		
D	3.00 BSC		
E	3.00 BSC		
J	1.50	1.6	1.70
K	1.50	1.6	1.70
L	0.40	0.45	0.50
R	0.075	0.125	0.175
S	0.01	0.0425	0.075
N	12		

NOTES:

1. ALL DIMENSION AND TOLERANCE CONFORM TO ASME Y14.5M-1994.
2. ALL DIMENSION ARE IN MILLIMETERS UNLESS OTHERWISE SPECIFIED.
3. N IS THE TOTAL NUMBER OF TERMINALS.
4. BILATERAL COPLANARITY ZONE APPLIES TO THE EXPOSED PAD AS WELL AS THE TERMINALS.
5. ALL DIMENSION APPLY TO BOTH LEADED (-) AND PbFREE (+) PKG. CODES.
6. MARKING SHOWN IS FOR PACKAGE ORIENTATION REFERENCE ONLY.
7. CONTROLLING DIMENSION: mm.
8. MATERIAL MUST BE COMPLIANT WITH MAXIM SPECIFICATION 10-0131 FOR SUBSTANCE CONTENT, MUST BE Eu ROHS COMPLIANT WITHOUT EXEMPTION AND PB-FREE.
9. PKG. CODE: T1233Y-4, T1233Y-5, T1233Y-5C.

-DRAWING NOT TO SCALE-

TITLE: PACKAGE OUTLINE, 12L, TQFN 3X3X0.75mm, SIDE-WETTABLE		
APPROVAL KAI LIU	DOCUMENT CONTROL NO. 21-100171	REV. 1/1 C