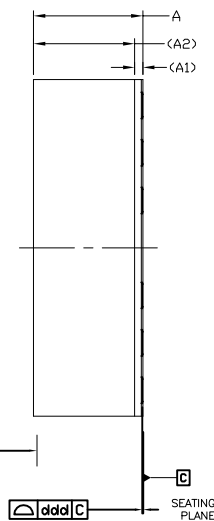
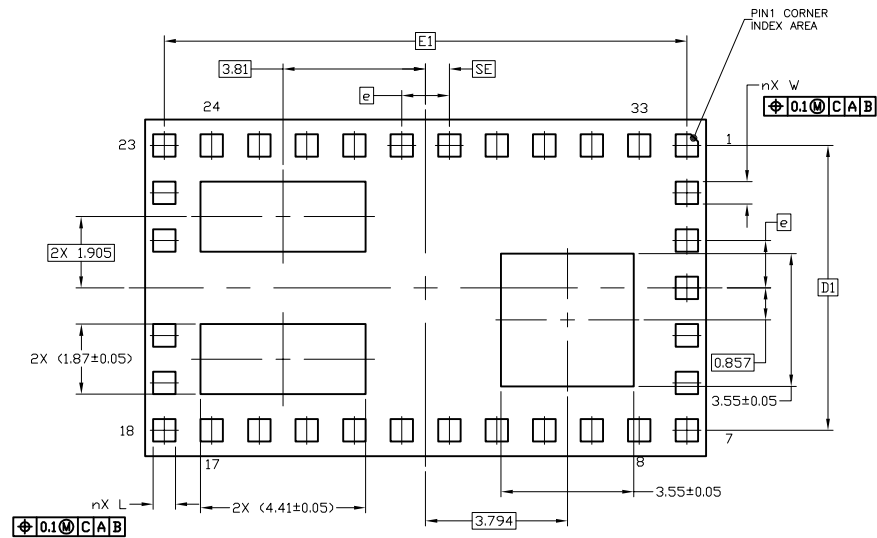


TOP VIEW



SIDE VIEW



BOTTOM VIEW

COMMON DIMENSIONS			
DIM	MIN.	NOM.	MAX.
A	---	---	2.92
A1	---	---	0.22
A2		2.7	REF
D		9	BSC
E		15	BSC
W	0.55	0.6	0.65
L	0.55	0.6	0.65
e		1.27	BSC
n		33	
D1		7.62	BSC
E1		13.97	BSC
SD		---	BSC
SE		0.635	BSC
aaa		0.1	
bbb		0.1	
ddd		0.1	

NOTES:

1. ALL DIMENSIONS ARE IN MILLIMETERS. ANGLES ARE IN DEGREES.
2. DIMENSIONING AND TOLERANCING CONFORM TO ASME Y14.5M -2009
3. N IS THE TOTAL NUMBER OF TERMINALS.
4. PIN #1 ID ON TOP WILL BE LASER MARKED.
5. MATERIAL MUST BE COMPLIANT WITH MAXIM SPECIFICATION 10-0131 FOR SUBSTANCE CONTENT, MUST BE Eu ROHS COMPLIANT WITHOUT EXEMPTION AND Pb-FREE.
6. ALL DIMENSIONS APPLY TO PbFREE (+) PARTS.
7. PACKAGE CODES: L33915+3



TITLE:
PACKAGE OUTLINE 33L SIP LGA
15x9x2.92mm

APPROVAL	DOCUMENT CONTROL NO. 21-100175	REV. A	1/1
----------	-----------------------------------	-----------	-----