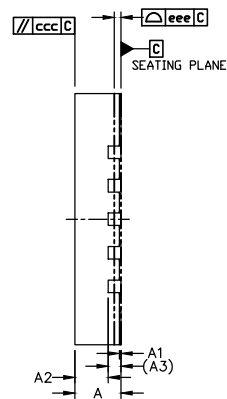
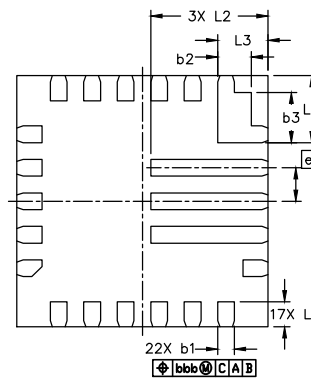


TOP VIEW



SIDE VIEW



BOTTOM VIEW

	SYMBOL	MIN	NOM	MAX
TOTAL THICKNESS	A	0.5	0.55	0.6
STAND OFF	A1	0	0.02	0.05
MOLD THICKNESS	A2	---	0.4	---
L/F THICKNESS	A3	0.152 REF		
LEAD WIDTH	b1	0.15	0.2	0.25
	b2	0.35	0.4	0.45
	b3	0.55	0.6	0.65
BODY SIZE	X	D	2.9	3.0
	Y	E	2.9	3.0
LEAD PITCH	e	0.4 BSC		
LEAD LENGTH	L1	0.2	0.3	0.4
	L2	1.3	1.4	1.5
	L3	0.5	0.6	0.7
	L4	0.7	0.8	0.9
PACKAGE EDGE TOLERANCE	aaa	0.1		
MOLD FLATNESS	ccc	0.1		
COPLANARITY	eee	0.08		
LEAD OFFSET	bbb	0.1		
EXPOSED PAD OFFSET	fff	0.1		

NOTES:

1. REFER TO JEDEC MO-220;
2. COPLANARITY APPLIES TO LEADS, CORNER LEADS AND DIE ATTACH PAD;
3. BAN TO USE THE LEVEL 1 ENVIRONMENT-RELATED SUBSTANCES PER JCET SPECS.
4. FINISH: Cu/EP • Sn8~20s
5. MAXIM PKG CODE : F223A3F+1
6. MATERIAL MUST BE COMPLIANT WITH MAXIM SPECIFICATION 10-0131 FOR SUBSTANCE CONTENT, MUST BE Eu ROHS COMPLIANT WITHOUT EXEMPTION AND PB-FREE.

-DRAWING NOT TO SCALE-



TITLE:
PACKAGE OUTLINE, 22L FC2QFN
3x3x0.55mm

APPROVAL
TONY LIN

DOCUMENT CONTROL NO.
21-100223

REV. B 1/1