
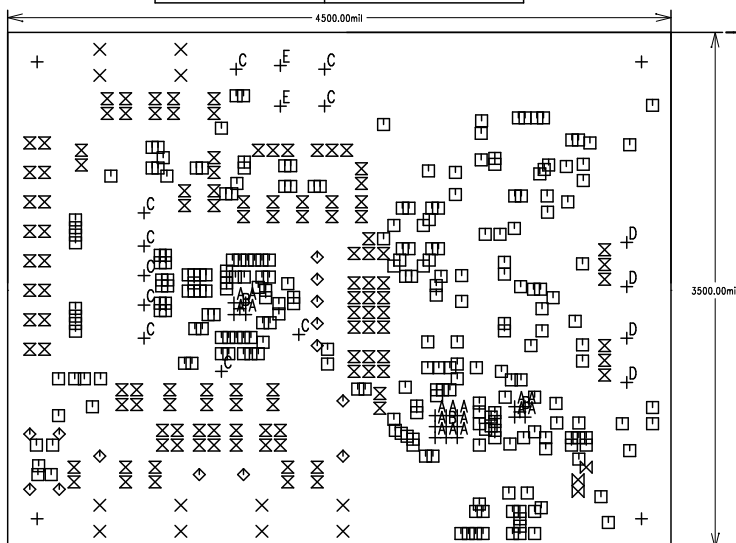


MAX98090 TQFN EVALUATION KIT	
P/N: EPCB98090TQFN	REV A
	
LAYER DRILL & MECHANICALS	
DATE:	ALL UNITS ARE IN 0.001"



SIZE	QTY	SYM	PLATED	TOL
125	4	+	YES	+/-3
100	12	X	YES	+/-3
15	255	□	YES	+/-3
40	14	◇	YES	+/-3
37	118	⊗	YES	+/-3
25	3	⊗	YES	+/-3
20	16	+ ^A	YES	+/-3
35	3	+ ^B	YES	+/-3
67	10	+ ^C	YES	+/-3
130	4	+ ^D	YES	+/-3
67	2	+ ^E	NO	+/-3

NOTES: UNLESS OTHERWISE SPECIFIED

- FABRICATE USING PROVIDED GERBER FILES PER LATEST REVISION OF IPC-A-600 UNLESS OTHERWISE NOTED.
- MATERIAL: RoHS COMPLIANT FR-408 OR SIMILAR LAMINATE MATERIAL WITH $T_g \geq 170$ AND COMPATIBLE WITH LEAD-FREE SOLDERING PROCESS.
- BOARD DIMENSIONS: 4.50"X3.50" +/- 0.010".
BOARD THICKNESS: 0.062"
- LAYERS: 6.
- MINIMUM TRACE/SPACING: 8MILS/7.5MILS.
- COPPER CLAD FINISH: 1oz ON ALL LAYERS.
- SURFACE MOUNT PADS: 661.
- SOLDERMASK: GREEN LPI SMOBC.
- LEGENDS: WHITE, SINGLE-SIDED, NON-CONDUCTIVE EPOXY INK OR EQUIVALENT. CLIPPED ALL LEGENDS FROM EXPOSED METAL.
- PLATING: MUST BE LEAD FREE AND RoHS COMPLIANT.
- FINISH: VENDOR SHOULD USE THE MOST ECONOMICAL LEAD FREE AND RoHS COMPLIANT PROCESS AVAILABLE OR AS SPECIFIED IN PURCHASE ORDER.
APPROVED FINISH:
HASL LEAD-FREE
IMMERSION TIN
IMMERSION GOLD
- VENDOR LOGO & DATE CODE: ALLOWED IN INK ON BOTTOM SIDE ONLY.
- THRU HOLES: 0.001" MIN.
- TOLERANCES:
PLATED-THRU HOLES: +/-0.003"
PATTERN-TO-PATTERN: +/-0.005"
LEGEND TO LEGEND: +/-0.007"
SOLDERMASK TO PATTERN: +/-0.005"

LAYER 1 TOP	1.4MIL
PRE-PREG AS NEEDED $E_r=3.8$	
LAYER 2 GND	1.4MIL
PRE-PREG AS NEEDED $E_r=3.8$	
LAYER 3 SIGNAL\GND	1.4MIL
CORE AS NEEDED $E_r=3.8$	
LAYER 4 VCC\GND	1.4MIL
PRE-PREG AS NEEDED $E_r=3.8$	
LAYER 5 GND	1.4MIL
PRE-PREG AS NEEDED $E_r=3.8$	
LAYER 6 BOTTOM	1.4MIL

ALL DIMENSION IN MIL (0.001 INCH) UNLESS OTHERWISE SPECIFIED.