


REVISIONS			
REV	DESCRIPTION	DATE	APPROVED
A	INITIAL RELEASE	09 JAN23	X
B	ECR-114289	20 JUL24	X
C	ECR-122018	07 AUG24	X

HOLE TOLERANCE  
UNLESS SPECIFIED  
PLATED: +/- .003  
NON PLATED: +/- .002

DRILL CHART: TOP to BOTTOM				
ALL UNITS ARE IN MILS				
FIGURE	SIZE	PLATED	QTY	TOLERANCE/NOTES
+	6.0	PLATED	23	
□	10.0	PLATED	394	
⊗	35.0	PLATED	6	
⊗	70.0	PLATED	4	
⊙	100.0	PLATED	4	
◇	172.0	PLATED	4	
△	187.0	NON-PLATED	4	

PRIMARY SIDE								
UNLESS OTHERWISE SPECIFIED DIMENSIONS ARE IN INCHES TOLERANCES DECIMALS   FRACTIONS   ANGLES .XX   -.010   --1/32   -- 2 .XXX   -.005 .XXXX   -.0050			APPROVAL		DATE		<div><div></div><div>ANALOG DEVICES</div></div> <div>WWM DIVISION 804 WOBURN STREET WILMINGTON, MA 01887</div>	
			TEMPLATE ENGINEER		ddMMMyy			
			HARDWARE SERVICES		ddMMMyy			
			HARDWARE SYSTEMS		ddMMMyy			
MATERIAL			TEST ENGINEER		ddMMMyy		TITLE FABRICATION MAX17617EVKIT#	
			COMPONENT ENGINEER		ddMMMyy			
			TEST PROCESS		ddMMMyy			
			HARDWARE RELEASE		ddMMMyy			
FINISH			DESIGNER		ddMMMyy		SIZE   FSCM NO   DRAWING NUMBER   REV C   24355   09-073561   B	
			PTD ENGINEER		ddMMMyy			
			CHECKER		ddMMMyy			
DO NOT SCALE DWG							SCALE   1 / 1   SHEET   1 OF 2	

MATERIALS, ALL LAMINATES AND BONDING MATERIALS SHOULD BE SELECTED FROM IPC-4101 OR IPC-4103. MINIMUM Tg>170degC, Td>300degC, U.L. RATING OF 94 V-0

MATERIAL FAMILY, ISOLA 370HR OR S1000-2 OR IT180 OR EQUIVALENT

CLADDING, EXTERNAL LAYERS 1 OZ. COPPER  
INTERNAL LAYERS 1 OZ. COPPER.

NOTE: IF THE LAYER STACKUP CONFLICTS WITH THE ABOVE CLADDING SPECIFICATIONS THEN THE LAYER STACKUP SHALL TAKE PRECEDENCE.

SOLDER MASK, SHALL BE LIQUID PHOTOIMAGEABLE (LPI) APPLIED ON BOTH SIDES OVER BARE COPPER OR GOLD AND SHALL MEET IPC-SM-840 (LATEST REV.) CLASS 3. COLOR BLUE

SILK SCREEN, SHALL BE PERMANENT NON-CONDUCTIVE EPOXY INK, COLOR: WHITE  
SYNTHETIC INKJET PRINTING ALLOWED FOR DENSE BOARDS,  
COLOR: WHITE

SURFACE FINISH, ENIG (Electroless Nickel/Immersion Gold)  
PER IPC-4552 LATEST REVISION

INTENTIONAL SHORTS, IF SUPPLIED DATA INCLUDES A FILE "READ\_ME.2", THEN INTENTIONAL NET SHORTS EXIST. CUSTOMER REVIEW AND APPROVAL IS REQUIRED IF SUPPLIED DATA REPORTS ANY CONDITION THAT DOES NOT MATCH "READ\_ME.2" FILE PROVIDED.


TEST REQUIREMENTS, 100% NETLIST ELECTRICAL VERIFICATION USING CUSTOMER SUPPLIED IPC-D-356 NETLIST FOR OPENS AND SHORTS WHEN "GERBER DATA" IS PROVIDED. THIS VERIFICATION ALSO REQUIRED FOR "ODB++" DATA PER EMBEDDED NETLIST.

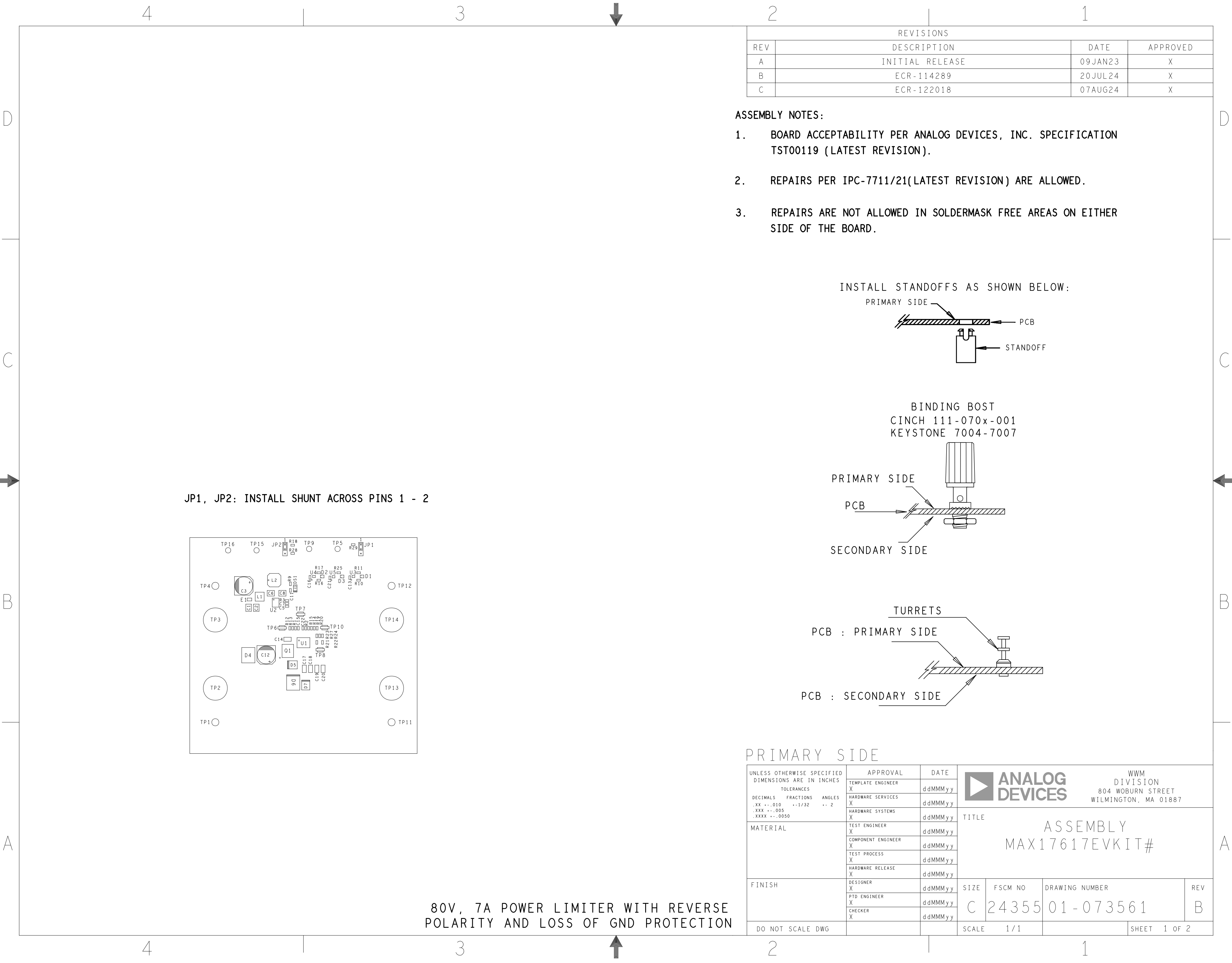
1. REFER TO IPC-6010 SERIES (LATEST REV.), CLASS 2 FOR FABRICATION UNLESS OTHERWISE SPECIFIED.
2. ACCEPTABILITY PER ANALOG DEVICES, INC. SPECIFICATION TST00115, (LATEST REVISION.)
3. MODIFICATIONS TO THE ARTWORK ARE NOT ALLOWED WITHOUT WRITTEN AUTHORIZATION.
4. HOLE PATTERN TOLERANCES FOR UNDIMENSIONED HOLES SHALL BE A DIAMETER OF 0.005 INCHES FROM THEIR TRUE POSITION.
5. PLATED HOLE WALL THICKNESS SHALL NOT BE LESS THAN 0.001 INCH MINIMUM AVERAGE, WITH NO READING LESS THAN .0008 BY CROSS SECTION.
6. HOLE DIAMETERS APPLY AFTER PLATING.
7. FINISHED CONDUCTOR WIDTHS SHALL NOT BE REDUCED FROM THE NOMINAL INDICATED ON THE MASTER PATTERN, BY MORE THAN THE CONDUCTOR THICKNESS.
8. MINIMUM DESIGN LINE WIDTH IS .XXX INCH.
9. MINIMUM DESIGN SPACING IS .XXX INCH.
10. NON-FUNCTIONAL PAD REMOVAL FROM INNER SIGNAL LAYERS MAY BE PERFORMED AFTER CUSTOMER APPROVAL.
11. IF PAD SIZES PROVIDED ARE NOT LARGE ENOUGH TO MAINTAIN ANNULAR RING REQUIREMENT, MFRG. MAY REQUEST APPROVAL TO TEAR DROP PADS TO MAINTAIN ANNULAR RING. (AT PAD TO TRACE INTERSECTION ONLY AND ELECTRICAL INTEGRITY MUST BE MAINTAINED.)
12. THIEVING MAY BE ADDED TO COMPENSATE FOR LOW COPPER DENSITY AREAS ON THIS DESIGN ONLY AFTER REVIEW AND APPROVAL FROM THE CUSTOMER:
  - A. THIEVING TO CARD EDGE, FIDUCIALS, NON-PLATED THROUGH HOLES, ALL OTHER FEATURES TO BE 0.200 INCH MINIMUM.
  - B. THERE SHALL BE NO THIEVING IN ANY AREAS FREE OF SOLDER MASK OR INTERNAL COPPER PLANES.
13. MFRG. TO LEGIBLY ETCH OR STAMP/SCREEN WITH PERMANENT NON-CONDUCTIVE INK ON SECONDARY SIDE IN A CLEAR AREA UNLESS OTHERWISE INDICATED;
  - A. U.L. CODE-FLAMMABILITY RATING
  - D. MFRG LOGO
  - B. DATE CODE (STAMP).
  - E. SUCCESSFUL ELECTRICAL TEST.
  - C. LOT NUMBER
14. REPAIRS PER IPC-7711/21 (LATEST REV.) ARE ALLOWED. REPAIRS ARE NOT ALLOWED IN ANY AREA DEFINED ON GOLD\_PRM AND/OR GOLD\_SEC ARTWORK LAYERS WHEN PROVIDED IN GERBER OR ODB++ DATA.

Diagram illustrating the cross-section of a 6-layer PCB structure. The layers are labeled from top to bottom:

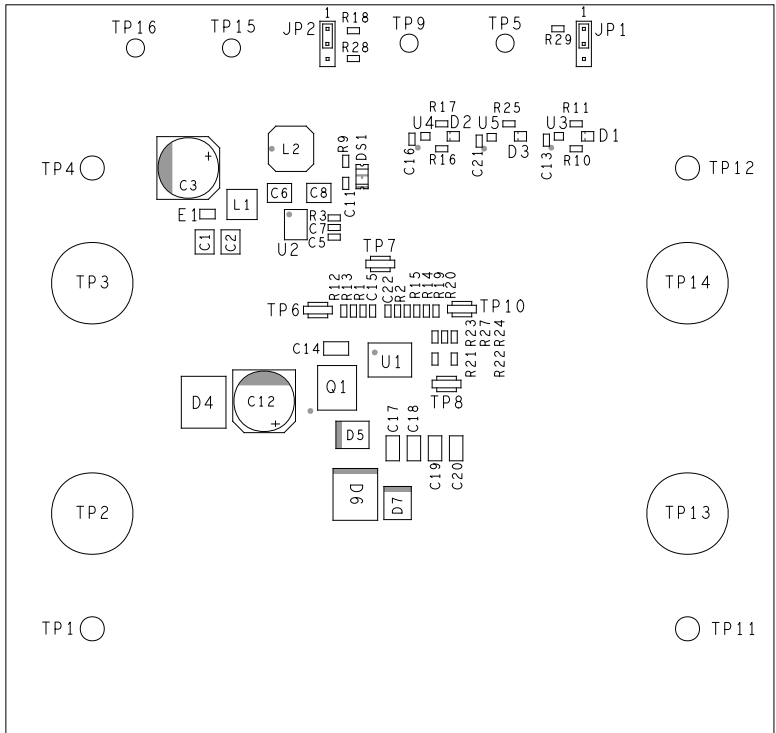
- PRIMARY SILKSCREEN
- PRIMARY SOLDER MASK
- PRIMARY SIDE (LAYER 1)
- LAYER 2 (Thickness:  $\sim 3.9$  MIL)
- LAYER 3 (Thickness:  $\sim 3.9$  MIL)
- SECONDARY SIDE (LAYER 4)
- SECONDARY SOLDER MASK
- SECONDARY SILKSCREEN

The nominal finished thickness is specified as  $0.062" \pm 10\%$ .

 <b>ANALOG DEVICES</b>		<b>WWM DIVISION</b> 804 WOBURN STREET WILMINGTON, MA 01887	
SIZE	FSCM NO	DRAWING NUMBER	REV
C	24355	09-073561	B
SCALE	1/1		SHEET 2 OF 2



JP1, JP2: INSTALL SHUNT ACROSS PINS 1 - 2

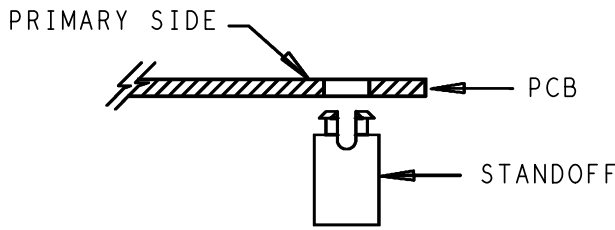


80V, 7A POWER LIMITER WITH REVERSE  
POLARITY AND LOSS OF GND PROTECTION

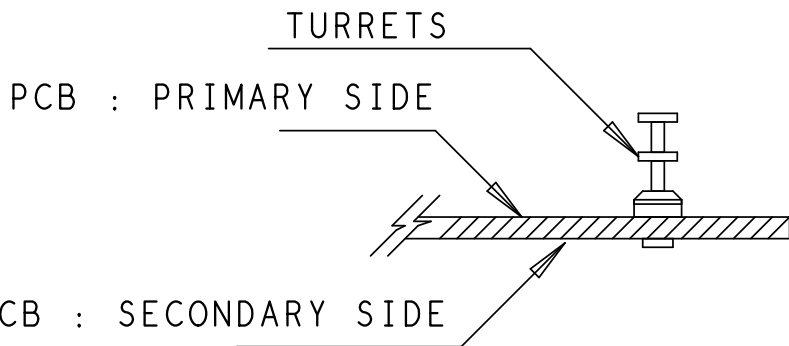
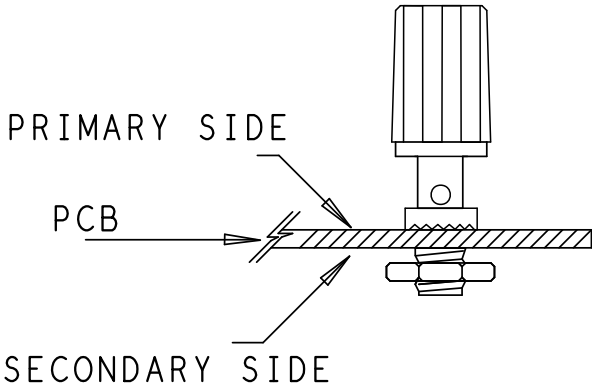
REVISIONS			
REV	DESCRIPTION	DATE	APPROVED
A	INITIAL RELEASE	09JAN23	X
B	ECR-114289	20JUL24	X
C	ECR-122018	07AUG24	X

- ASSEMBLY NOTES:
- BOARD ACCEPTABILITY PER ANALOG DEVICES, INC. SPECIFICATION TST00119 (LATEST REVISION).
  - REPAIRS PER IPC-7711/21(LATEST REVISION) ARE ALLOWED.
  - REPAIRS ARE NOT ALLOWED IN SOLDERMASK FREE AREAS ON EITHER SIDE OF THE BOARD.

INSTALL STANDOFFS AS SHOWN BELOW:

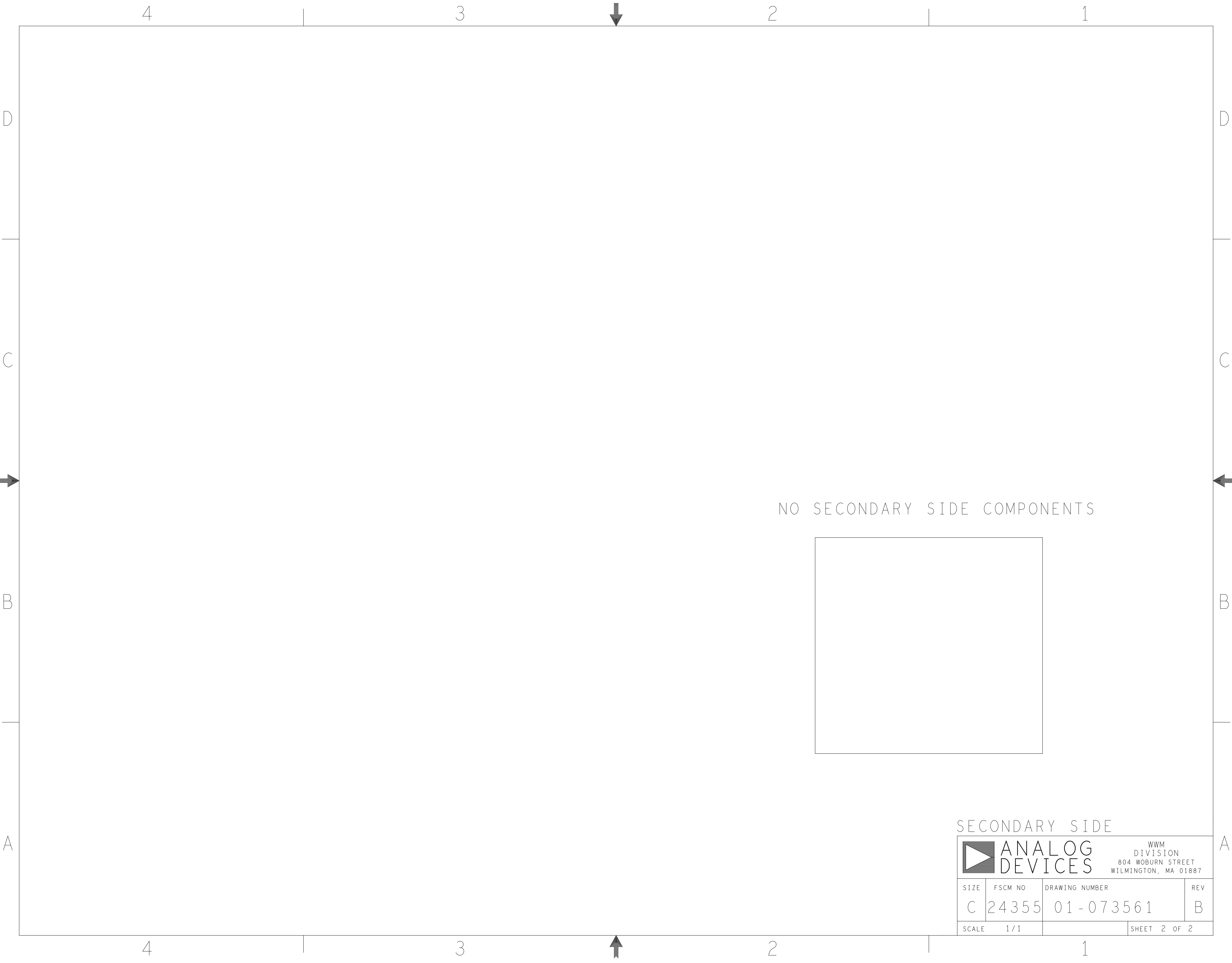


BINDING BOST  
CINCH 111-070x-001  
KEYSTONE 7004-7007



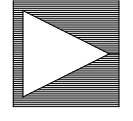
PRIMARY SIDE			
UNLESS OTHERWISE SPECIFIED DIMENSIONS ARE IN INCHES TOLERANCES DECIMALS FRACTIONS ANGLES .XX -.010 --1/32 -- 2 .XXX -.005 .XXXX -.0050	APPROVAL	DATE	TITLE ASSEMBLY MAX17617EVKIT#
	TEMPLATE ENGINEER X	ddMMMyy	
	HARDWARE SERVICES X	ddMMMyy	
	HARDWARE SYSTEMS X	ddMMMyy	
MATERIAL	TEST ENGINEER X	ddMMMyy	SIZE FSCM NO DRAWING NUMBER REV C 24355 01-073561 B
	COMPONENT ENGINEER X	ddMMMyy	
	TEST PROCESS X	ddMMMyy	
	HARDWARE RELEASE X	ddMMMyy	
FINISH	DESIGNER X	ddMMMyy	SCALE 1/1 SHEET 1 OF 2
	PTD ENGINEER X	ddMMMyy	
	CHECKER X	ddMMMyy	
	DO NOT SCALE DWG		

ANALOG DEVICES  
WWM DIVISION  
804 WOBURN STREET  
WILMINGTON, MA 01887

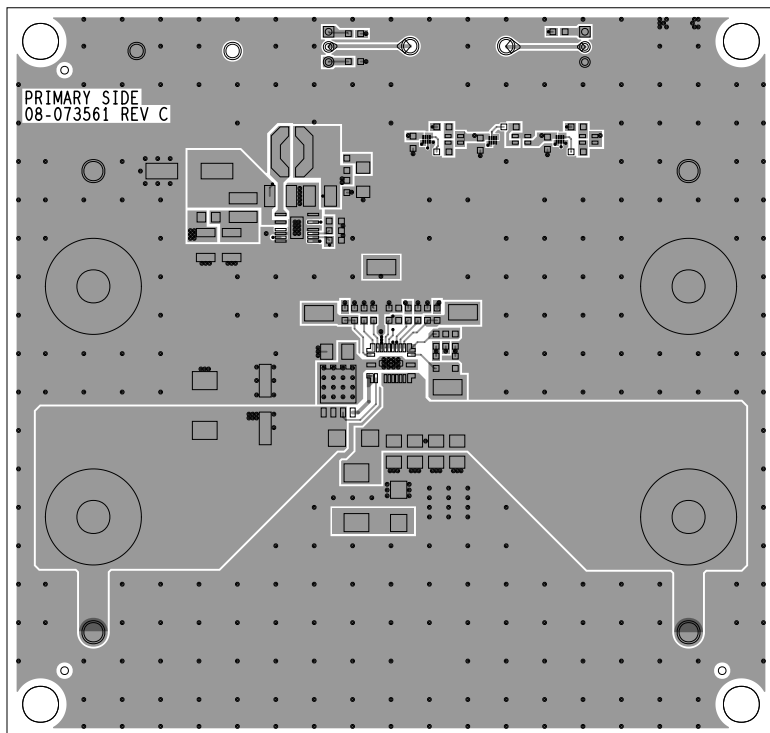


NO SECONDARY SIDE COMPONENTS

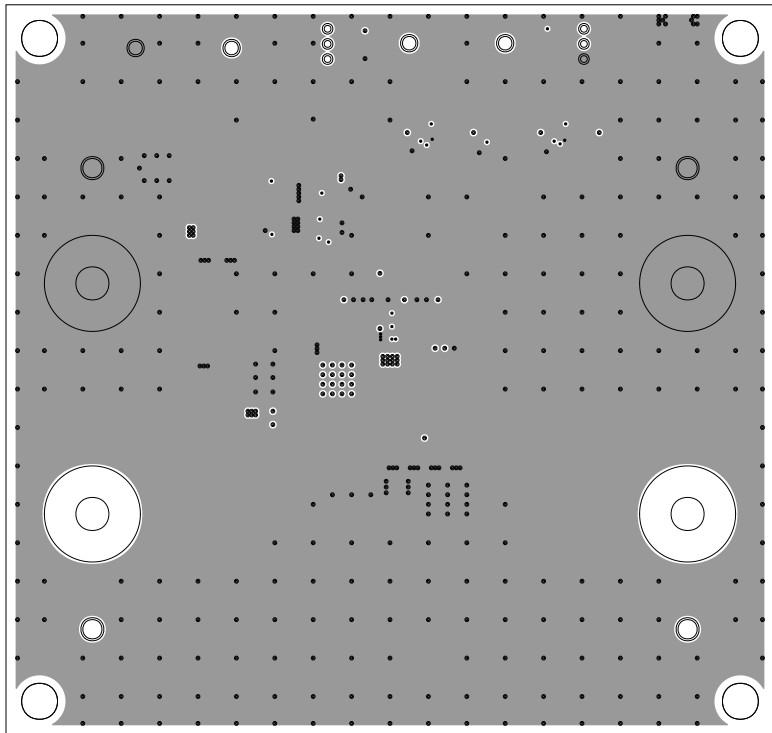
SECONDARY SIDE

 <b>ANALOG DEVICES</b>				WWM DIVISION 804 WOBURN STREET WILMINGTON, MA 01887	
SIZE	FSCM NO	DRAWING NUMBER	REV		
C	24355	01-073561	B		
SCALE	1 / 1			SHEET 2 OF 2	

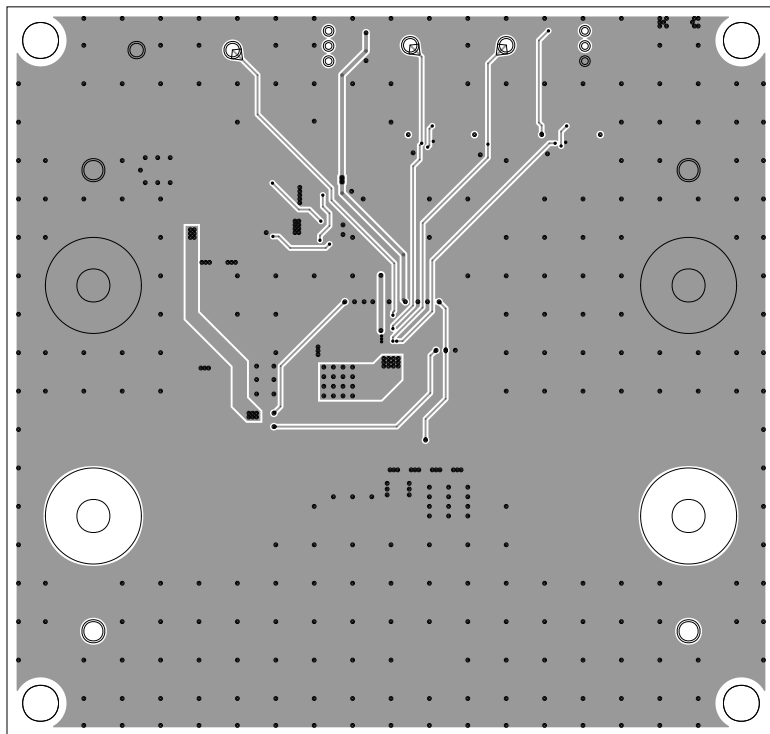
L1 PRIMARY  
08-073561-01  
REV C



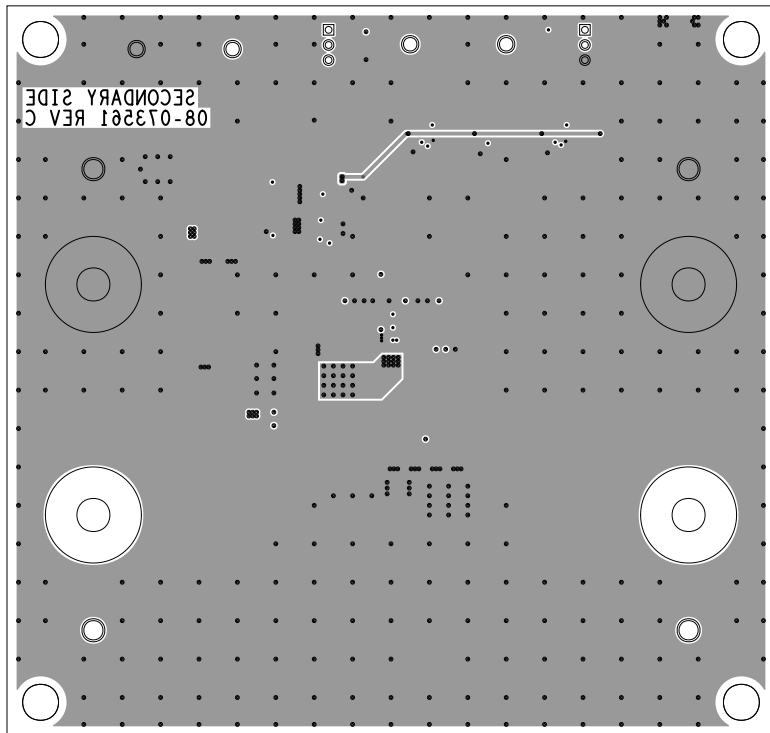
L2 GND/SIGNAL  
08-073561-07  
REV C



L3 GND/SIGNAL  
08-073561-08  
REV C

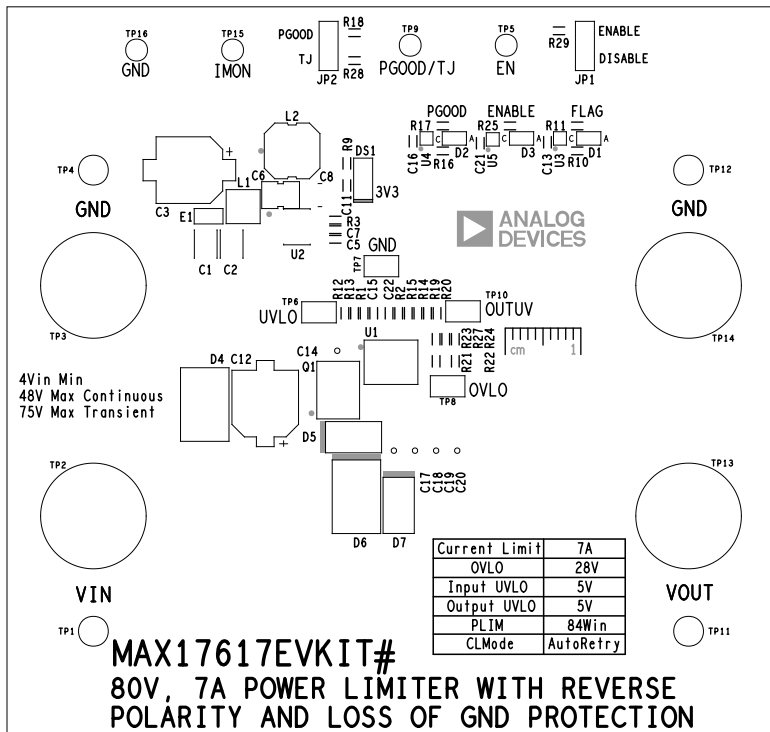


L4 SECONDARY  
08-073561-02  
REV C





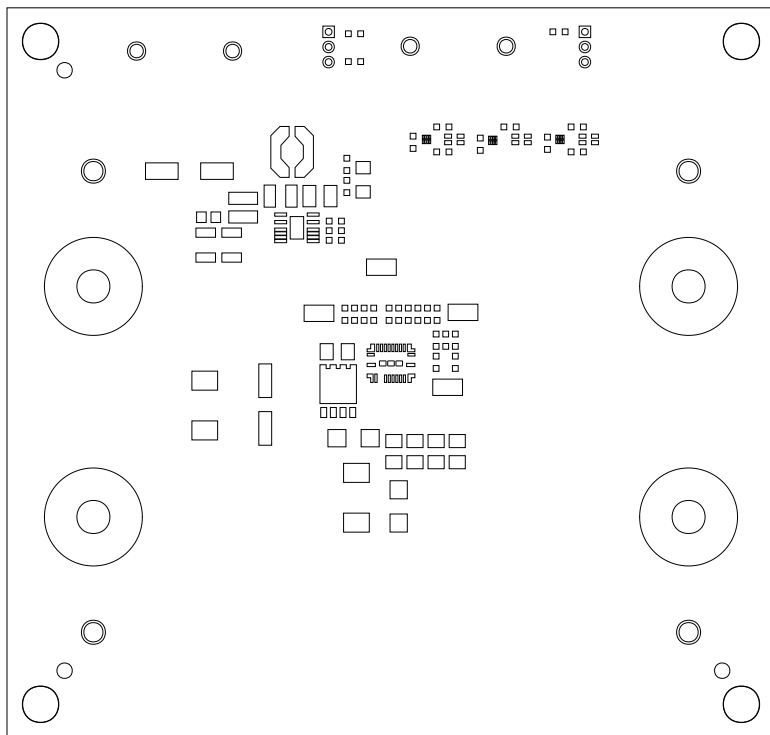
SILKSCREEN PRIMARY  
08-073561-03  
REV C



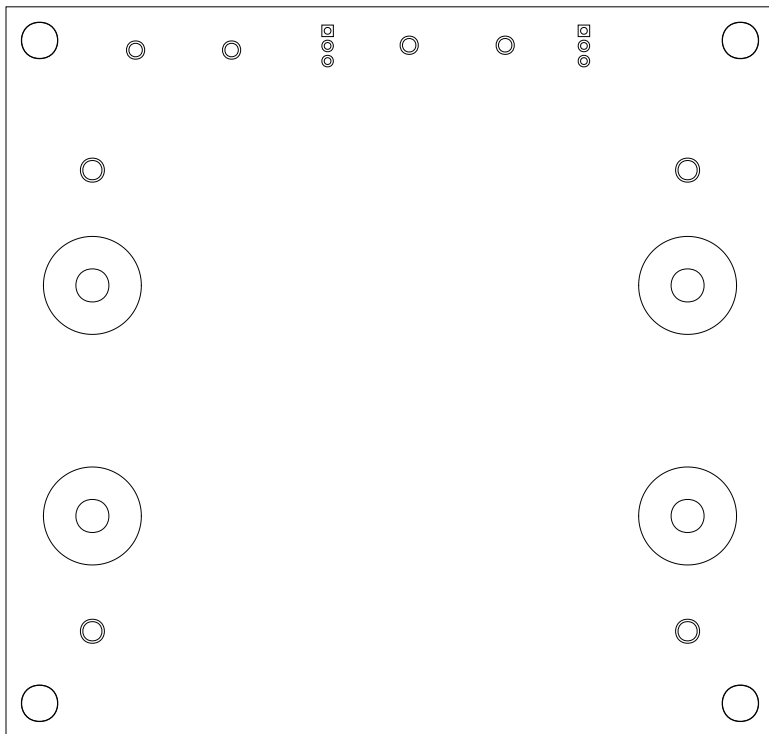
SILKSCREEN SECONDARY  
08-073561-05  
REV C



SOLDERMASK PRIMARY  
08-073561-04  
REV C



SOLDERMASK SECONDARY  
08-073561-06  
REV C



PASTEMASK PRIMARY  
08-073561-13  
REV C

