

MATERIALS; ALL LAMINATES AND BONDING MATERIALS SHOULD BE SELECTED FROM IPC-4101 OR IPC-4103. MINIMUM Tg>170degC, Td>300degC, U.L. RATING OF 94 V-0

MATERIAL FAMILY; ISOLA 370HR OR S1000-2 OR IT180 OR EQUIVALENT

CLADDING; EXTERNAL LAYERS 1 OZ. COPPER
INTERNAL LAYERS 1 OZ. COPPER.

NOTE: IF THE LAYER STACKUP CONFLICTS WITH THE ABOVE CLADDING SPECIFICATIONS THEN THE LAYER STACKUP SHALL TAKE PRECEDENCE.

SOLDER MASK; SHALL BE LIQUID PHOTOIMAGEABLE (LPI) APPLIED ON BOTH SIDES OVER BARE COPPER OR GOLD AND SHALL MEET IPC-SM-840 (LATEST REV.) CLASS 3. COLOR BLUE

SILK SCREEN; SHALL BE PERMANENT NON-CONDUCTIVE EPOXY INK, COLOR: WHITE
SYNTHETIC INKJET PRINTING ALLOWED FOR DENSE BOARDS,
COLOR: WHITE

SURFACE FINISH; ENIG (Electroless Nickel/Immersion Gold)
PER IPC-4552 LATEST REVISION

INTENTIONAL SHORTS; IF SUPPLIED DATA INCLUDES A FILE "READ_ME.2", THEN INTENTIONAL NET SHORTS EXIST. CUSTOMER REVIEW AND APPROVAL IS REQUIRED IF SUPPLIED DATA REPORTS ANY CONDITION THAT DOES NOT MATCH "READ_ME.2" FILE PROVIDED.


TEST REQUIREMENTS; 100% NETLIST ELECTRICAL VERIFICATION USING CUSTOMER SUPPLIED IPC-D-356 NETLIST FOR OPENS AND SHORTS WHEN "GERBER DATA" IS PROVIDED. THIS VERIFICATION ALSO REQUIRED FOR "ODB++" DATA PER EMBEDDED NETLIST.

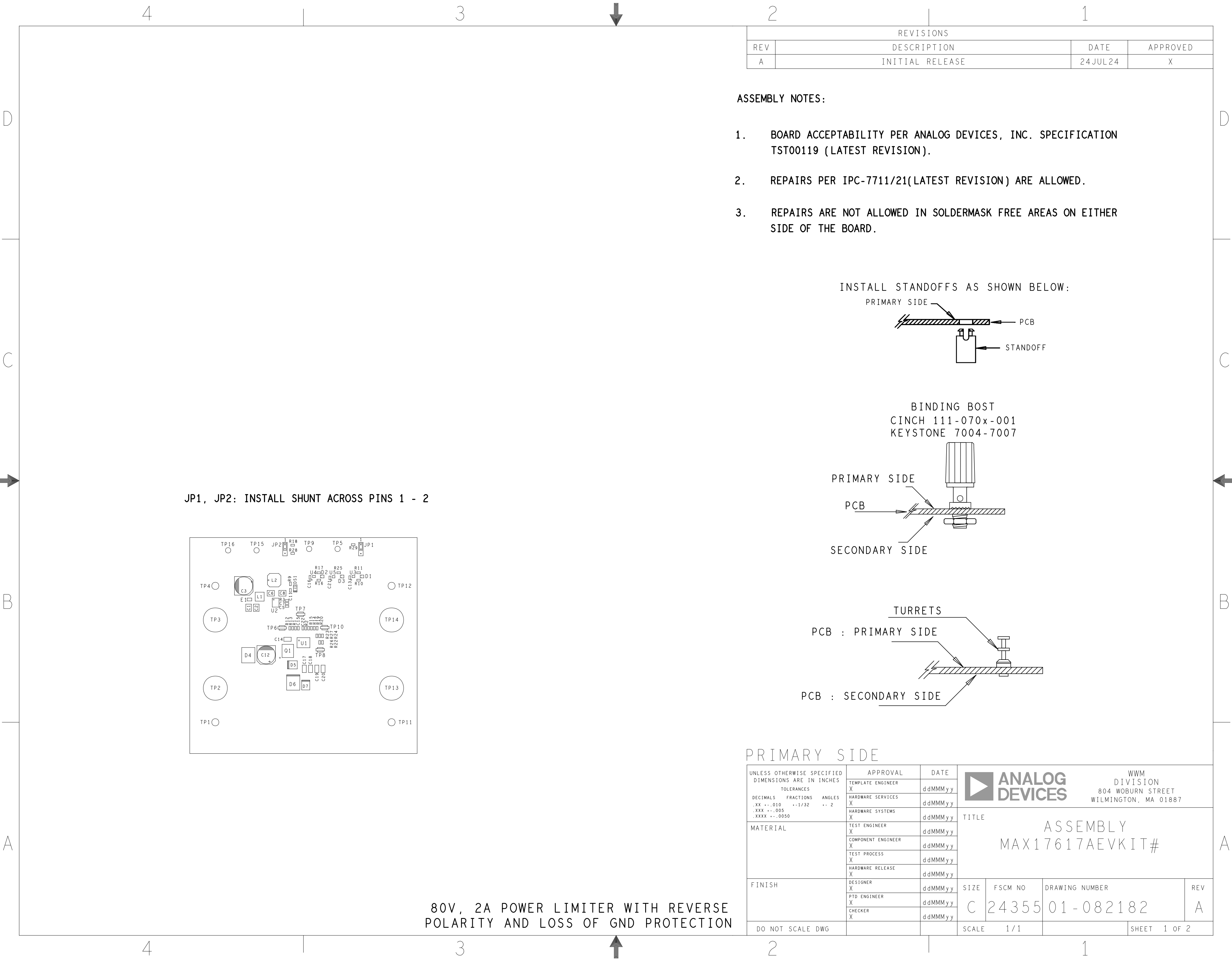
1. REFER TO IPC-6010 SERIES (LATEST REV.), CLASS 2 FOR FABRICATION UNLESS OTHERWISE SPECIFIED.
2. ACCEPTABILITY PER ANALOG DEVICES, INC. SPECIFICATION TST00115, (LATEST REVISION.)
3. MODIFICATIONS TO THE ARTWORK ARE NOT ALLOWED WITHOUT WRITTEN AUTHORIZATION.
4. HOLE PATTERN TOLERANCES FOR UNDIMENSIONED HOLES SHALL BE A DIAMETER OF 0.005 INCHES FROM THEIR TRUE POSITION.
5. PLATED HOLE WALL THICKNESS SHALL NOT BE LESS THAN 0.001 INCH MINIMUM AVERAGE, WITH NO READING LESS THAN .0008 BY CROSS SECTION.
6. HOLE DIAMETERS APPLY AFTER PLATING.
7. VIA SIZE LESS THAN OR EQUAL TO 0.012" SHALL BE PLUGGED AND COVERED WITH SOLDER MASK.
8. FINISHED CONDUCTOR WIDTHS SHALL NOT BE REDUCED FROM THE NOMINAL INDICATED ON THE MASTER PATTERN, BY MORE THAN THE CONDUCTOR THICKNESS.
9. MINIMUM DESIGN LINE WIDTH IS .XXX INCH.
10. MINIMUM DESIGN SPACING IS .XXX INCH.
11. NON-FUNCTIONAL PAD REMOVAL FROM INNER SIGNAL LAYERS MAY BE PERFORMED AFTER CUSTOMER APPROVAL.
12. IF PAD SIZES PROVIDED ARE NOT LARGE ENOUGH TO MAINTAIN ANNULAR RING REQUIREMENT, MFR. MAY REQUEST APPROVAL TO TEAR DROP PADS TO MAINTAIN ANNULAR RING. (AT PAD TO TRACE INTERSECTION ONLY AND ELECTRICAL INTEGRITY MUST BE MAINTAINED.)
13. THIEVING MAY BE ADDED TO COMPENSATE FOR LOW COPPER DENSITY AREAS ON THIS DESIGN ONLY AFTER REVIEW AND APPROVAL FROM THE CUSTOMER:
 - A. THIEVING TO CARD EDGE, FIDUCIALS, NON-PLATED THROUGH HOLES, ALL OTHER FEATURES TO BE 0.200 INCH MINIMUM.
 - B. THERE SHALL BE NO THIEVING IN ANY AREAS FREE OF SOLDER MASK OR INTERNAL COPPER PLANES.
14. MFR. TO LEGIBLY ETCH OR STAMP/SCREEN WITH PERMANENT NON-CONDUCTIVE INK ON SECONDARY SIDE IN A CLEAR AREA UNLESS OTHERWISE INDICATED;
 - A. U.L. CODE-FLAMMABILITY RATING
 - D. MFR LOGO
 - B. DATE CODE (STAMP).
 - E. SUCCESSFUL ELECTRICAL TEST.
 - C. LOT NUMBER
15. REPAIRS PER IPC-7711/21 (LATEST REV.) ARE ALLOWED. REPAIRS ARE NOT ALLOWED IN ANY AREA DEFINED ON GOLD_PRM AND/OR GOLD SEC ARTWORK LAYERS WHEN PROVIDED IN GERBER OR ODB++ DATA.

Diagram illustrating the cross-section of a PCB, showing the layers and their relative thicknesses. The layers are labeled from top to bottom:

- PRIMARY SILKSCREEN
- PRIMARY SOLDER MASK
- PRIMARY SIDE (LAYER 1)
- LAYER 2
- LAYER 3
- SECONDARY SIDE (LAYER 4)
- SECONDARY SOLDER MASK
- SECONDARY SILKSCREEN

The nominal finished thickness is indicated as 0.062" +/- 10%.

		<h1>ANALOG DEVICES</h1>		<p>WWM DIVISION 804 WOBURN STREET WILMINGTON, MA 01887</p>	
SIZE	FSCM NO	DRAWING NUMBER		REV	
C	24355	09-082182		A	
SCALE	1/1			SHEET 2 OF 2	

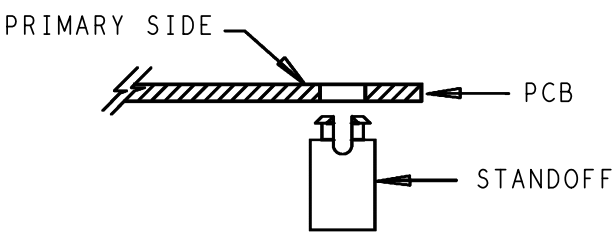


REVISIONS			
REV	DESCRIPTION	DATE	APPROVED
A	INITIAL RELEASE	24 JUL 24	X

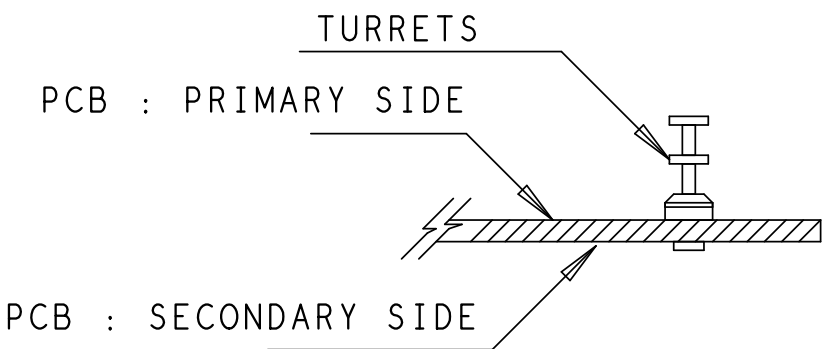
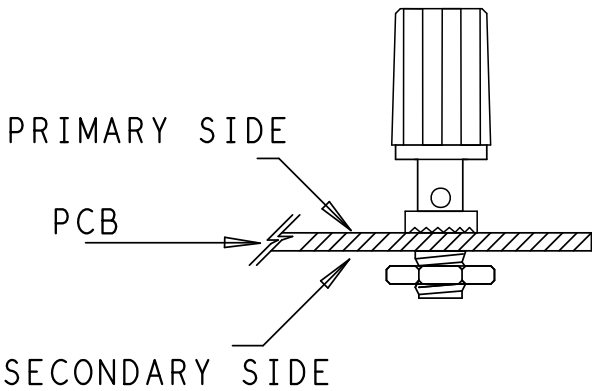
ASSEMBLY NOTES:

- BOARD ACCEPTABILITY PER ANALOG DEVICES, INC. SPECIFICATION TST00119 (LATEST REVISION).
- REPAIRS PER IPC-7711/21(LATEST REVISION) ARE ALLOWED.
- REPAIRS ARE NOT ALLOWED IN SOLDERMASK FREE AREAS ON EITHER SIDE OF THE BOARD.

INSTALL STANDOFFS AS SHOWN BELOW:



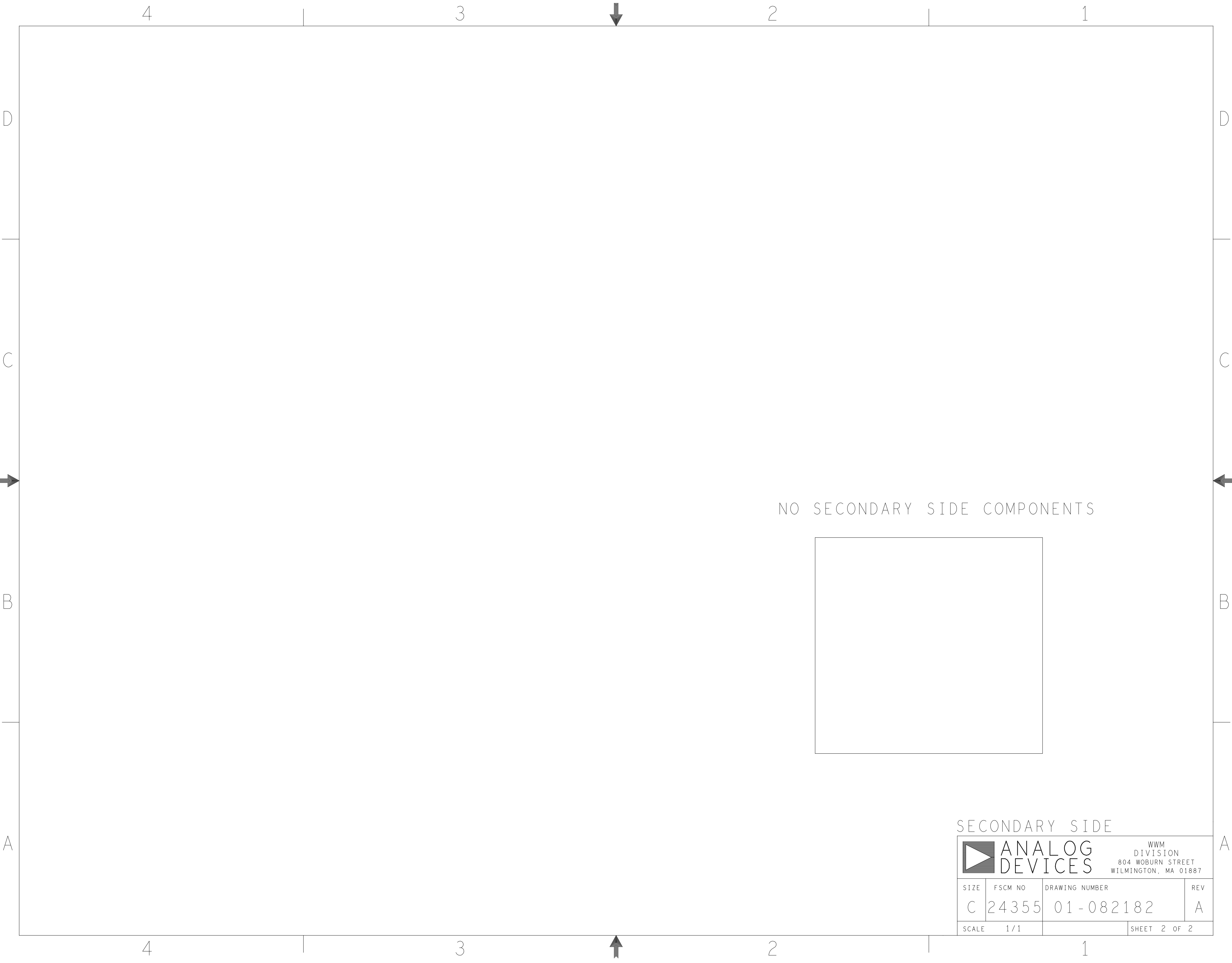
BINDING POST
CINCH 111-070x-001
KEYSTONE 7004-7007



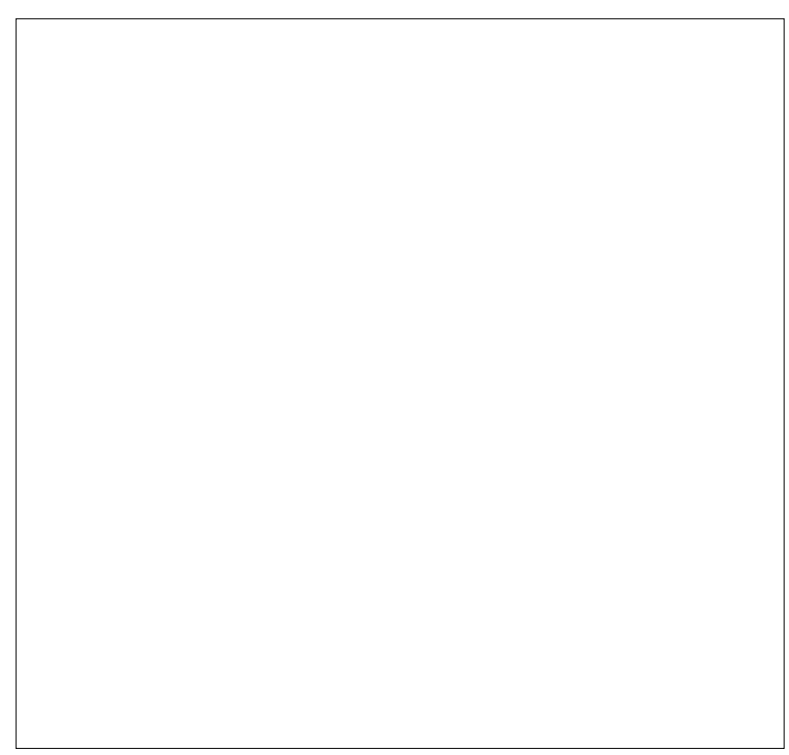
PRIMARY SIDE

UNLESS OTHERWISE SPECIFIED DIMENSIONS ARE IN INCHES TOLERANCES DECIMALS FRACTIONS ANGLES .XX -.010 --1/32 -- 2 .XXX -.005 .XXXX -.0050	APPROVAL	DATE	<div><div></div><div>ANALOG DEVICES</div><div>WWM DIVISION 804 WOBURN STREET WILMINGTON, MA 01887</div></div> <div>TITLE ASSEMBLY MAX17617AEVKIT#</div>			
	TEMPLATE ENGINEER X	ddMMMyy				
	HARDWARE SERVICES X	ddMMMyy				
	HARDWARE SYSTEMS X	ddMMMyy				
MATERIAL	TEST ENGINEER X	ddMMMyy	SIZE C	FSCM NO 24355	DRAWING NUMBER 01-082182	REV A
	COMPONENT ENGINEER X	ddMMMyy				
	TEST PROCESS X	ddMMMyy				
	HARDWARE RELEASE X	ddMMMyy				
FINISH	DESIGNER X	ddMMMyy	SCALE 1 / 1	SHEET 1 OF 2		
	PTD ENGINEER X	ddMMMyy				
	CHECKER X	ddMMMyy				
DO NOT SCALE DWG						

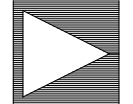
80V, 2A POWER LIMITER WITH REVERSE
POLARITY AND LOSS OF GND PROTECTION



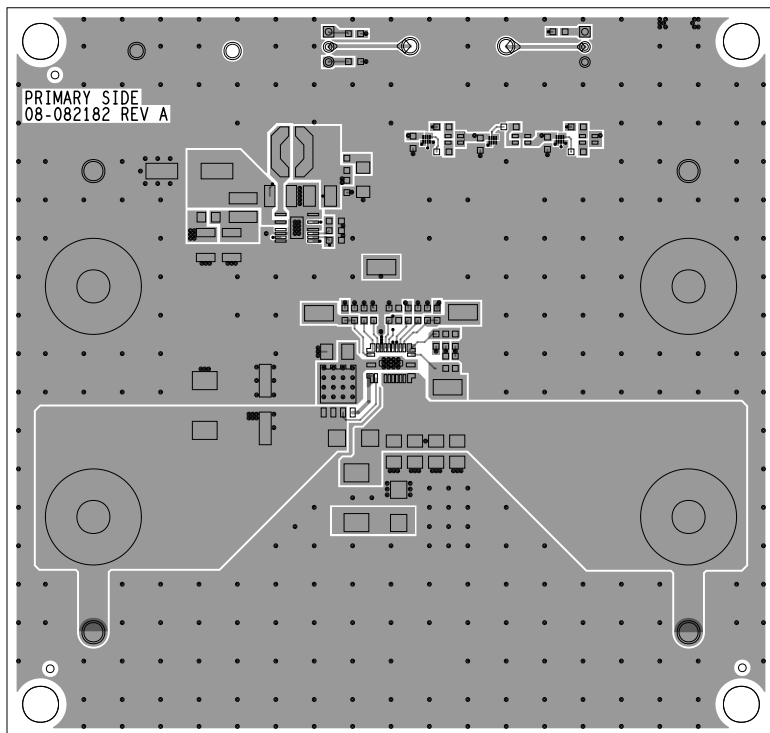
NO SECONDARY SIDE COMPONENTS



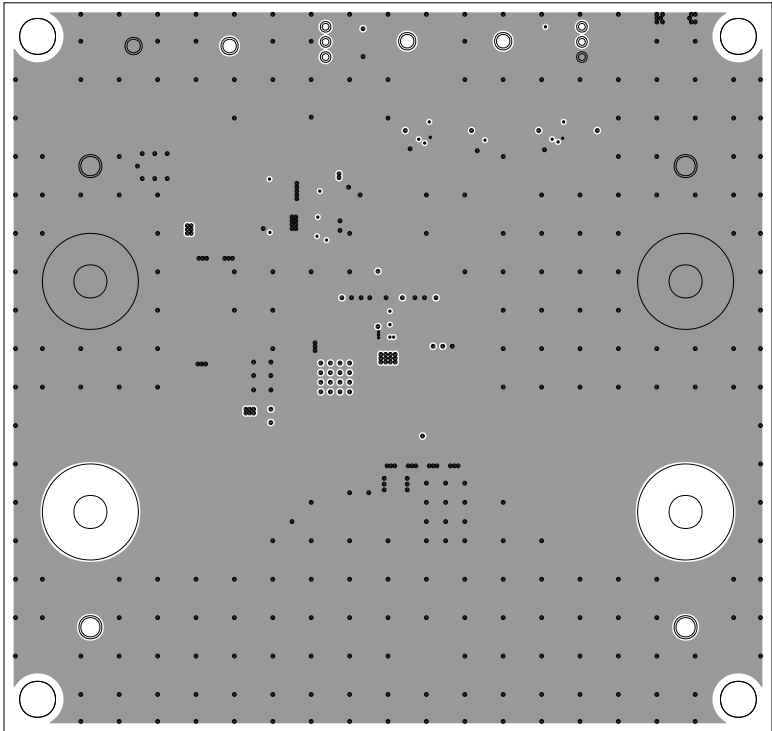
SECONDARY SIDE

		ANALOG DEVICES		WWM DIVISION 804 WOBURN STREET WILMINGTON, MA 01887	
		SIZE	FSCM NO	DRAWING NUMBER	REV
C		24355	01-082182		A
SCALE		1 / 1		SHEET 2 OF 2	

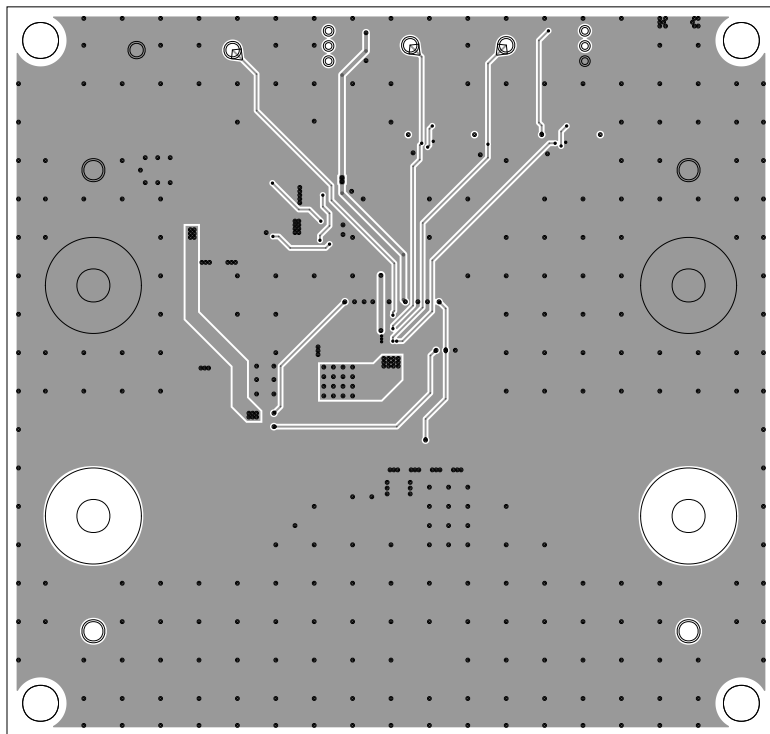
L1 PRIMARY
08-082182-01
REV A



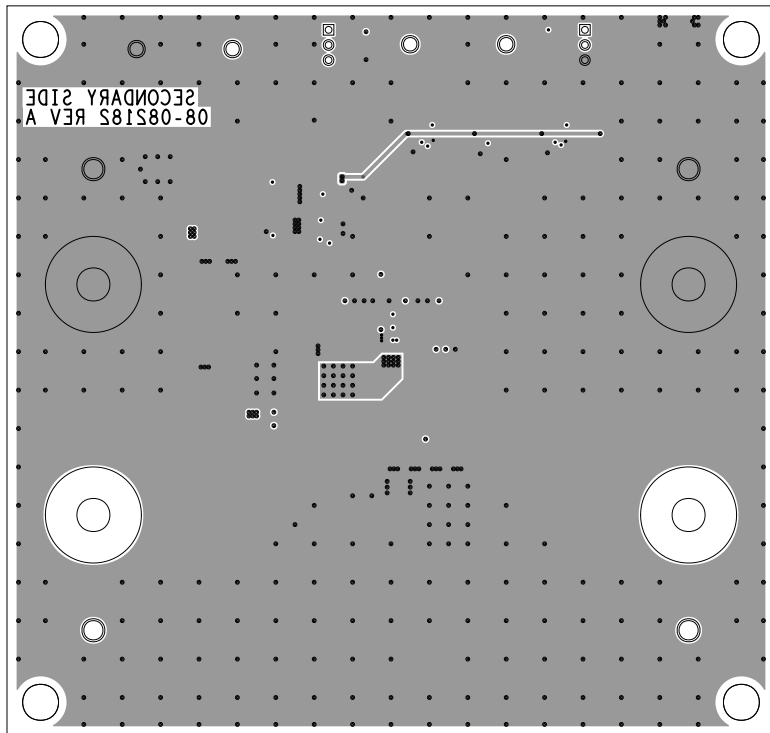
L2 GND/SIGNAL
08-082182-07
REV A



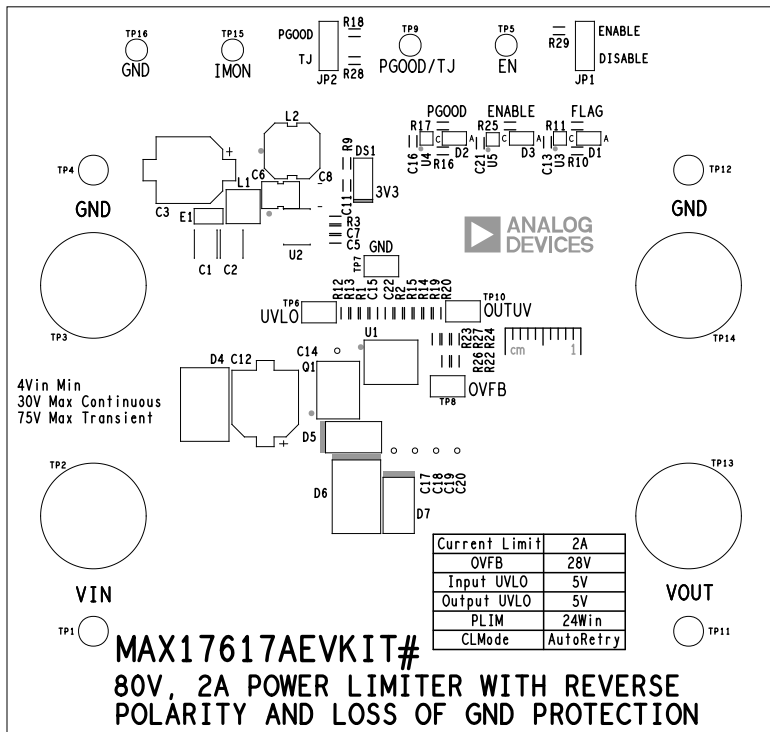
L3 GND/SIGNAL
08-082182-08
REV A



L4 SECONDARY
08-082182-02
REV A



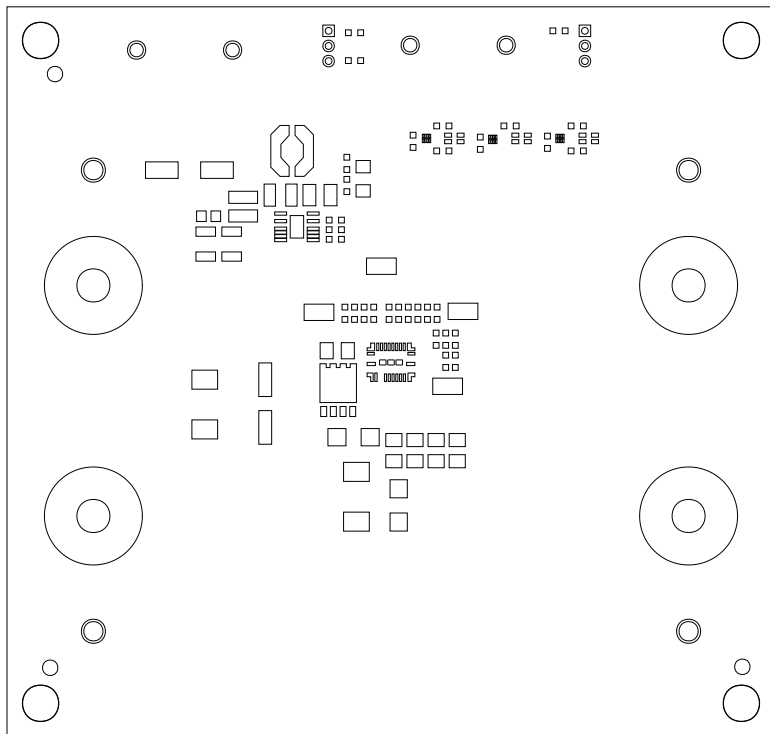
SILKSCREEN PRIMARY
08-082182-03
REV A



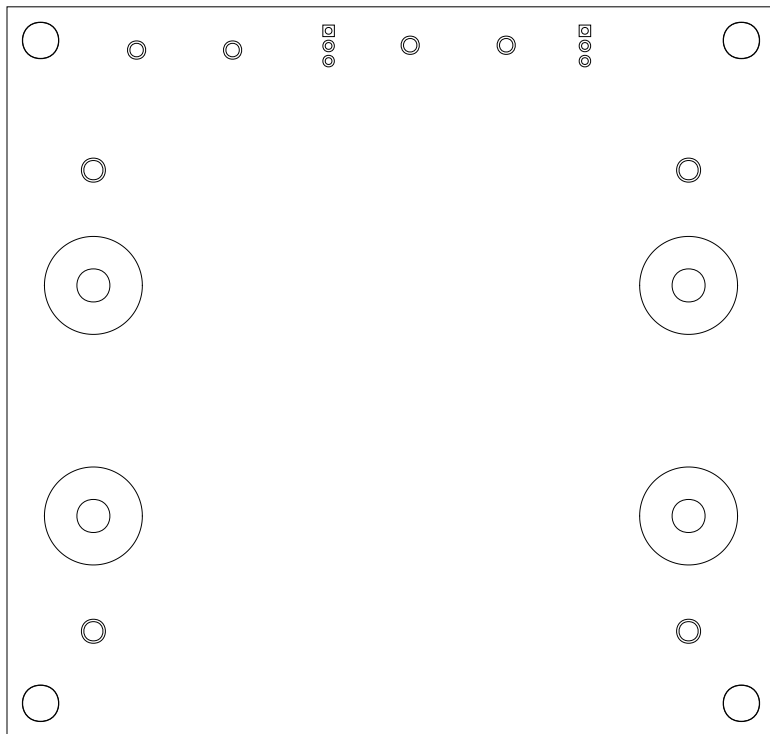
SILKSCREEN SECONDARY
08-082182-05
REV A



SOLDERMASK PRIMARY
08-082182-04
REV A



SOLDERMASK SECONDARY
08-082182-06
REV A



PASTEMASK PRIMARY
08-082182-13
REV A

