

REVISIONS			
REV	DESCRIPTION	DATE	APPROVED
A	INITIAL RELEASE	17OCT23	X

HOLE TOLERANCE
UNLESS SPECIFIED
PLATED: +/- .003
NON PLATED: +/- .002

FINISHED HOLES IN MILS				
ALL UNITS ARE IN MILS				
FIGURE	SIZE	PLATED	QTY	TOLERANCE/NOTES
A	6.0	PLATED	63	
B	10.0	PLATED	245	
X	12.0	PLATED	128	SEE NOTE #20
C	14.0	PLATED	376	
D	70.0	PLATED	12	
E	200.0	PLATED	4	
△	187.0	NON-PLATED	4	

PRIMARY SIDE			UNLESS OTHERWISE SPECIFIED DIMENSIONS ARE IN INCHES			
			TOLERANCES			
			DECIMALS	FRACTIONS	ANGLES	
			.XX +/- .010	--1/32	-- 2	
			.XXX +/- .005			
			.XXXX +/- .0050			
			APPROVAL			
			TEMPLATE ENGINEER		DATE	
			X		ddMMyy	
			HARDWARE SERVICES		ddMMyy	
			X		ddMMyy	
			HARDWARE SYSTEMS		ddMMyy	
			X		ddMMyy	
			TEST ENGINEER		ddMMyy	
			X		ddMMyy	
			COMPONENT ENGINEER		ddMMyy	
			X		ddMMyy	
			TEST PROCESS		ddMMyy	
			X		ddMMyy	
			HARDWARE RELEASE		ddMMyy	
			X		ddMMyy	
			DESIGNER		ddMMyy	
			X		ddMMyy	
			PTD ENGINEER		ddMMyy	
			X		ddMMyy	
			CHECKER		ddMMyy	
			X		ddMMyy	
			DO NOT SCALE DWG			
			SCALE	1 / 1	SHEET	1 OF 2
			SIZE	FSCM NO	DRAWING NUMBER	REV
			C	24355	09-076374	A
			TITLE			
			FABRICATION			
			EVAL-LTC7878-AZ			
			ANALOG DEVICES			
			WWM DIVISION			
			804 WOBURN STREET			
			WILMINGTON, MA 01887			

1. DIMENSIONS ARE IN INCHES (EXCEPT WHERE NOTED).
ALL DOCUMENTS & SPECIFICATIONS REFERRED TO BELOW SHOULD BE THE LATEST REVISIONS.

2. BOARD MATERIAL:(USE CHECKED ITEMS)

- TOOLING:

- FINISH:

- TESTING:

17. FINAL ELECTRICAL TEST TO BE PERFORMED USING PROVIDED IPC-D-356A NETLIST OR ODB++ FORMAT FILE.
THE PCB SHALL HAVE A VERIFICATION STAMP.
18. A TIME DOMAIN REFLECTOMETER REPORT (TDR) FOR EACH IMPEDANCE CONTROLLED LAYER & A CERTIFICATE OF COMPLIANCE SHALL BE PROVIDED BY VENDOR AT TIME OF SHIPMENT. INSTANCES WHERE TDR TESTING CAN'T BE PERFORMED BECAUSE THE TRACE LENGTH IS TOO SHORT ON THE OUTER LAYERS AT THE PIN ESCAPES IS ACCEPTABLE. ALL OTHER INSTANCES MUST BE REPORTED.

19. IF PRESENT, ALL BLIND/BURIED VIAS WITH AN ASPECT RATIO <1:1 TO BE PLATED SHUT WITH COPPER WHEN USED AS VIA-IN-PAD OR AS A STACKED VIA. BLIND/BURIED VIAS WITH AN ASPECT RATIO >1:1 TO BE FILLED WITH NON-CONDUCTIVE EPOXY.
20. FOR VIA FILL INFORMATION REFER TO DRILL CHART:
 - (X) NON-CONDUCTIVE EPOXY FILL ALL 0.012 INCHES DRILLED VIAS
 - () COPPER FILL ALL 0.0XXX INCHES DRILLED VIAS
21. INTENTIONAL SHORTS:
 - IF AN INTENTIONAL SHORT REPORT IS SUPPLIED AND DOES NOT MATCH THE FAB DATA THEN ADI APPROVAL IS REQUIRED.
22. PEMNUTS:
 - () PEMNUTS TO BE INSTALLED BY FABRICATOR
 - () PEMNUTS NOT TO BE INSTALLED BY FABRICATOR
 - (X) NOT APPLICABLE
23. MANUFACTURER TO ETCH/STAMP WITH PERMANENT NON-CONDUCTIVE INK ON SECONDARY SIDE UNLESS OTHERWISE SPECIFIED:
 - A. UL CODE-FLAMMABILITY RATING FOR THOSE APPROVED MATERIALS(IF APPLICABLE)
 - B. DATE CODE
 - C. LOT NUMBER
 - D. MANUFACTURER LOGO
25. PANELIZATION:
 - BOARDS TO BE SHIPPED IN ARRAY AND KEPT INTACT
 - PANEL TO BE SUBJECTED TO CUSTOMERS APPROVAL
 - PANEL SOLDER PASTE STENCIL GERBER TO BE PROVIDED TO ANALOG
27. MINIMUM DESIGN LINE WIDTH IS .006 INCH.
28. MINIMUM DESIGN LINE SPACING IS .006 INCH.

FAB NOTES REVISION: 2ND NOVEMBER 2022

LAMINATION DIAGRAM				
LAYER NUMBER	LAYER NAME	COPPER THICKNESS (OZ, INCH)	DIELECTRIC THICKNESS (INCH)	MATERIALS
1	TOP	2 OZ, 0.0028"		FINAL CU (THICKNESS AFTER PLATING)
			0.006	ISOLA 370HR/EQUIVALENT
2	LAYER_2	2 OZ, 0.0028"		CU CLAD
			0.010	ISOLA 370HR/EQUIVALENT
3	LAYER_3	2 OZ, 0.0028"		CU CLAD
			AS REQ'D	ISOLA 370HR/EQUIVALENT
4	LAYER_4	2 OZ, 0.0028"		CU CLAD
			0.010	ISOLA 370HR/EQUIVALENT
5	LAYER_5	2 OZ, 0.0028"		CU CLAD
			0.006	ISOLA 370HR/EQUIVALENT
6	BOTTOM	2 OZ, 0.0028"		FINAL CU (THICKNESS AFTER PLATING)

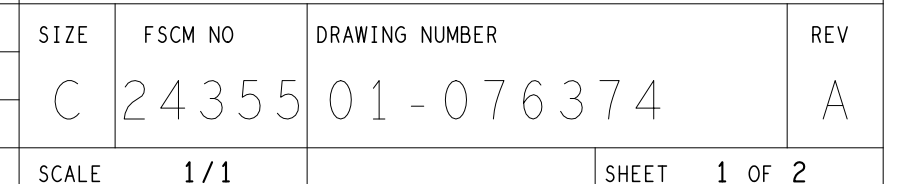
THE FINISHED PCB THICKNESS TO BE: 0.062" +/-10%

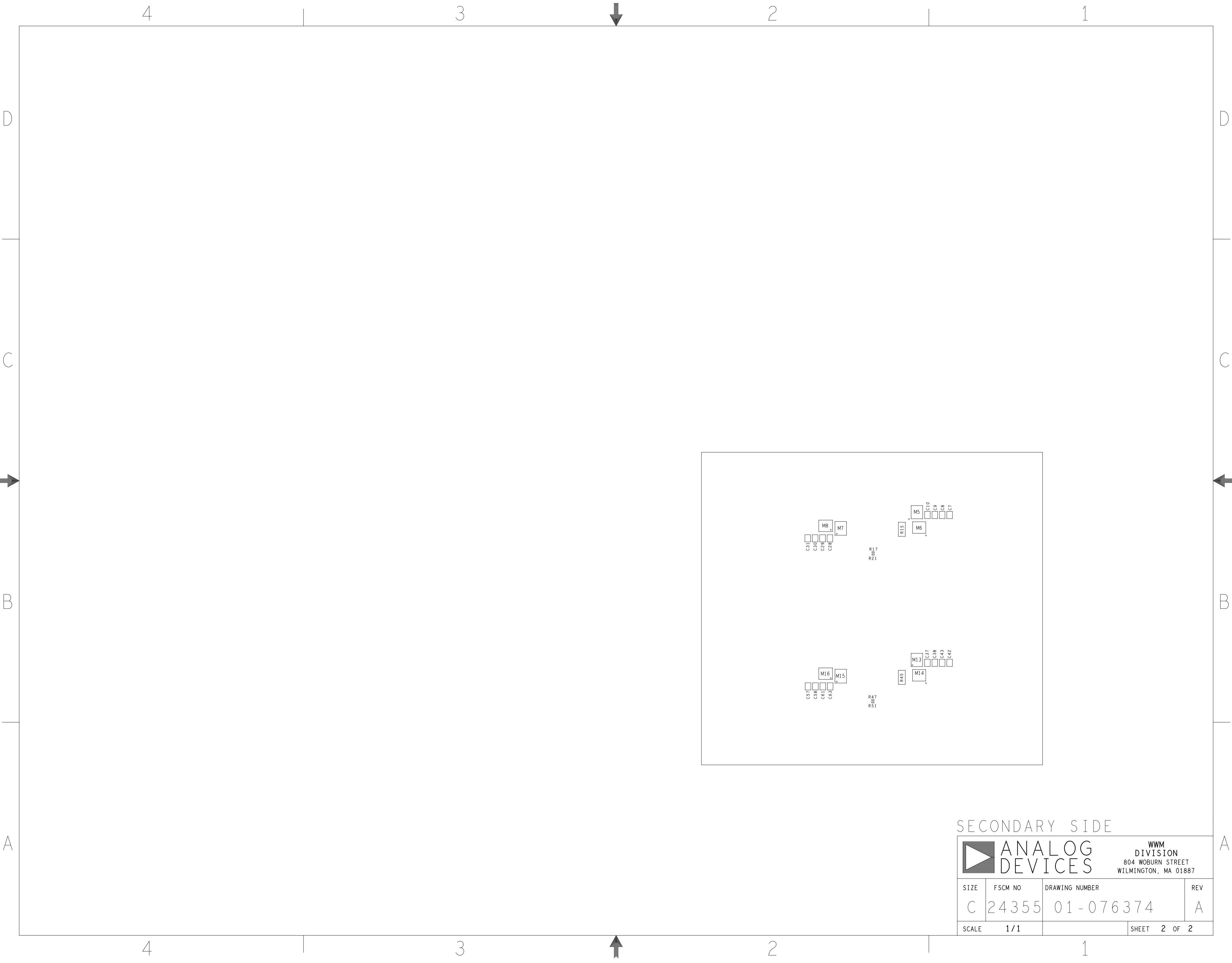


ANALOG
DEVICES

WWM
DIVISION
804 WOBURN STREET
WILMINGTON, MA 01887

SIZE	FSCM NO	DRAWING NUMBER	REV
C	24355	09-076374	A
SCALE	1/1	SHEET 2 OF 2	

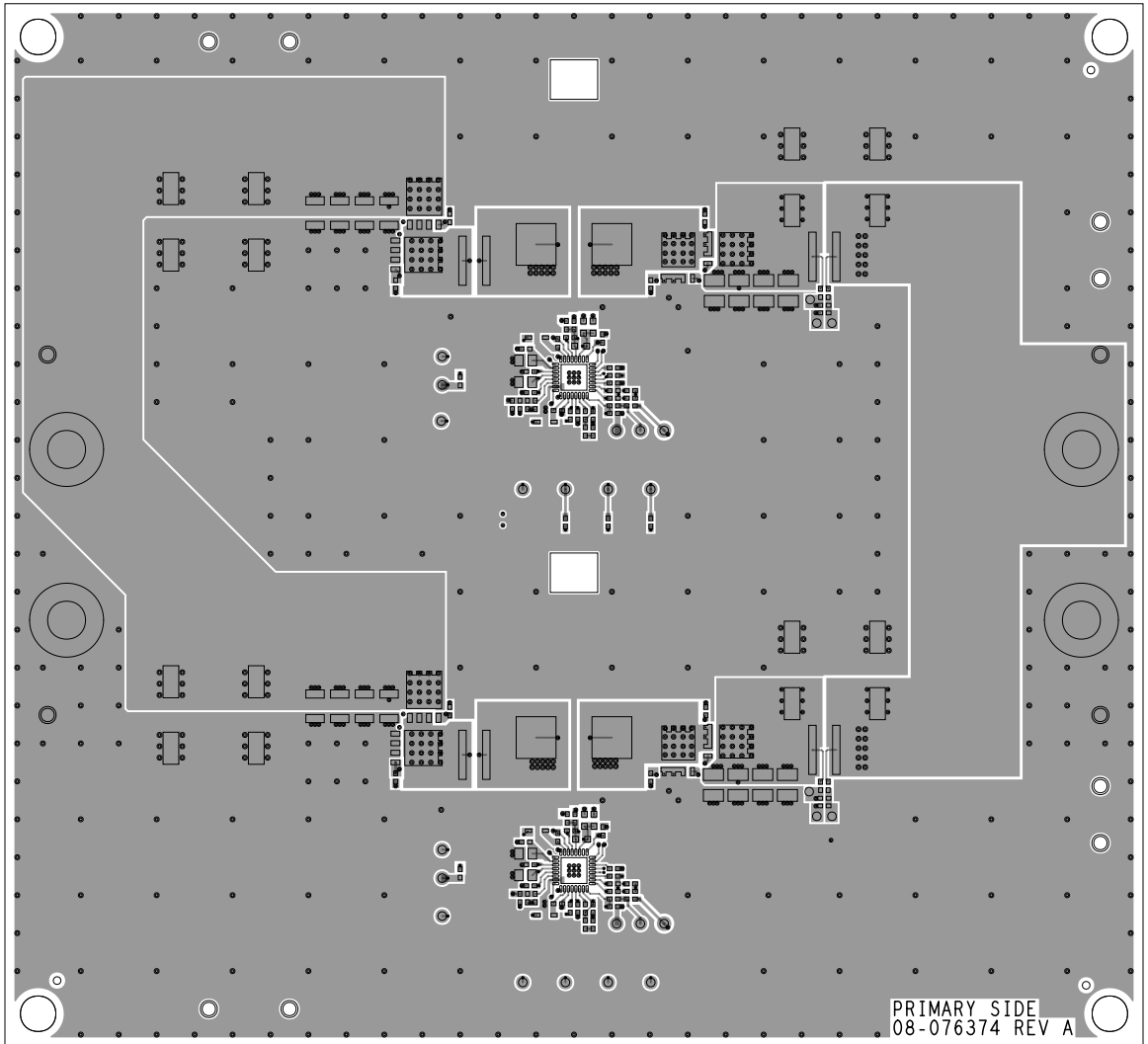




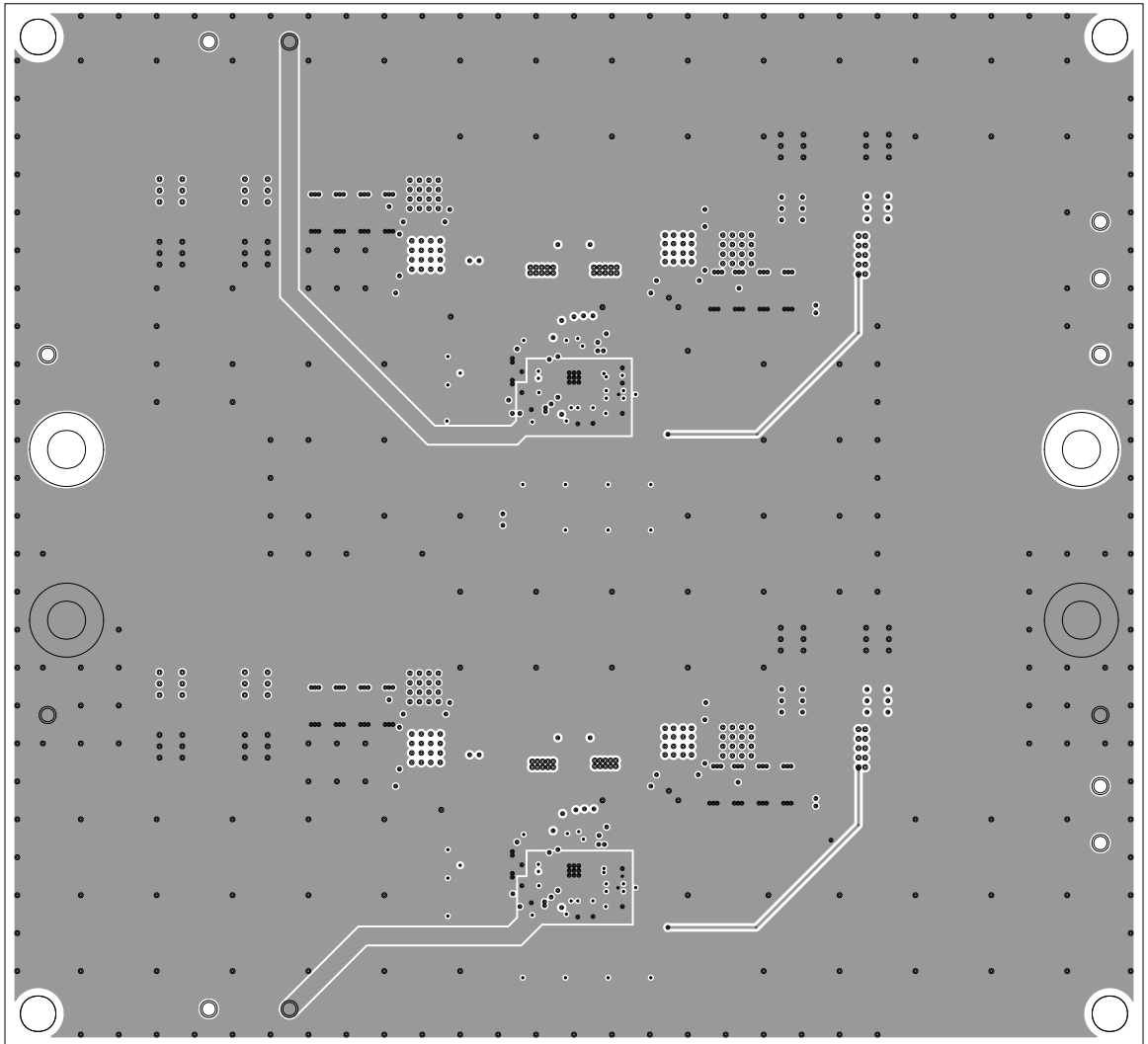
SECONDARY SIDE

<div><div><div></div></div><div><div>ANALOG</div><div>DEVICES</div></div></div>				WWM DIVISION 804 WOBURN STREET WILMINGTON, MA 01887	
SIZE	FSCM NO	DRAWING NUMBER		REV	
C	24355	01-076374		A	
SCALE	1/1			SHEET	2 OF 2

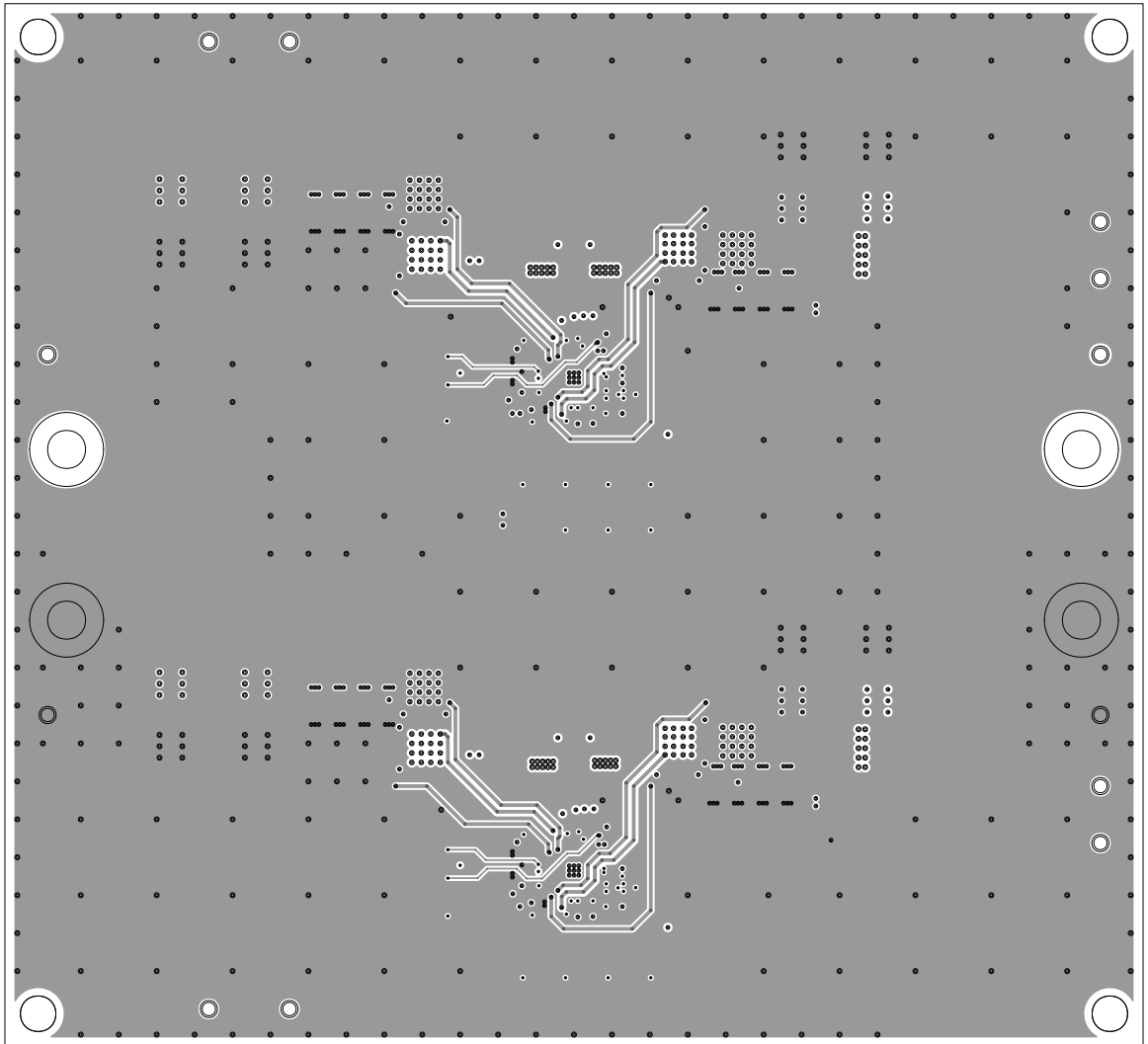
L1 PRIMARY
08-076374-01
REV A



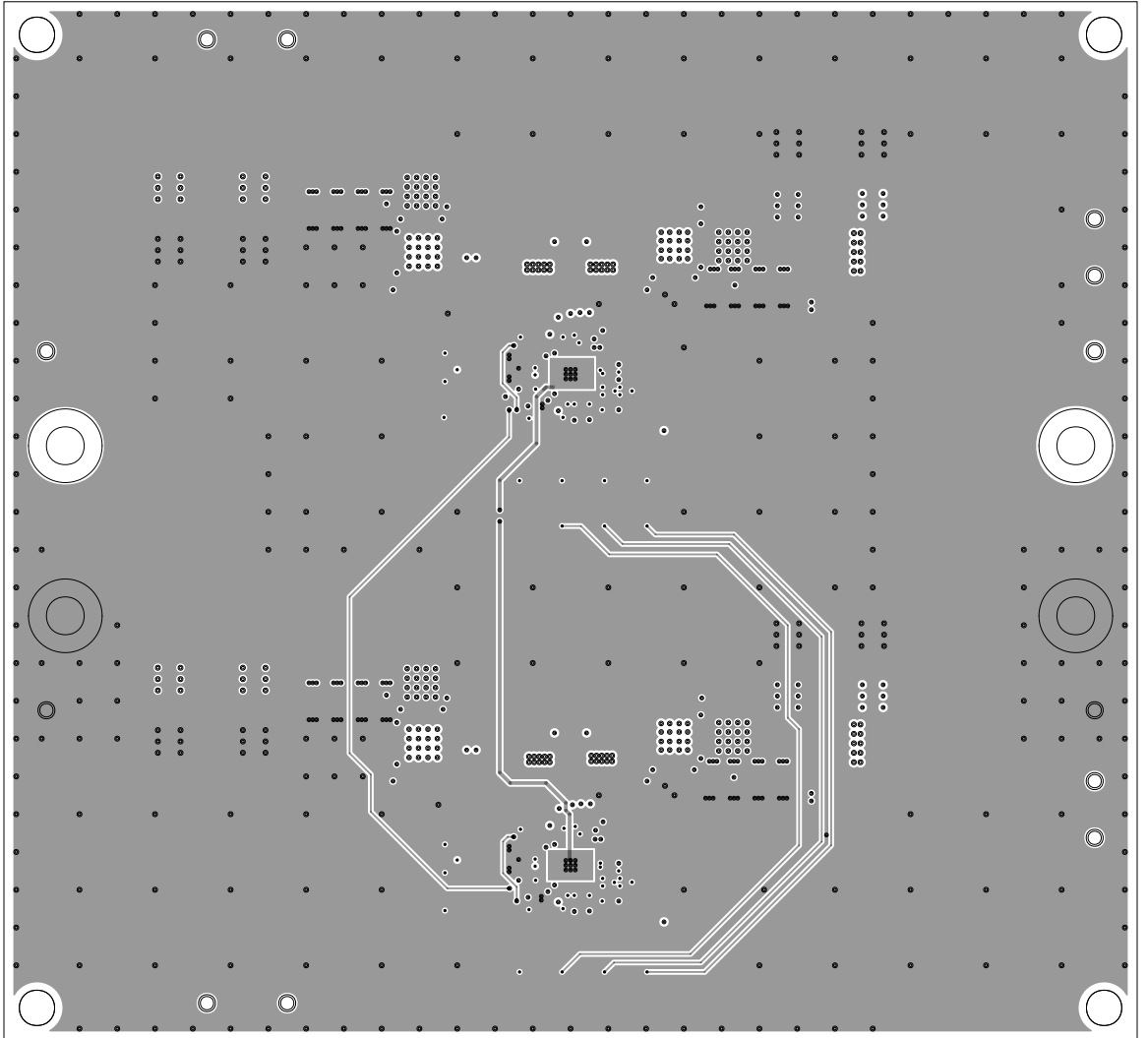
L2 INTERNAL
08-076374-07
REV A



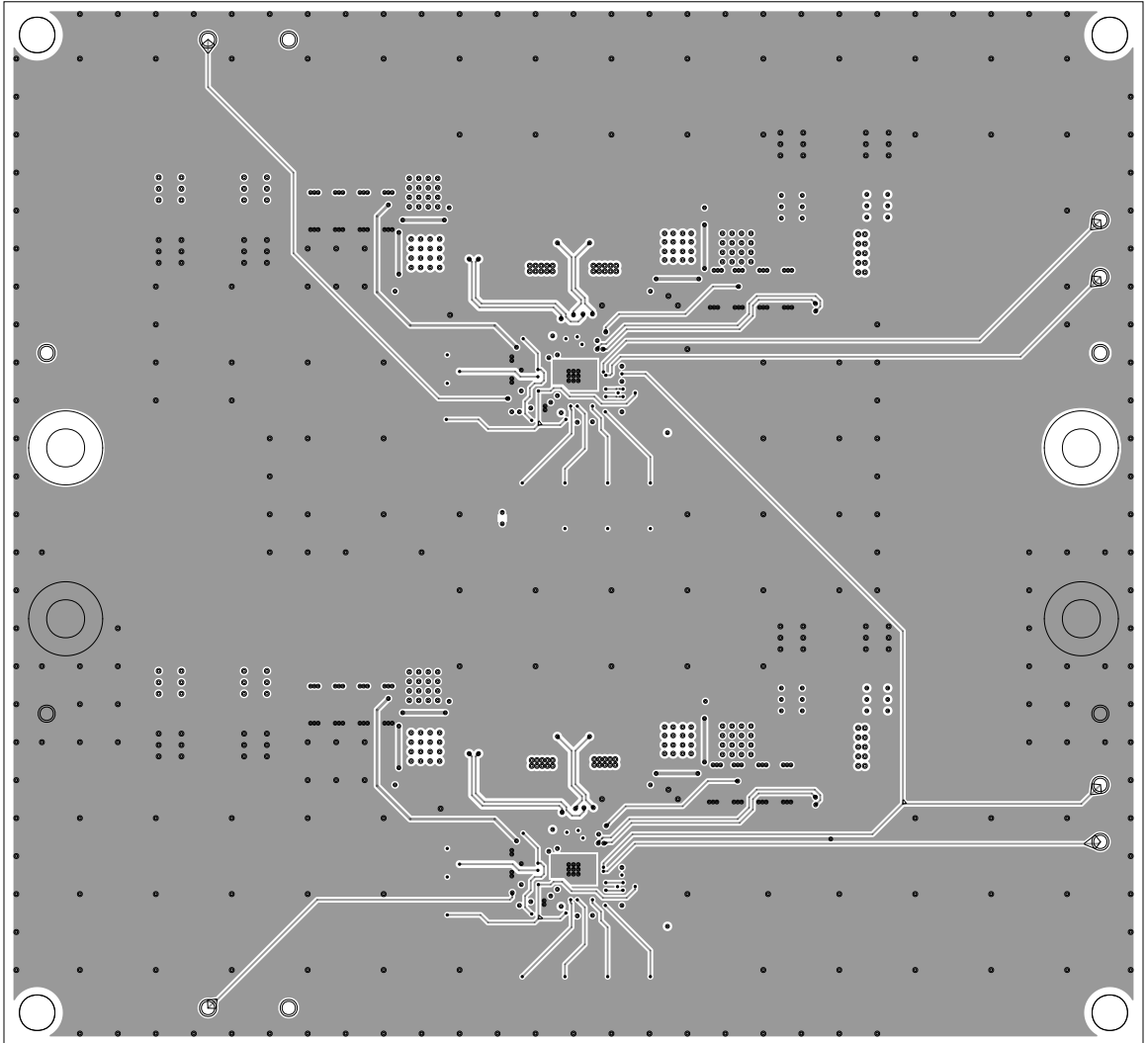
L3 INTERNAL
08-076374-08
REV A



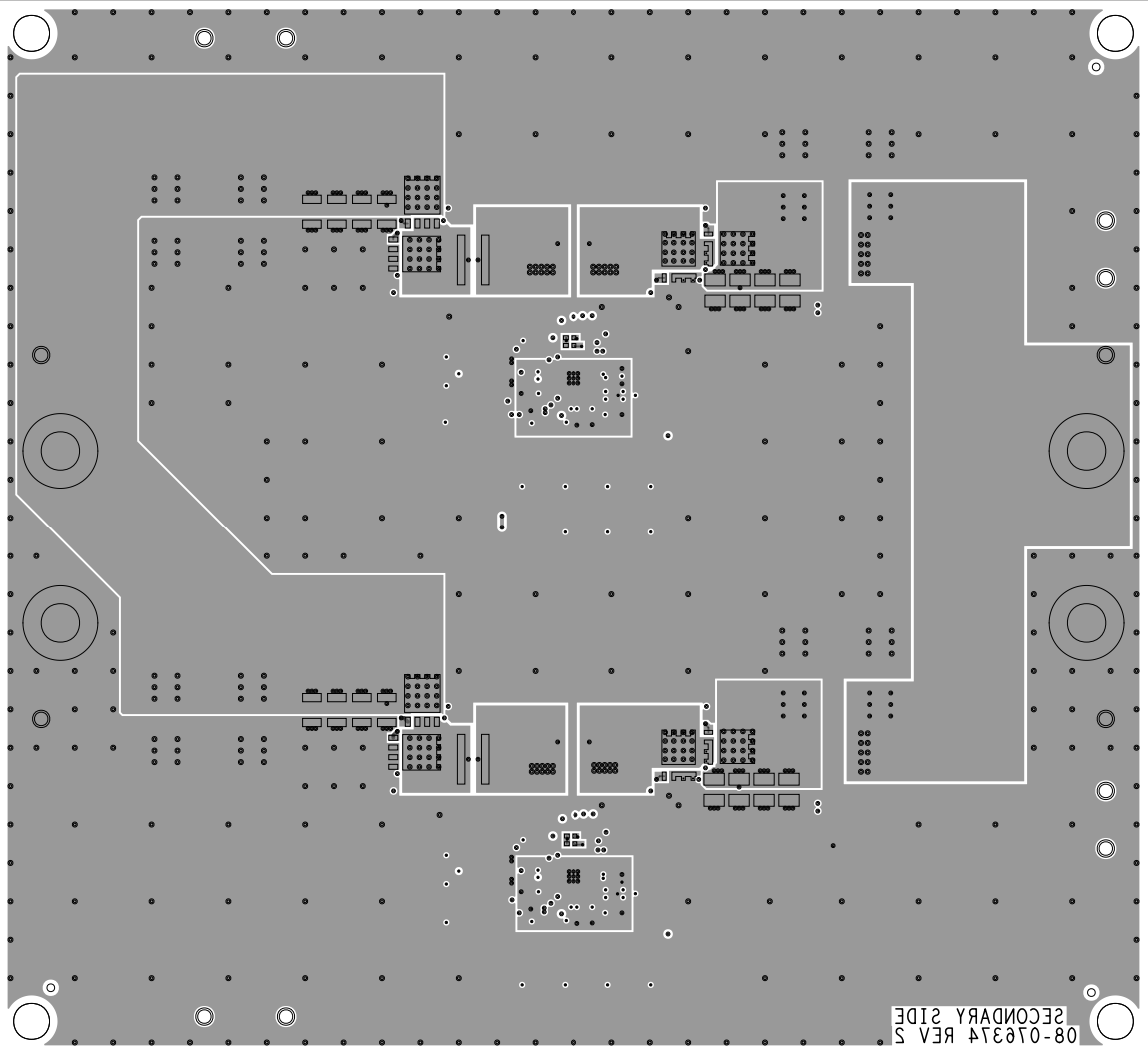
L4 INTERNAL
08-076374-09
REV A



L5 INTERNAL
08-076374-10
REV A



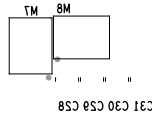
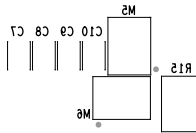
L6 SECONDARY
08-076374-02
REV A



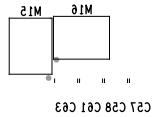
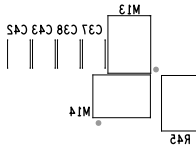
LTC7878
70V PARALLEL DUAL PHASE
4-SWITCH BUCK-BOOST
EVAL-LTC7878-AZ



SILKSCREEN SECONDARY
08-076374-05
REV A



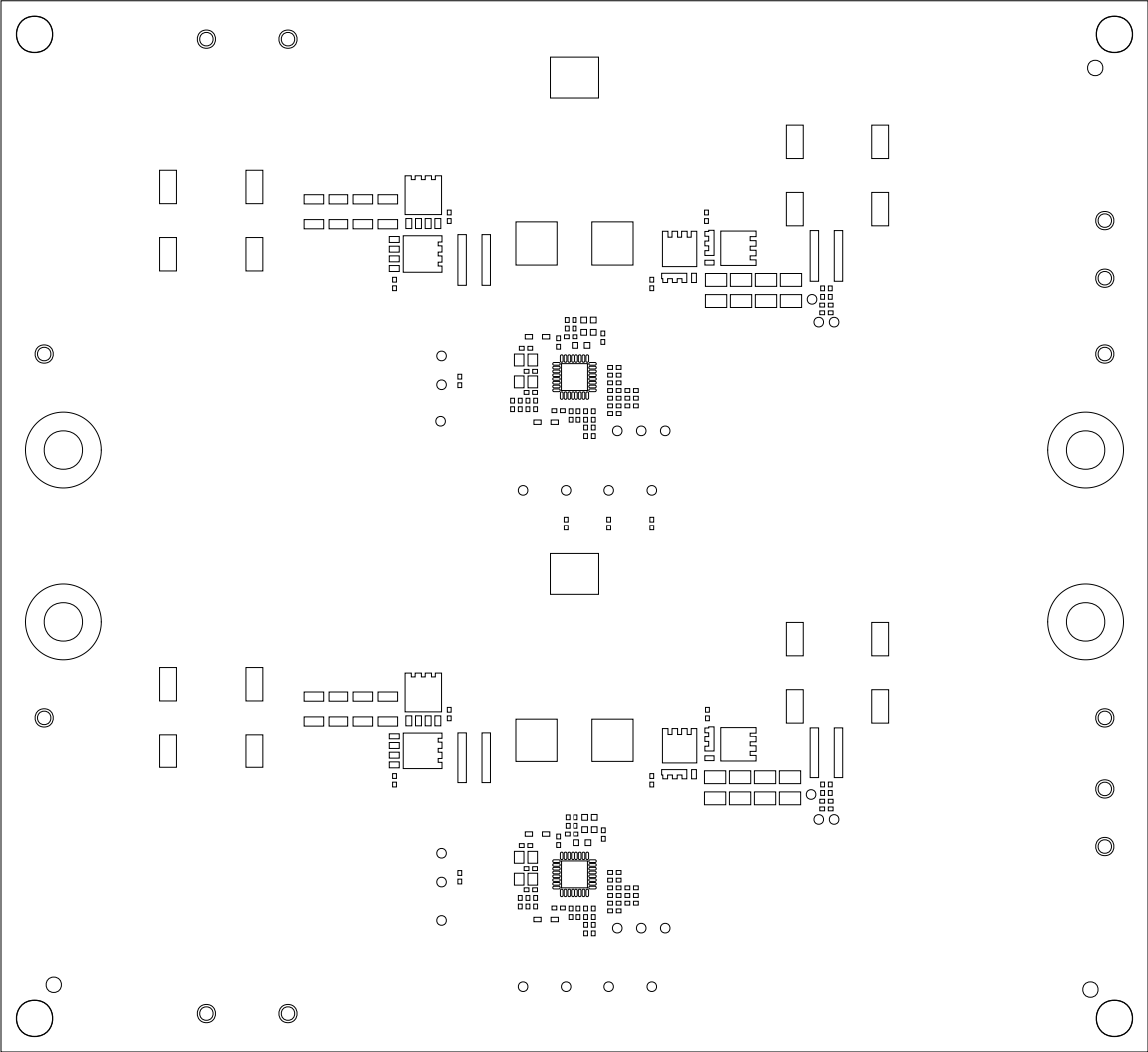
≡ R11
≡ R12



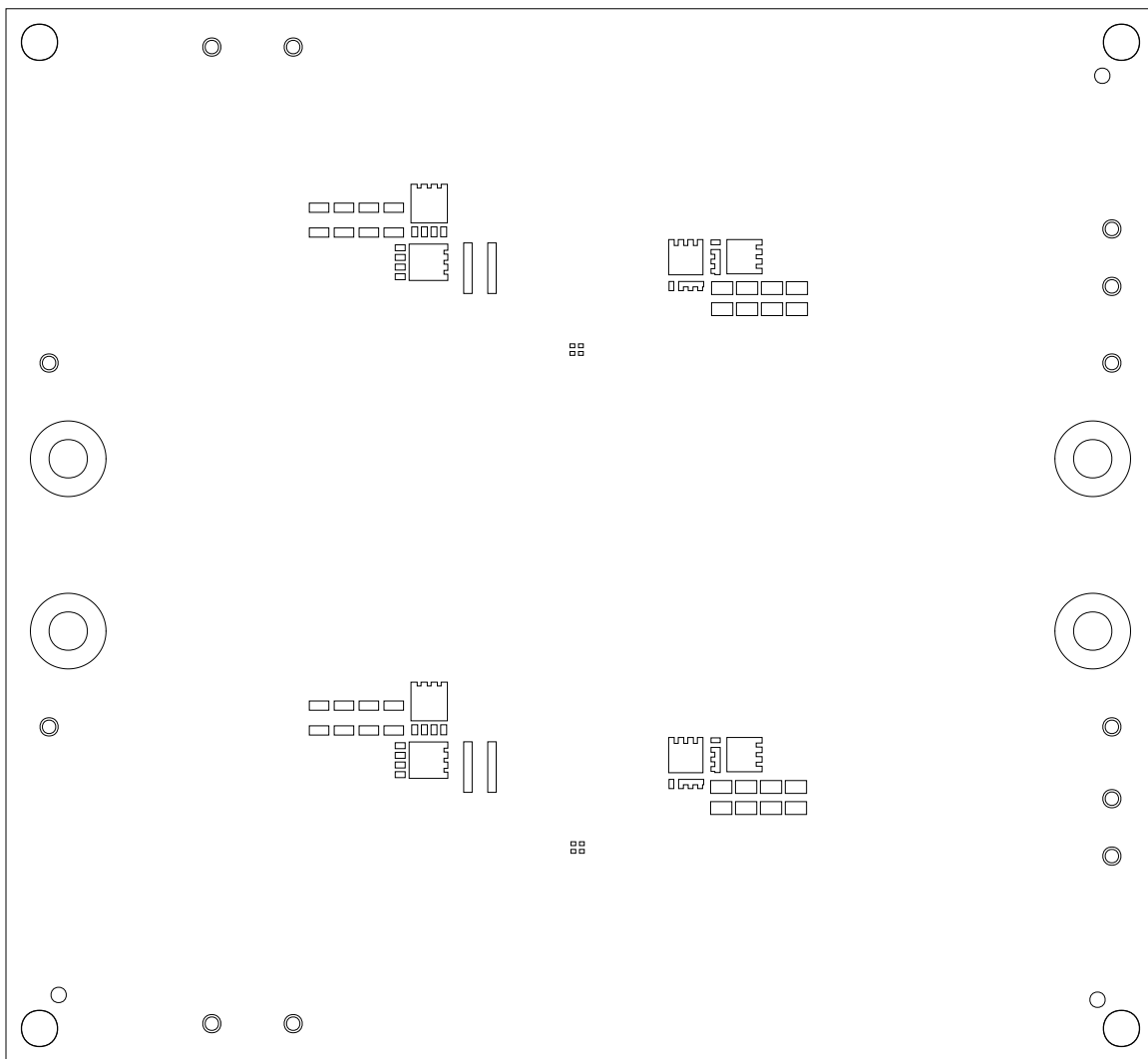
≡ R11
≡ R12



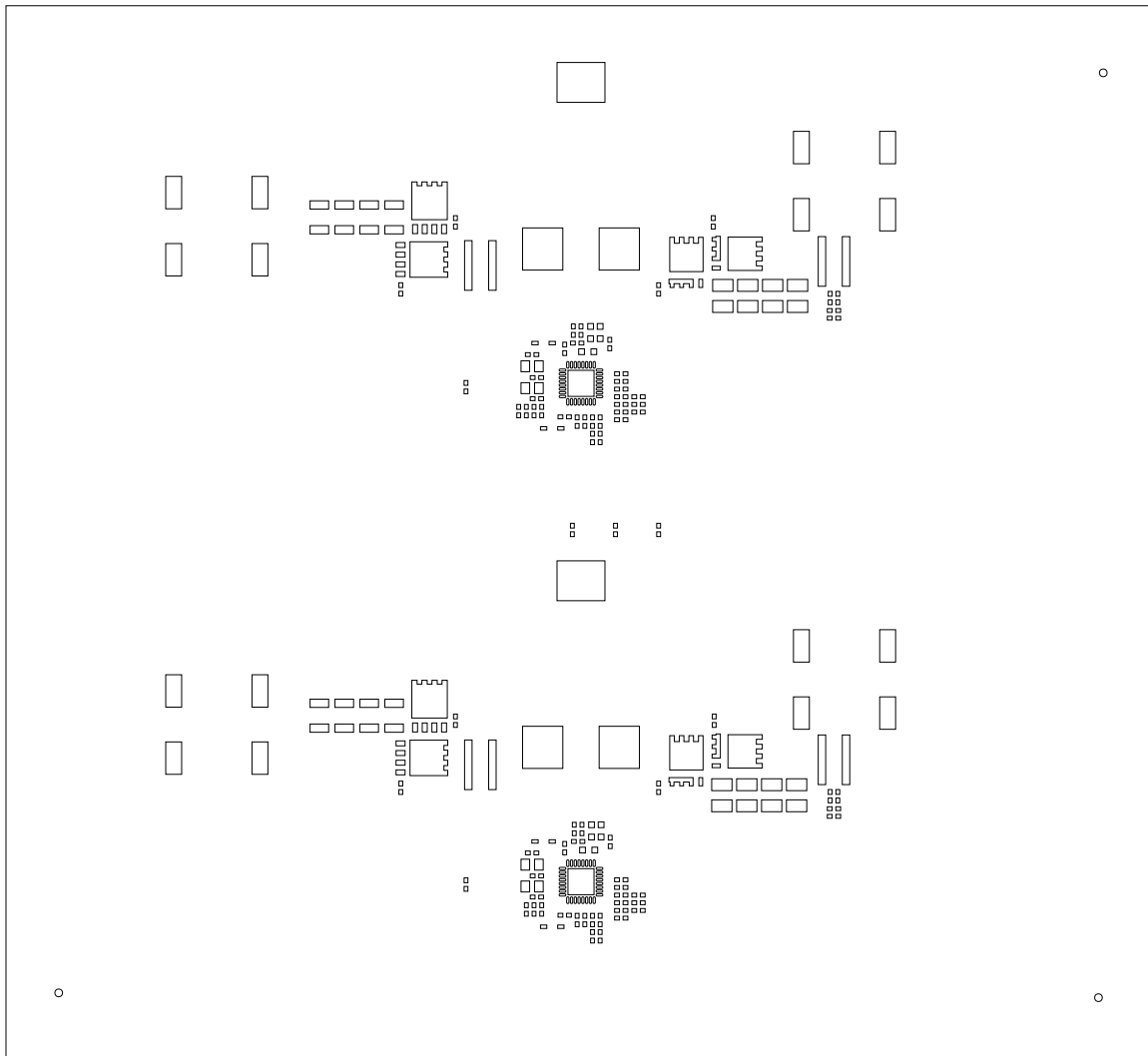
SOLDERMASK PRIMARY
08-076374-04
REV A



SOLDERMASK SECONDARY
08-076374-06
REV A



PASTEMASK PRIMARY
08-076374-13
REV A



PASTEMASK SECONDARY
08-076374-14
REV A

