

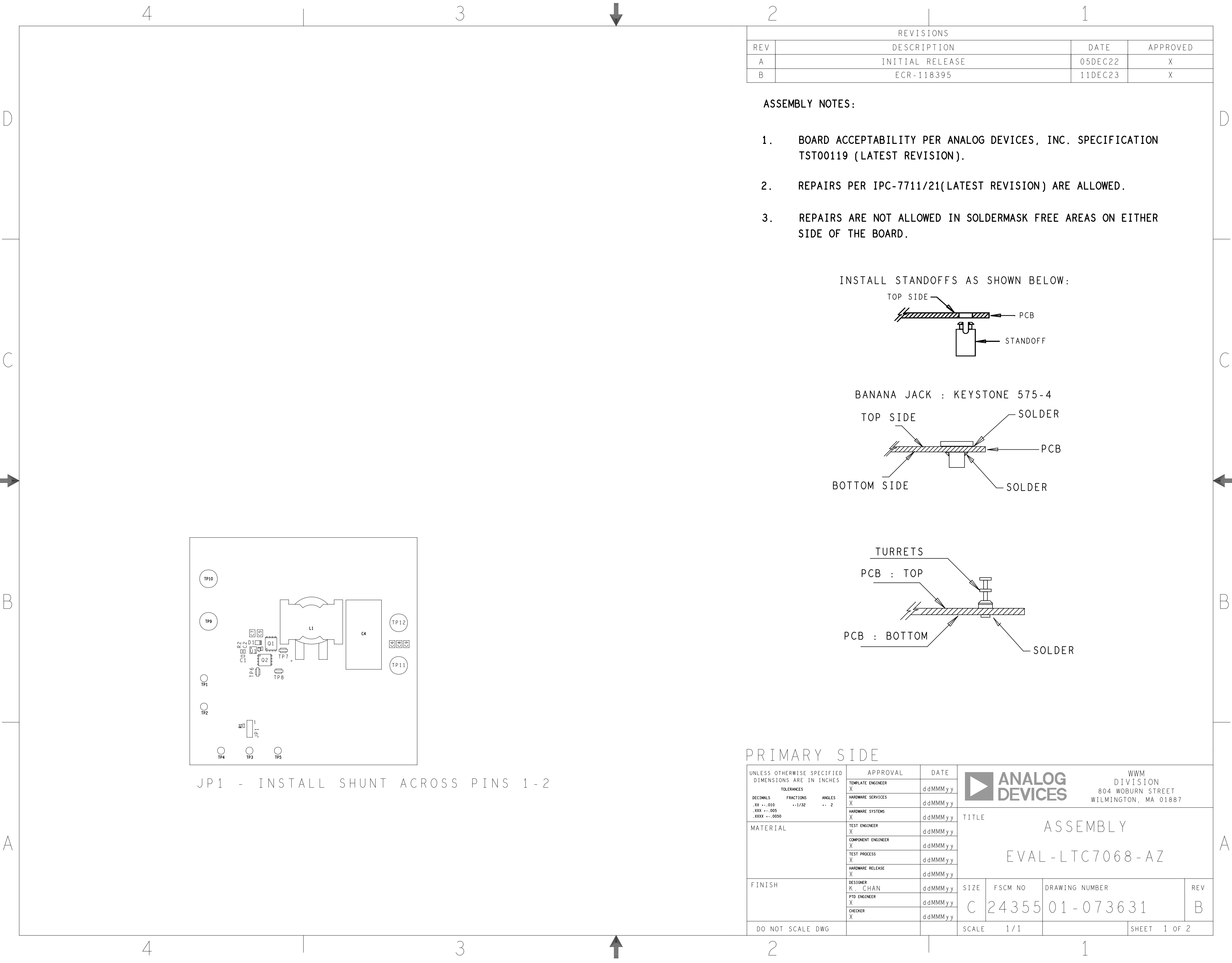
REVISIONS			
REV	DESCRIPTION	DATE	APPROVED
A	INITIAL RELEASE	05DEC22	X
B	ECR-118395	11DEC23	X

HOLE TOLERANCE  
UNLESS SPECIFIED  
PLATED: +/- .003  
NON PLATED: +/- .002

FINISHED HOLES IN MILS				
ALL UNITS ARE IN MILS				
FIGURE	SIZE	PLATED	QTY	TOLERANCE/NOTES
+	6.0	PLATED	2	
□	10.0	PLATED	365	
◦	45.0	PLATED	5	
○	100.0	PLATED	5	
◇	213.0	PLATED	4	
△	187.0	NON-PLATED	4	

PRIMARY SIDE			APPROVAL		DATE		<div><div></div><div>ANALOG DEVICES</div></div> <div>WWM DIVISION 804 WOBURN STREET WILMINGTON, MA 01887</div>					
UNLESS OTHERWISE SPECIFIED DIMENSIONS ARE IN INCHES			TOLERANCES		X		TITLE  FABRICATION  EVAL-LTC7068-AZ					
DECIMALS	FRACTIONS	ANGLES	HARDWARE SERVICES		X							
.XX +/- .010	-- 1/32	-- 2	HARDWARE SYSTEMS		X							
.XXX +/- .005												
.XXXX +/- .0050												
MATERIAL			TEST ENGINEER		X		SIZE C					
			COMPONENT ENGINEER		X							
			TEST PROCESS		X							
			HARDWARE RELEASE		X							
FINISH			DESIGNER		K. CHAN		FSCM NO		DRAWING NUMBER		REV B	
			PTD ENGINEER		X		24355		09-073631			
			CHECKER		X		1 / 1		1 OF 2			
DO NOT SCALE DWG							SCALE		1 / 1		SHEET 1 OF 2	

SIZE	FSCM NO	DRAWING NUMBER	REV
C	24355	09-073631	E
SCALE	1/1	SHEET	2 OF 2



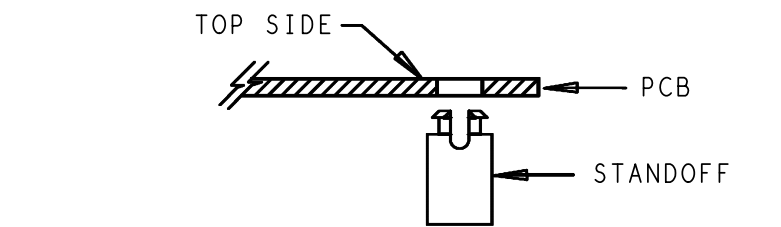
JP1 - INSTALL SHUNT ACROSS PINS 1-2

REVISIONS			
REV	DESCRIPTION	DATE	APPROVED
A	INITIAL RELEASE	05DEC22	X
B	ECR-118395	11DEC23	X

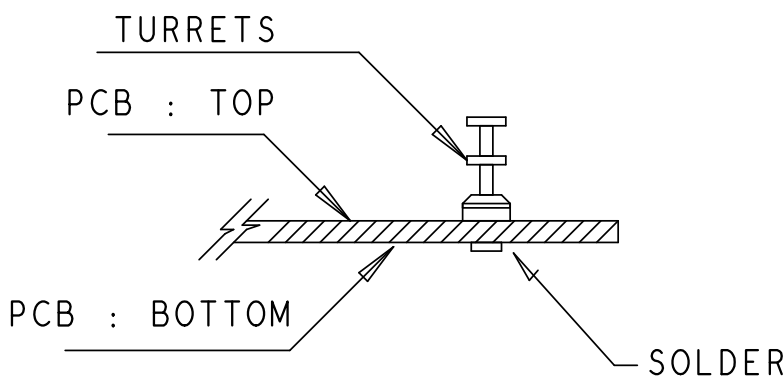
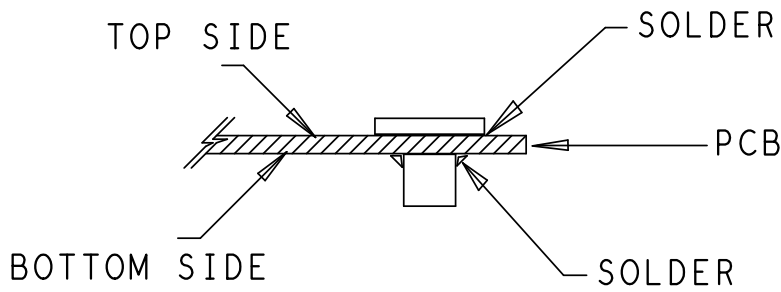
ASSEMBLY NOTES:

- 1. BOARD ACCEPTABILITY PER ANALOG DEVICES, INC. SPECIFICATION TST00119 (LATEST REVISION).
- 2. REPAIRS PER IPC-7711/21(LATEST REVISION) ARE ALLOWED.
- 3. REPAIRS ARE NOT ALLOWED IN SOLDERMASK FREE AREAS ON EITHER SIDE OF THE BOARD.

INSTALL STANDOFFS AS SHOWN BELOW:

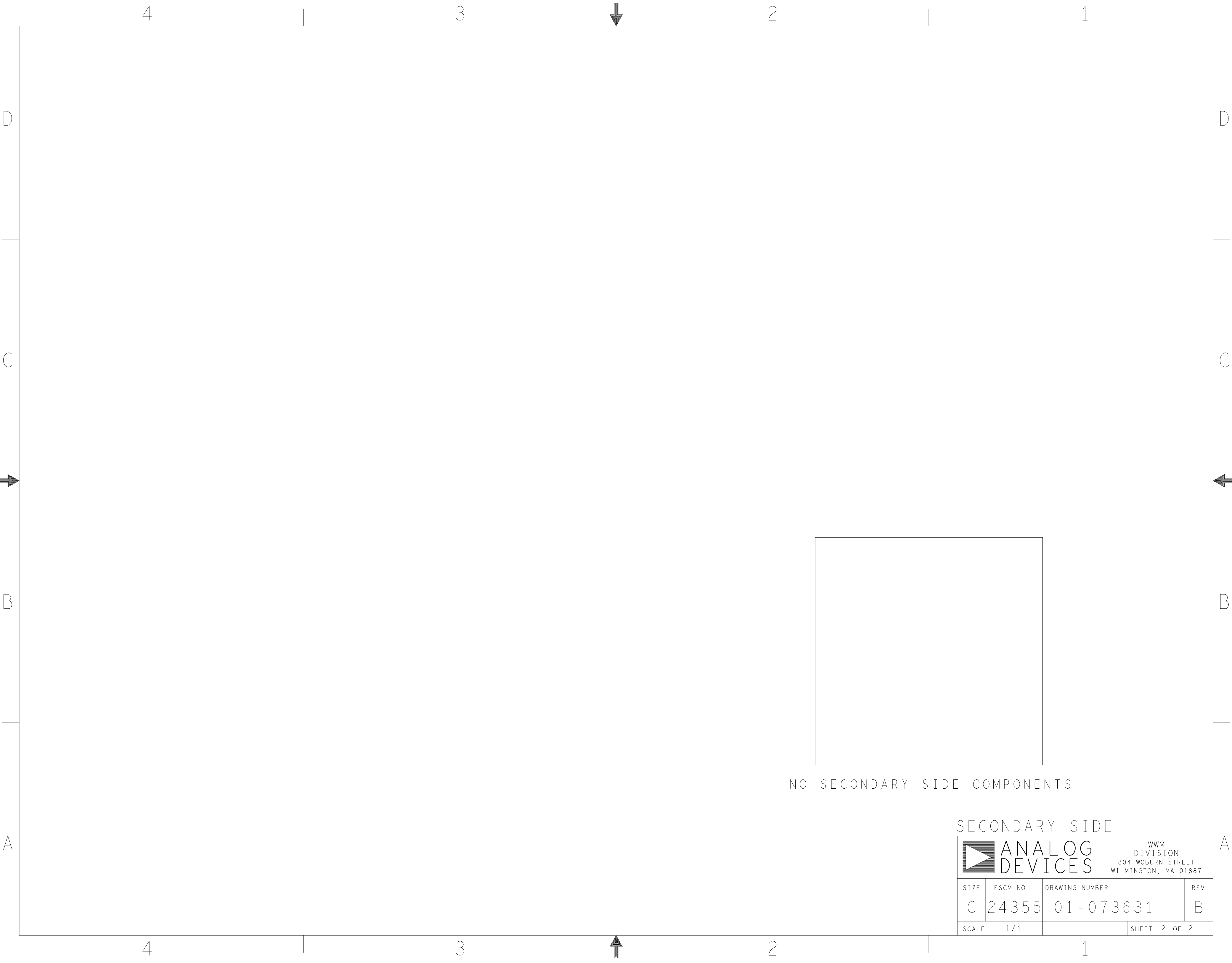



BANANA JACK : KEYSTONE 575-4



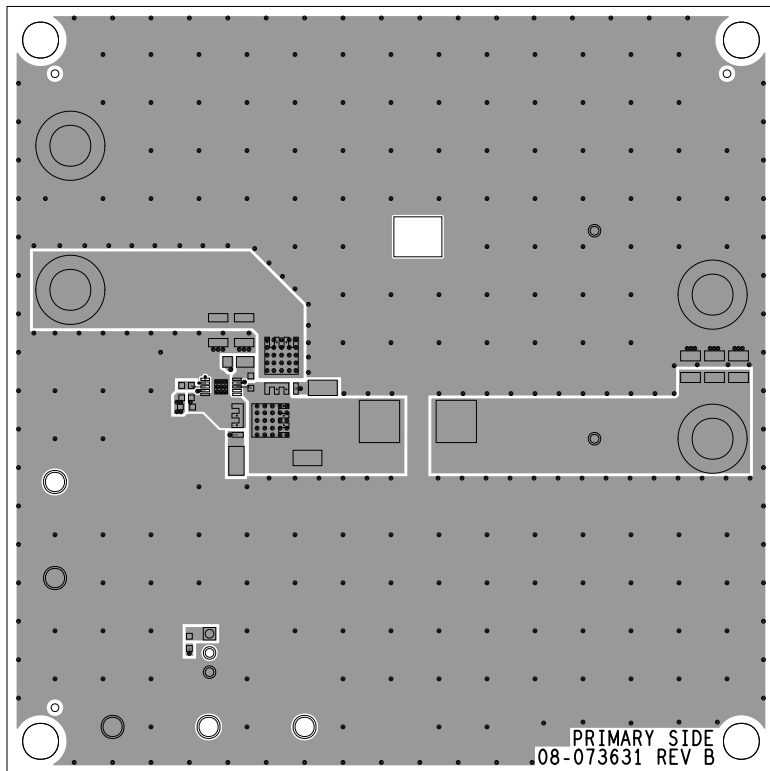
PRIMARY SIDE

UNLESS OTHERWISE SPECIFIED DIMENSIONS ARE IN INCHES			APPROVAL		DATE		<div><div></div><div>ANALOG DEVICES</div></div> <div>WWM DIVISION 804 WOBURN STREET WILMINGTON, MA 01887</div>					
TOLERANCES			TEMPLATE ENGINEER X		ddMMMyy		TITLE  ASSEMBLY  EVAL-LTC7068-AZ					
DECIMALS	FRACTIONS	ANGLES	HARDWARE SERVICES X		ddMMMyy							
.XX ±.010	±1/32	± 2	HARDWARE SYSTEMS X		ddMMMyy							
MATERIAL			TEST ENGINEER X		ddMMMyy							
			COMPONENT ENGINEER X		ddMMMyy							
			TEST PROCESS X		ddMMMyy							
			HARDWARE RELEASE X		ddMMMyy							
FINISH			DESIGNER K. CHAN		ddMMMyy		SIZE	FSCM NO	DRAWING NUMBER		REV	
			PTD ENGINEER X		ddMMMyy		C	24355	01-073631		B	
			CHECKER X		ddMMMyy							
DO NOT SCALE DWG							SCALE		1 / 1		SHEET 1 OF 2	

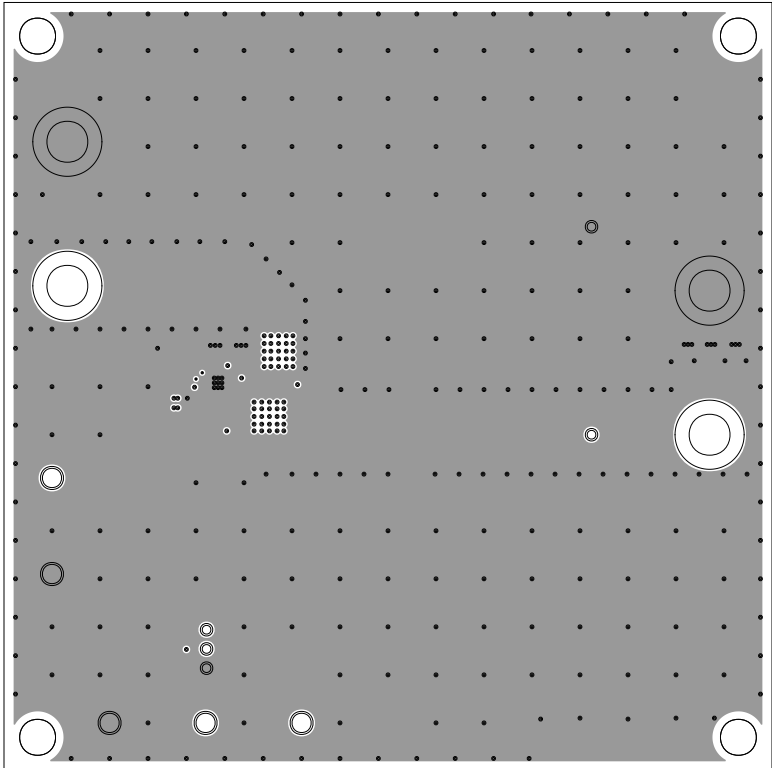


		ANALOG DEVICES		WWM DIVISION 804 WOBURN STREET WILMINGTON, MA 01887	
SIZE	FSCM NO	DRAWING NUMBER			REV
C	24355	01 - 073631			B
SCALE 1/1				SHEET 2 OF 2	

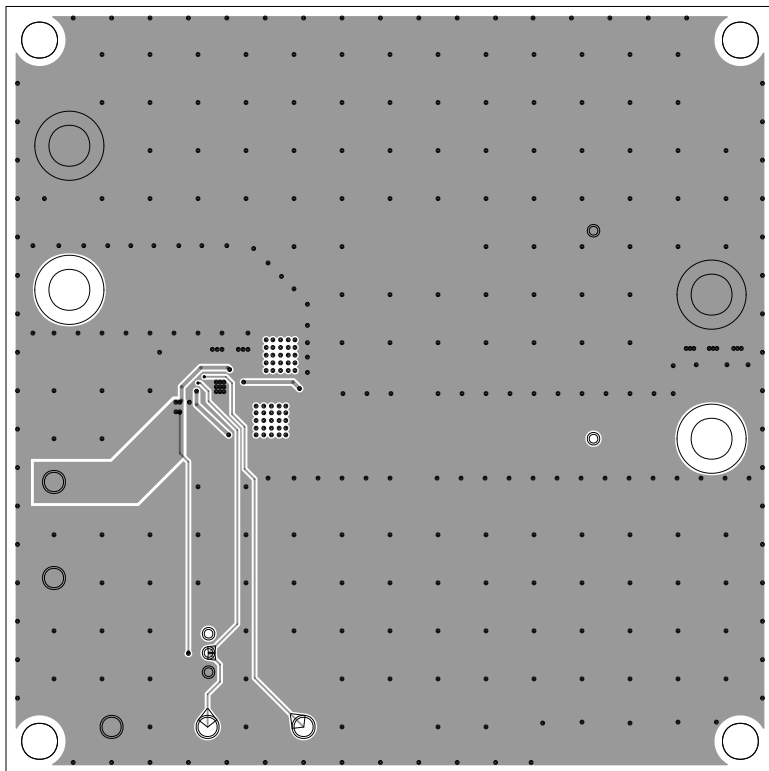
L1 PRIMARY  
08-073631-01  
REV B



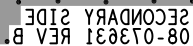
L2 GND  
08-073631-07  
REV B



L3 GND/SIGNAL  
08-073631-08  
REV B



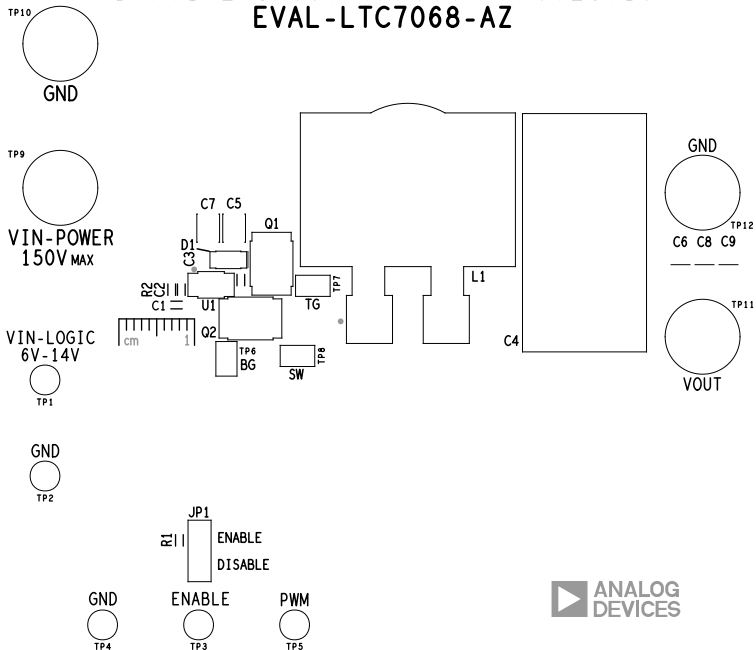
08-073631 REV B SECONDARY SIDE



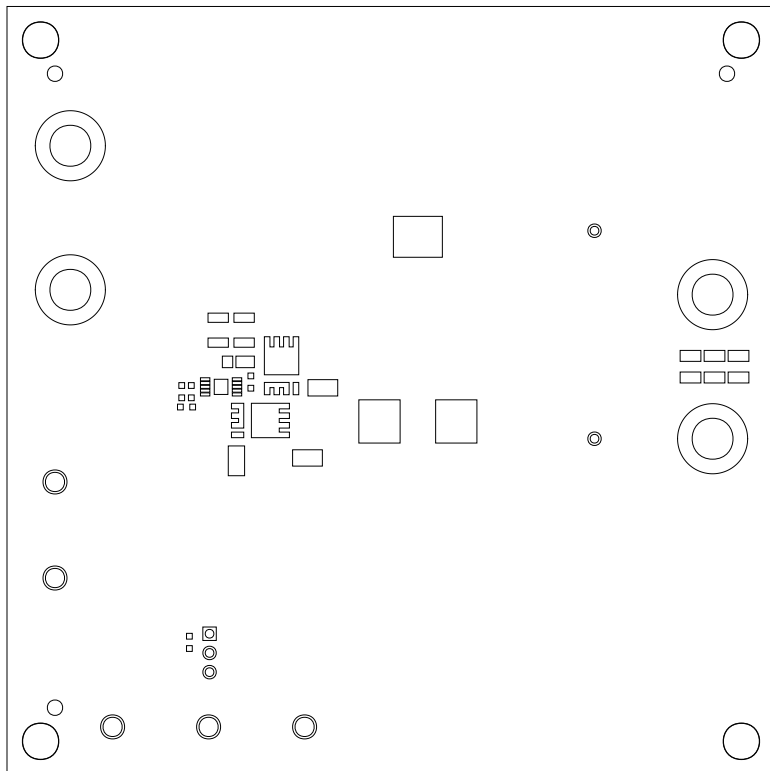


SILKSCREEN PRIMARY  
08-073631-03  
REV B

**LTC7068**  
**150V HALF-BRIDGE DRIVER WITH**  
**ADAPTIVE SHOOT-THROUGH PROTECTION**  
**EVAL-LTC7068-AZ**



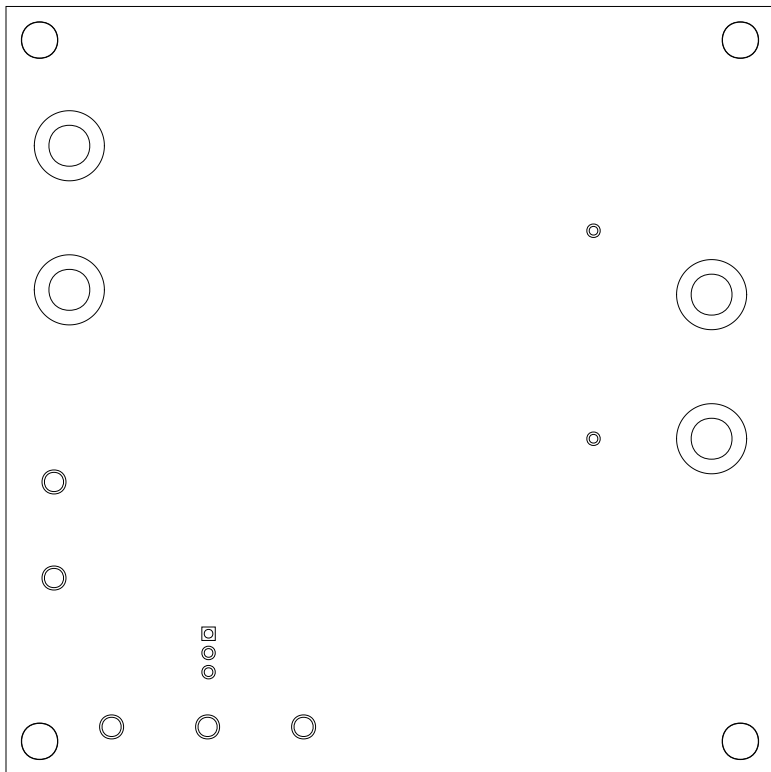
SOLDERMASK PRIMARY  
08-073631-04  
REV B



SILKSCREEN SECONDARY  
08-073631-05  
REV B



SOLDERMASK SECONDARY  
08-073631-06  
REV B



## A minimalist line drawing of a city skyline. The drawing is composed of various geometric shapes, including rectangles, squares, and irregular polygons, arranged to suggest a cityscape. The shapes are drawn with thin black lines on a white background. The skyline is centered in the upper half of the image, with a large, irregular shape at the top center, possibly representing a mountain or a large building. Below this, there are several smaller shapes, including a large rectangle with a smaller rectangle inside it, and a series of smaller rectangles and squares. To the right of the main skyline, there is a small cluster of three rectangles. In the bottom right corner, there is a small square. The overall impression is that of a quick, gestural sketch of a city.