

REVISIONS			
REV	DESCRIPTION	DATE	APPROVED
A	INITIAL RELEASE	13NOV24	X

HOLE TOLERANCE  
UNLESS SPECIFIED  
PLATED: +/- 3 MILS  
NON PLATED: +/- 2 MIL

DRILL CHART: TOP to BOTTOM				
ALL UNITS ARE IN MILS				
FIGURE	SIZE	PLATED	QTY	TOLERANCE/NOTES
.	6.0	PLATED	22	
.	10.0	PLATED	377	
△	45.0	PLATED	6	
□	185.0	NON-PLATED	4	

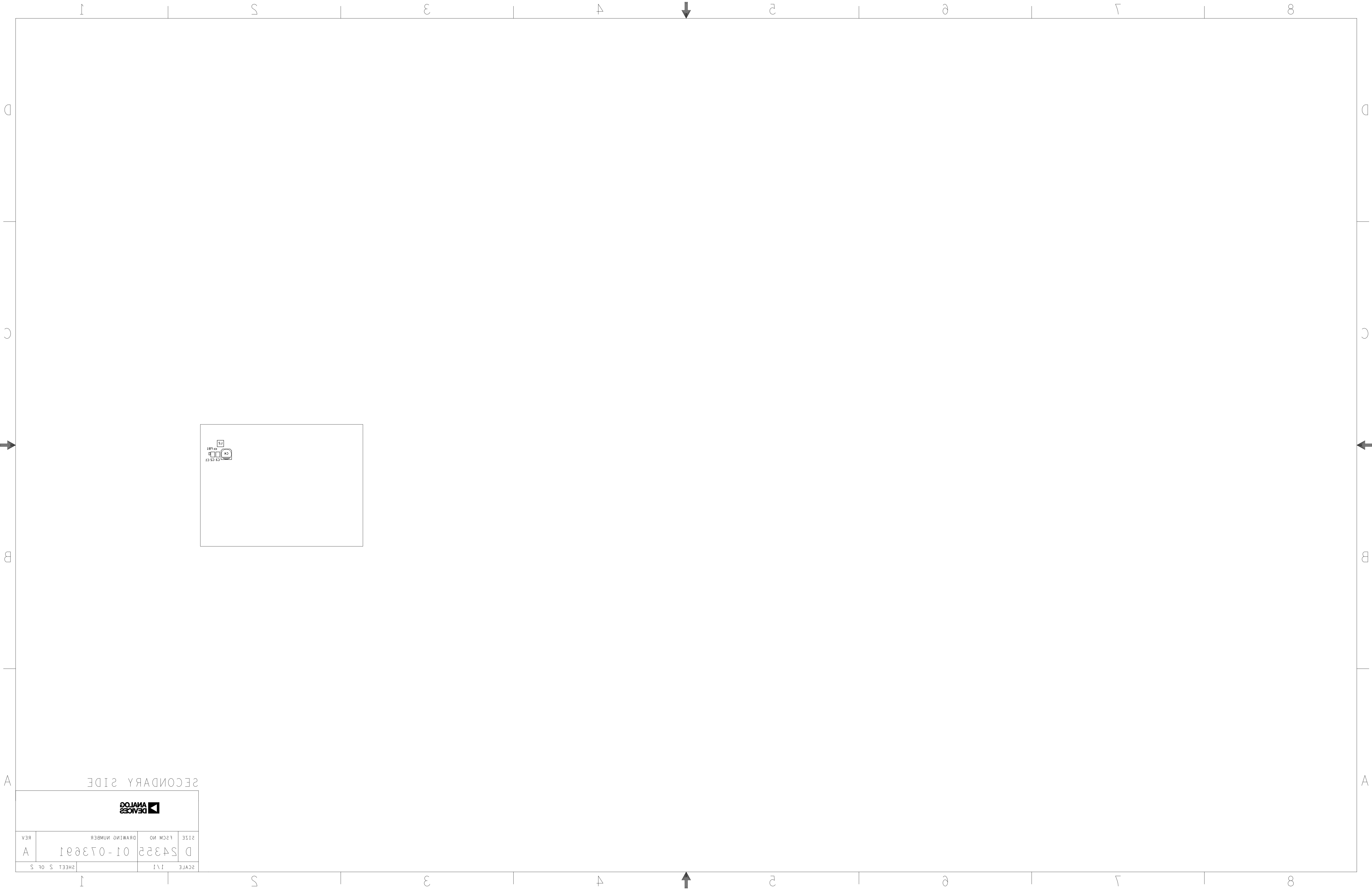
TOTAL HOLES: 409

PRIMARY SIDE				
UNLESS OTHERWISE SPECIFIED DIMENSIONS ARE IN INCHES TOLERANCES DECIMALS    FRACTIONS    ANGLES .XX    -.010    --1/32    -- 2 .XXX    -.005 .XXXX    -.0050	APPROVAL		DATE	
	TEMPLATE ENGINEER X		dMMMyy	
	HARDWARE SERVICES X		dMMMyy	
	HARDWARE SYSTEMS X		dMMMyy	
MATERIAL	TEST ENGINEER X		dMMMyy	
	COMPONENT ENGINEER X		dMMMyy	
	TEST PROCESS X		dMMMyy	
	HARDWARE RELEASE X		dMMMyy	
FINISH	DESIGNER X		dMMMyy	
	PTD ENGINEER X		dMMMyy	
	CHECKER X		dMMMyy	
DO NOT SCALE DWG				

<div><div></div><div>ANALOG DEVICES</div></div>				
TITLE FABRICATION EVAL-LT83205-AZ				
SIZE C	FSCM NO 24355	DRAWING NUMBER 09 - 073691		REV A
SCALE 1 / 1		SHEET    1 OF    2		







SCALE 1:1				SHEET 5 OF 5	
D	S4322	DRAWING NUMBER 01-073691		REV	A
SIZE		P&CM NO.		REV	

SECONDARY SIDE



# SILKSCREEN PRIMARY

08-073691-03

REV A

LT83205

18V, 5A SILENT SWITCHER 3 WITH LOW NOISE REFERENCE

EVAL-LT83205-AZ

VIN\_EMI

GND

GND

C5

VIN  
2.8V-18V

VIN SENSE

GND SENSE

J5  
VIN SENSE

GND SENSE

VO SENSE

VOUT  
1V/5A

L3  
R13

C20  
C21  
C22  
C23  
R10

J4  
C24

GND

VO SENSE

L1  
C9 C8  
C16 C17  
C10 C14  
C11 C13  
R6 R3  
VC  
C12 R8  
R5 R7  
R12 R9  
R11

cm

1 JP1  
6 FCM  
PULSE SKIP MODE  
2 SYNC

R1  
R2  
EN

5 SYNC

PG R14



# SILKSCREEN PRIMARY

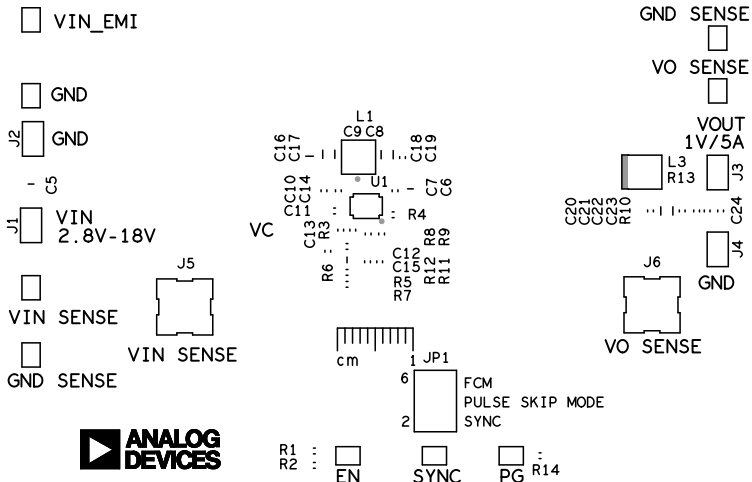
08-073691-03

REV A

LT83205

18V, 5A SILENT SWITCHER 3 WITH LOW NOISE REFERENCE

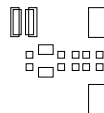
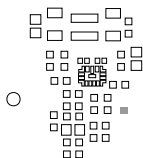
EVAL-LT83205-AZ



SOLDERMASK PRIMARY

08-073691-04

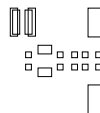
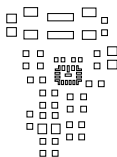
REV A



PASTEMASK PRIMARY

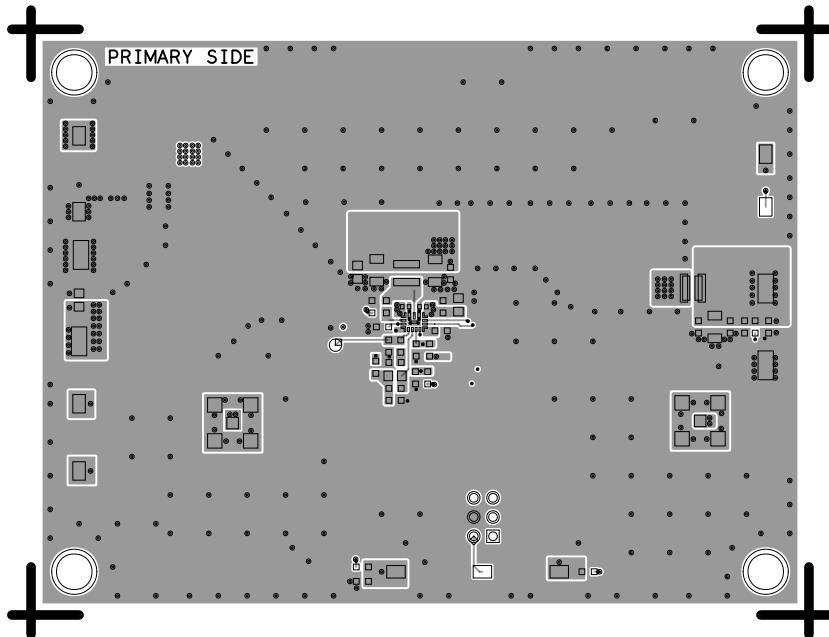
08-073691-13

REV A





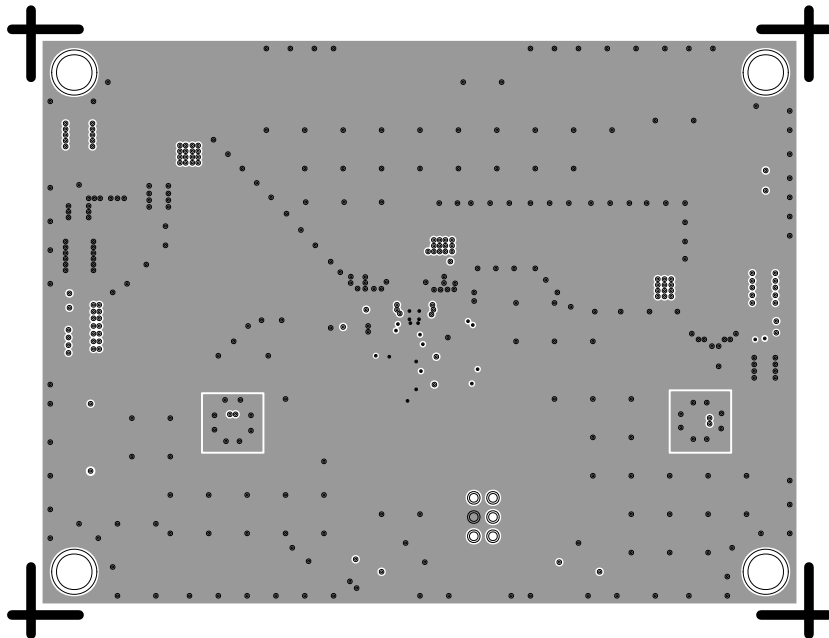
L1 PRIMARY  
08-073691-01  
REV A



L2 - SIGNAL / GND

08-073691-07

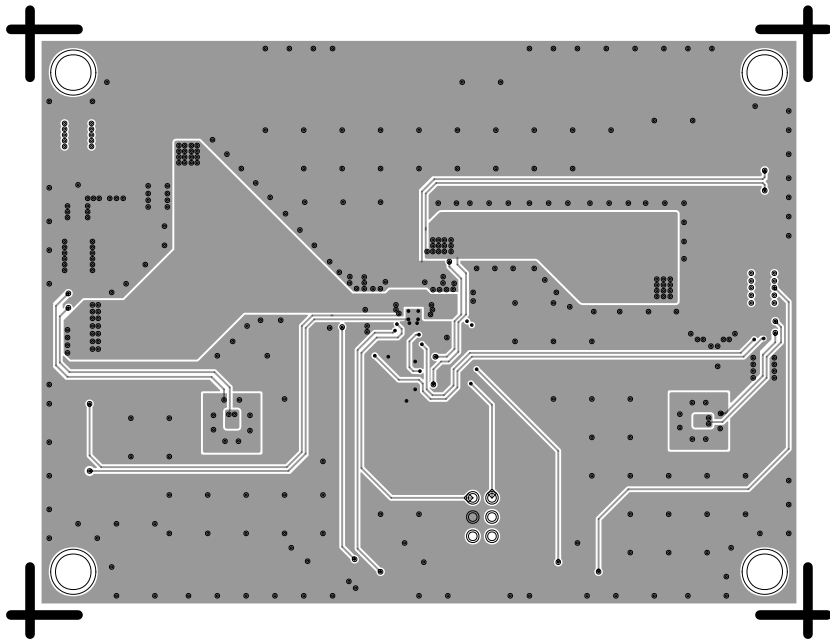
REV A



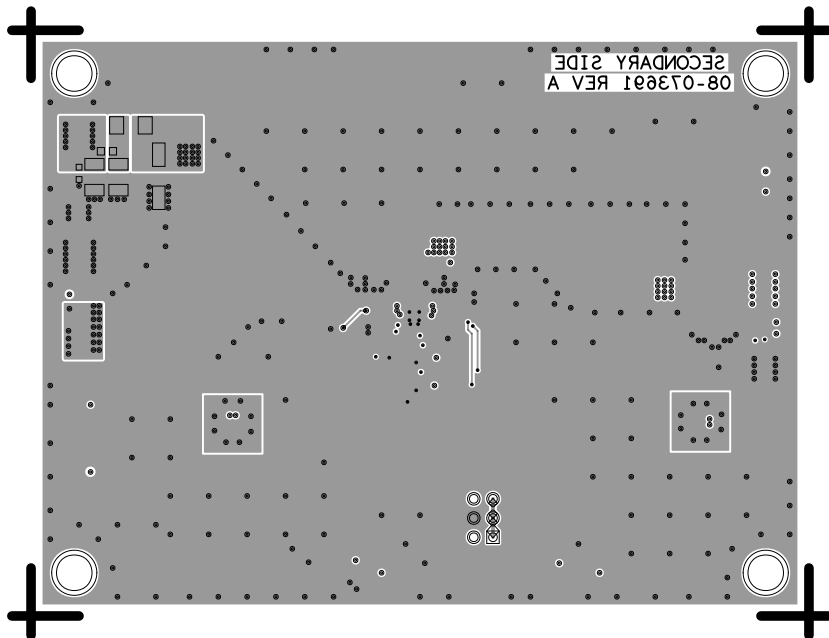
L3 - SIGNAL / GND

08-073691-08

REV A



L4 SECONDARY  
08-073691-02  
REV A



SOLDERMASK SECONDARY

08-073691-06

REV A



PASTEMASK SECONDARY

08-073691-14

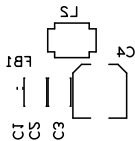
REV A



SILKSCREEN SECONDARY

08-073691-05

REV A



SILKSCREEN SECONDARY

08-073691-05

REV A

