

REVISIONS			
REV	DESCRIPTION	DATE	APPROVED
A	INITIAL RELEASE	20NOV2024	X

HOLE TOLERANCE

UNLESS SPECIFIED

PLATED: +/- 3 MILS

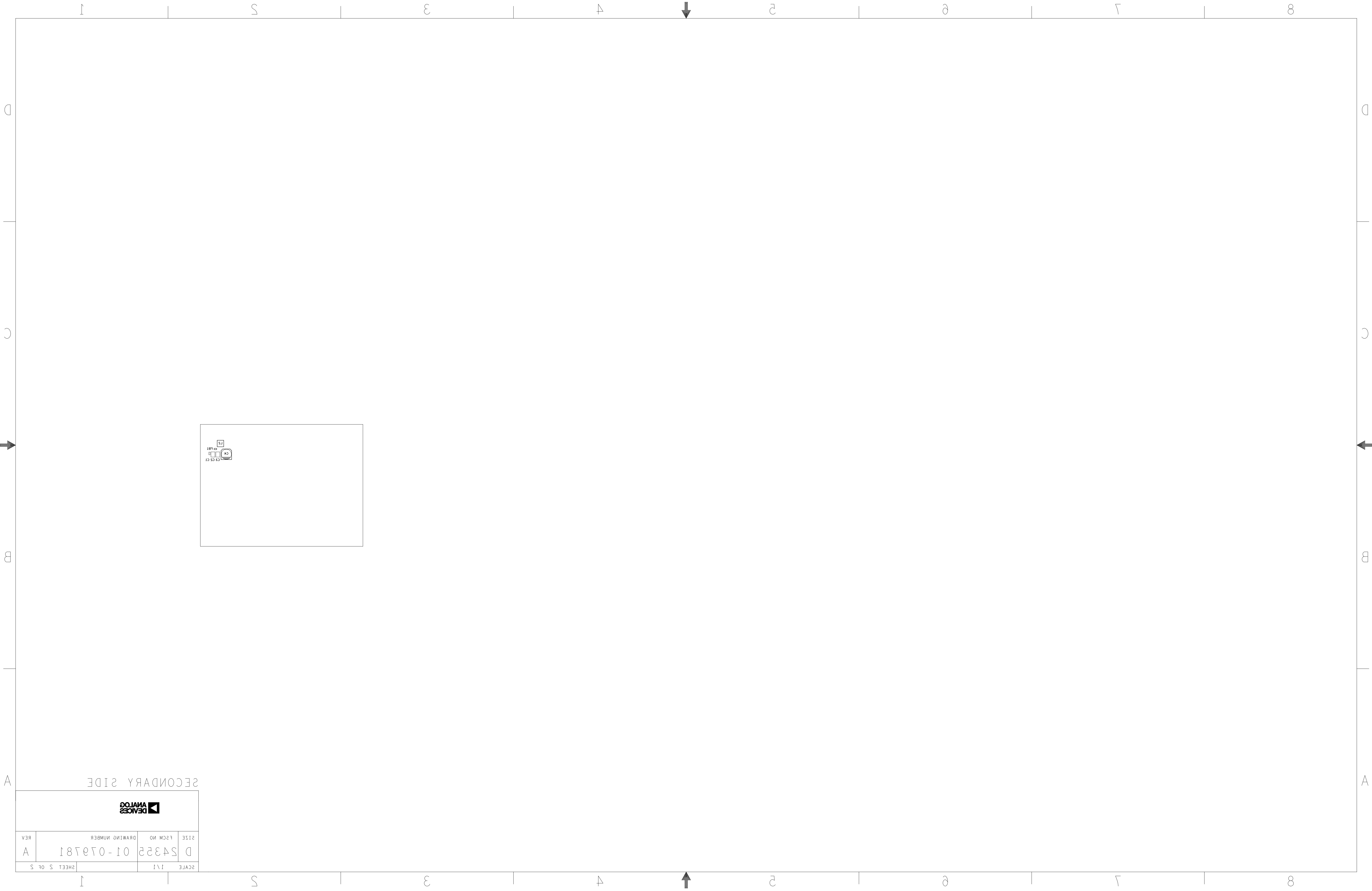
NON PLATED: +/- 2 MIL

DRILL CHART: TOP to BOTTOM				
ALL UNITS ARE IN MILS				
FIGURE	SIZE	PLATED	QTY	TOLERANCE/NOTES
+	6.0	PLATED	23	
○	10.0	PLATED	386	
◇	45.0	PLATED	6	
□	185.0	NON-PLATED	4	

TOTAL HOLES: 419

PRIMARY SIDE

UNLESS OTHERWISE SPECIFIED DIMENSIONS ARE IN INCHES TOLERANCES DECIMALS FRACTIONS ANGLES .XX -.010 --1/32 -- 2 .XXX -.005 .XXX -.0050	APPROVAL		DATE		<div><div></div><div>ANALOG DEVICES</div></div> <div>TITLE</div> <div>FABRICATION</div> <div>EVAL-LT83203-AZ</div>				
	TEMPLATE ENGINEER X		ddMMMyy						
	HARDWARE SERVICES X		ddMMMyy						
	HARDWARE SYSTEMS X		ddMMMyy						
MATERIAL	TEST ENGINEER X		ddMMMyy		SIZE				
	COMPONENT ENGINEER X		ddMMMyy						
	TEST PROCESS X		ddMMMyy						
	HARDWARE RELEASE X		ddMMMyy						
FINISH	DESIGNER X		ddMMMyy		FSCM NO		DRAWING NUMBER		REV
	PTD ENGINEER X		ddMMMyy						
	CHECKER X		ddMMMyy						
DO NOT SCALE DWG				SCALE		1/1		SHEET 1 OF 2	



DEVICES ANANTOG			
SCALE	1:1	2:1	3:1
DRAWING NUMBER	01-070781	REV	A

SECONDARY SIDE

SILKSCREEN PRIMARY

08-079781-03

REV A

LT83203

18V 3A SILENT SWITCHER 3 WITH LOW NOISE REFERENCE

EVAL-LT83203-AZ



VIN_EMI



GND



GND



C5



VIN
2.8V-18V



VIN SENSE



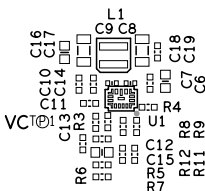
GND SENSE



VIN SENSE



**ANALOG
DEVICES**



cm

1 JP1

6

FCM

PULSE SKIP MODE

2 SYNC

R1

R2

EN

EN

SYNC

SYNC

PG

PG

R14

R14

GND SENSE



VO SENSE



VOUT

1V/3A



J3



C24



J4



GND



VO SENSE

SILKSCREEN PRIMARY

08-079781-03

REV A

LT83203

18V 3A SILENT SWITCHER 3 WITH LOW NOISE REFERENCE

EVAL-LT83203-AZ

VIN_EMI

GND

J2 GND

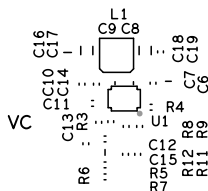
C5

J1 VIN
2.8V-18V

VIN SENSE

GND SENSE

J5
VIN SENSE



cm

JP1
6
2

FCM
PULSE SKIP MODE
SYNC

R1 :
R2 :
EN

SYNC

PG :
R14

GND SENSE

VO SENSE

VOUT

1V/3A

L3
R13 J3

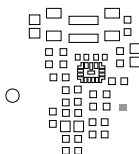
C20
C21
C22
C23
R10
C24

J4

GND

J6
VO SENSE

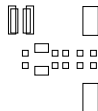
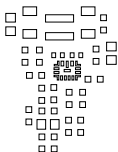
SOLDERMASK PRIMARY
08-079781-04
REV A



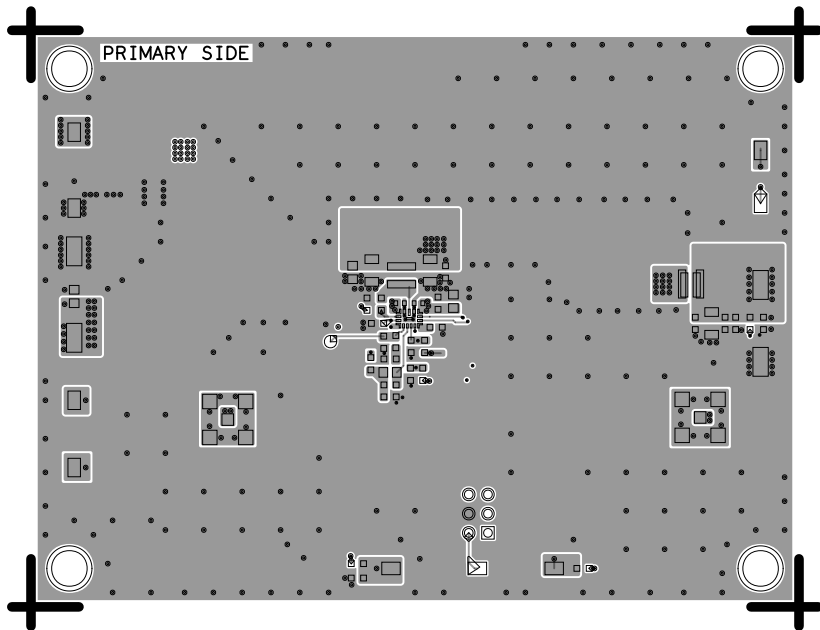
PASTEMASK PRIMARY

08-079781-13

REV A



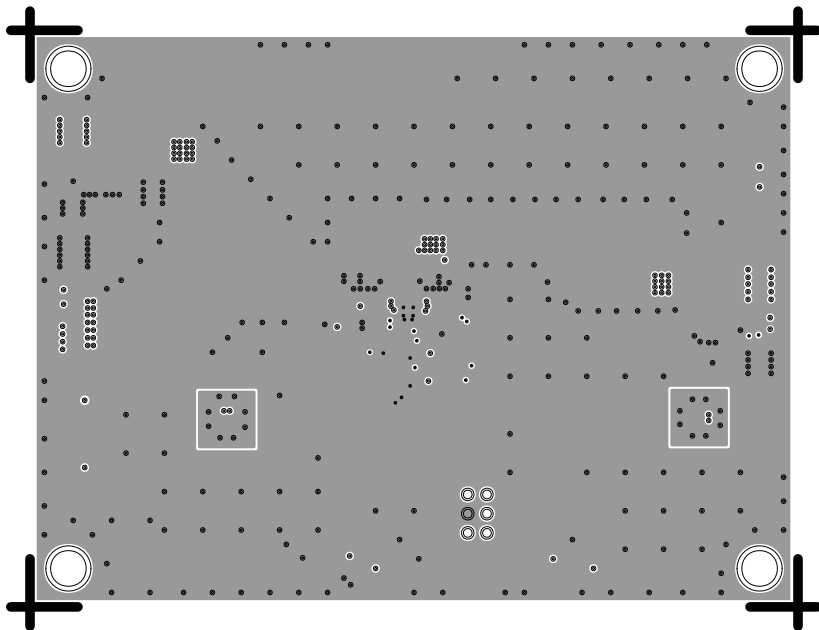
L1 PRIMARY
08-079781-01
REV A



L2 - SIGNAL / GND

08-079781-07

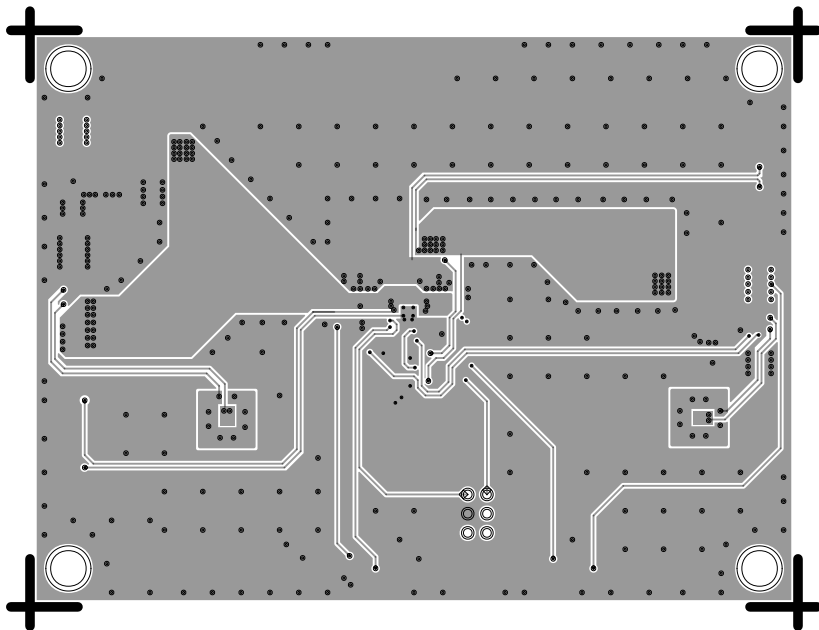
REV A



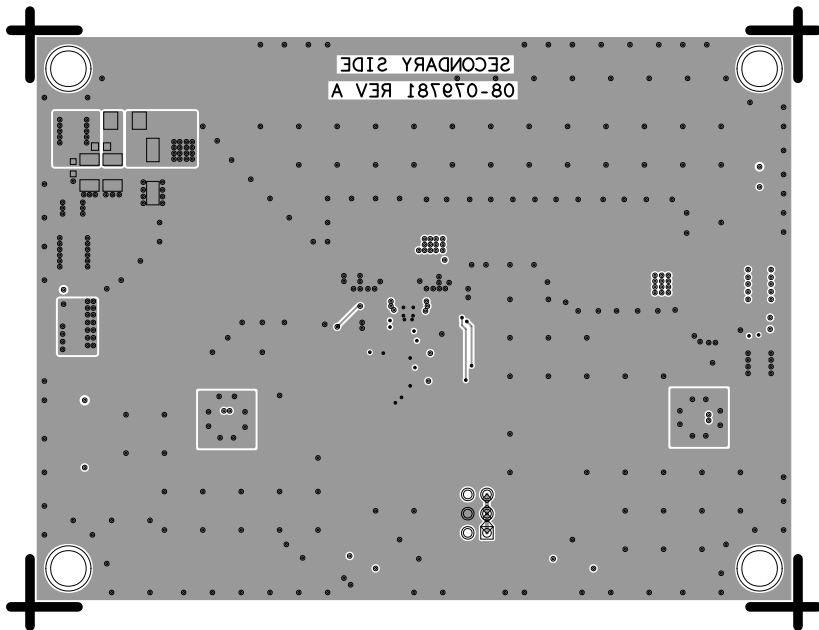
L3 - SIGNAL / GND

08-079781-08

REV A



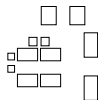
L4 SECONDARY
08-079781-02
REV A



SOLDERMASK SECONDARY

08-079781-06

REV A



PASTEMASK SECONDARY

08-079781-14

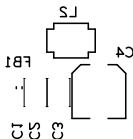
REV A



SILKSCREEN SECONDARY

08-079781-05

REV A



19L 2
a
5



SILKSCREEN SECONDARY

08-079781-05

REV A

