

REVISIONS			
REV	DESCRIPTION	DATE	APPROVED
B	ECR-116464	12Aug23	X

ASSEMBLY NOTES:

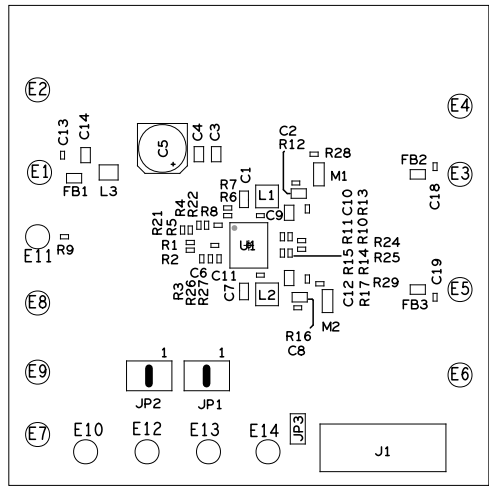
- BOARD ACCEPTABILITY PER ANALOG DEVICES, INC. SPECIFICATION TST00119 (LATEST REVISION).
- REPAIRS PER IPC-7711/21(LATEST REVISION) ARE ALLOWED.
- REPAIRS ARE NOT ALLOWED IN SOLDERMASK FREE AREAS ON EITHER SIDE OF THE BOARD.
- INSTALL SHUNTS AS SHOWN ON ASSEMBLY DRAWING.
- INSTALL TURRETS AS SHOWN BELOW:



- TEST POINTS SHOULD BE FREE OF SOLDER.
- INSTALL THE FOLLOWING SHUNS.

JP1: PIN3 & PIN4.

JP2: PIN3 & PIN4.



PRIMARY SIDE

UNLESS OTHERWISE SPECIFIED DIMENSIONS ARE IN INCHES TOLERANCES DECIMALS FRACTIONS ANGLES .XX .010 .1/32 .2 .XXX .005 .XXXX .0050	APPROVAL	DATE	<div><div></div><div>ANALOG DEVICES</div><div>WWM DIVISION 804 WOBUEN STREET WILMINGTON, MA 01887</div></div> <div>TITLE ASSEMBLY 36V SYNCHRONOUS DUAL LED DRIVER WITH I²C</div>			
	TEMPLATE ENGINEER X	ddMMMyy				
	HARDWARE SERVICES X	ddMMMyy				
	HARDWARE SYSTEMS X	ddMMMyy				
	TEST ENGINEER X	ddMMMyy				
MATERIAL	COMPONENT ENGINEER X	ddMMMyy	SIZE D	FSCM NO 24355	DRAWING NUMBER 01-072443	REV B
	TEST PROCESS X	ddMMMyy				
	HARDWARE RELEASE X	ddMMMyy				
	DESIGNER X	ddMMMyy				
FINISH	PID ENGINEER X	ddMMMyy	SCALE 1/1	SHEET 1 OF 1		
	CHECKER X	ddMMMyy				
	DO NOT SCALE DWG					