

REVISIONS			
REV	DESCRIPTION	DATE	APPROVED
A	INITIAL RELEASE	23JUL21	K. GAGNE
B	CHANGES PER ECR-106613	21MAR22	K. GAGNE
C	CHANGES PER ECR-110081	29NOV22	R. WHITNEY
D	CHANGES PER ECR-113667	03APR23	R. WHITNEY

ASSEMBLY NOTES:

1. BOARD ACCEPTABILITY PER ANALOG DEVICES, INC. SPECIFICATION TST00119 (LATEST REVISION).
2. REPAIRS PER IPC-7711/21(LATEST REVISION) ARE ALLOWED.
3. REPAIRS ARE NOT ALLOWED IN SOLDERMASK FREE AREAS ON EITHER SIDE OF THE BOARD.
4. RoHS COMPLIANCE: ASSEMBLY VENDOR SHOULD ASSURE COMPLIANCE WITH LEAD-FREE AND RoHS PCB ASSEMBLY STANDARDS (EU RoHS DIRECTIVE 2002/95/EC).
5. U11 IS A DEVICE-SOCKET COMBO AND FOLLOWS THIS SOLDERPASTE INSTRUCTION:

SUPPLIED PART	INSTALLED PART	PASTEMASK
U11(SOCKET)	INSTALLED SOCKET	NO PASTEMASK
U11(DEVICE)	INSTALLED DUT	PASTEMASK
6. BOARD ASSEMBLY SPECIAL NOTES: (IN ORDER TO MINIMIZE MIC DEVICES (U1-U4) DAMAGE)

A. DO NOT BOARD WASH OR CLEAN AFTER THE REFLOW PROCESS.

B. DO NOT BRUSH BOARD WITH OR WITHOUT SOLVENTS AFTER THE REFLOW PROCESS.

C. DO NOT DIRECTLY EXPOSE TO ULTRASONIC PROCESSING, WELDING, OR CLEANING.

D. DO NOT INSERT ANY OBJECT IN PORT HOLE OF DEVICE AT ANY TIME.

E. DO NOT APPLY OVER 30 PSI OF AIR PRESSURE INTO THE PORT HOLE.

F. DO NOT PULL A VACUUM OVER PORT HOLE OF THE MICROPHONE.

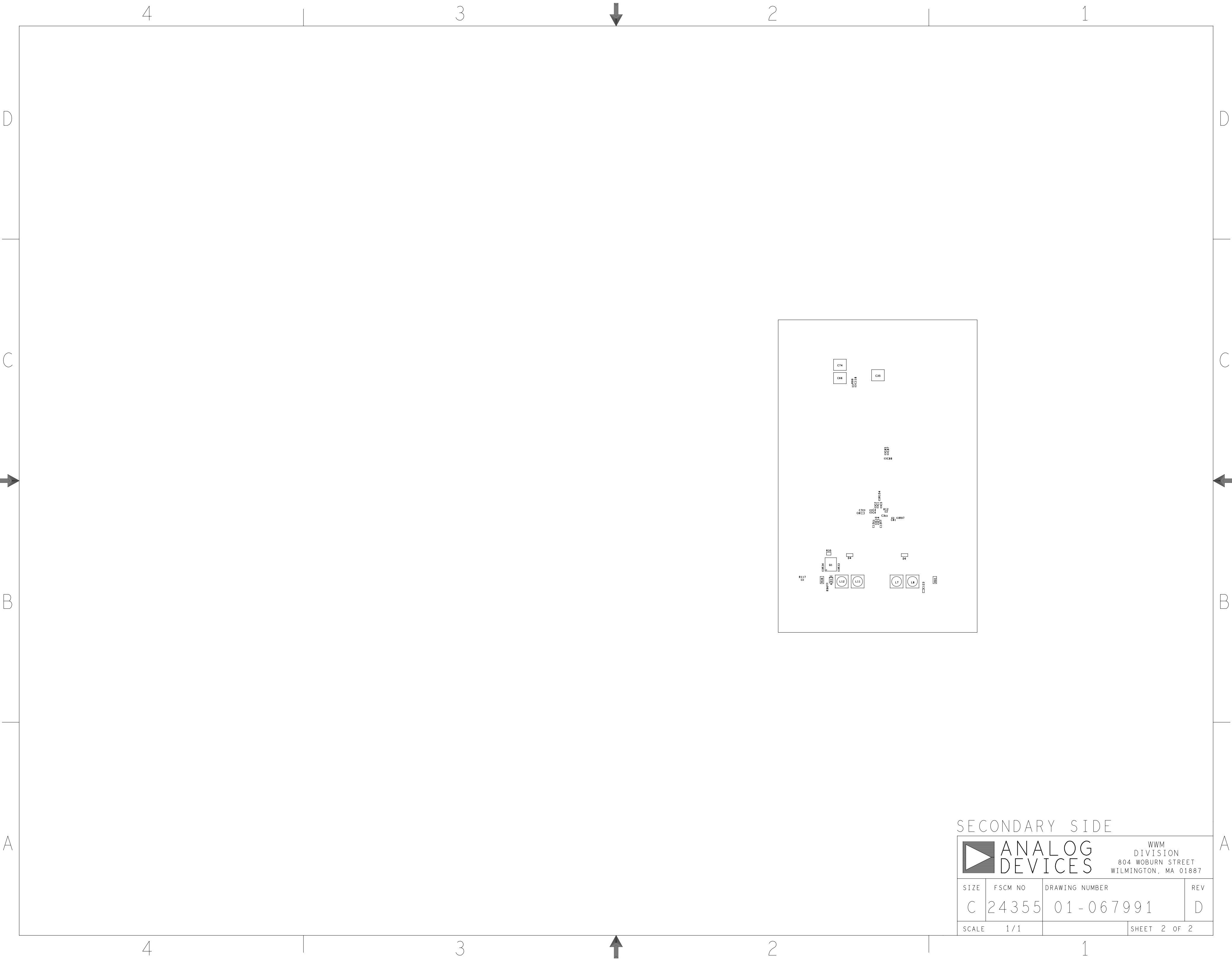
G. DO NOT APPLY A VACUUM WHEN REPACKING INTO SEALED BAGS AT A RATE FASTER THAN 0.5 ATM/SEC.
7. BOARDS TO BE SHIPPED SINGULATED AFTER ASSEMBLY PROCESS. SMOOTHEN EDGES AND FREE FROM BURRS AFTER DEPANELIZATION PROCESS.

PRIMARY SIDE

UNLESS OTHERWISE SPECIFIED DIMENSIONS ARE IN INCHES	APPROVAL	DATE	TITLE	
TOLERANCES	TEMPLATE ENGINEER N/A	N/A	ASSEMBLY	
DECIMALS FRACTIONS ANGLES	HARDWARE SERVICES M. VALE	23JUL21	EVAL - AD2437WB1NZ	
.XX --.010 --1/32 -- 2	HARDWARE SYSTEMS		CUSTOMER EVALUATION Z	
.XXX --.005				
.XXXX --.0050				
MATERIAL	TEST ENGINEER			
	COMPONENT ENGINEER M. YAN	23JUL21		
	TEST PROCESS			
	HARDWARE RELEASE K. JABATAN	23JUL21		
FINISH	DESIGNER M. VICEDO	23JUL21	SIZE	FSCM NO
	PTD ENGINEER K. GAGNE	23JUL21	C 24355	01-067991
	CHECKER		DRAWING NUMBER	REV
DO NOT SCALE DWG			SCALE 1/1	SHEET 1 OF 2

ANALOG DEVICES

WWM
DIVISION
804 WOBURN STREET
WILMINGTON, MA 01887



SECONDARY SIDE

<div><div></div><div>ANALOG DEVICES</div></div> <div>WWM DIVISION 804 WOBURN STREET WILMINGTON, MA 01887</div>			
SIZE	FSCM NO	DRAWING NUMBER	REV
C	24355	01-067991	D
SCALE	1 / 1	SHEET 2 OF 2	