

8

7

6

5

4

3

2

1

THIS DRAWING IS THE PROPERTY OF ANALOG DEVICES INC. IT IS NOT TO BE REPRODUCED OR COPIED, IN WHOLE OR IN PART, OR USED IN FURNISHING INFORMATION TO OTHERS, OR FOR ANY OTHER PURPOSE DETRIMENTAL TO THE INTERESTS OF ANALOG DEVICES. THE EQUIPMENT SHOWN HEREON MAY BE PROTECTED BY PATENTS OWNED OR CONTROLLED BY ANALOG DEVICES.

REVISIONS			
REV	DESCRIPTION	DATE	APPROVED
A	INITIAL RELEASE	21MAR22	R. WHITNEY
B	CHANGES AS PER ECR-109842	24OCT22	R. WHITNEY
C	CHANGES AS PER ECR-115080	10AUG23	R. WHITNEY

D

C

B

A

EVAL-AD2437B1MZ

BUS-POWERED SUB-NODE AD2437 CUSTOMER EVALUATION BOARD

P.O SPEC.	BK/BD SPEC.	SOCKET OEM	OEM PART#	HANDLER

8

7

6

5

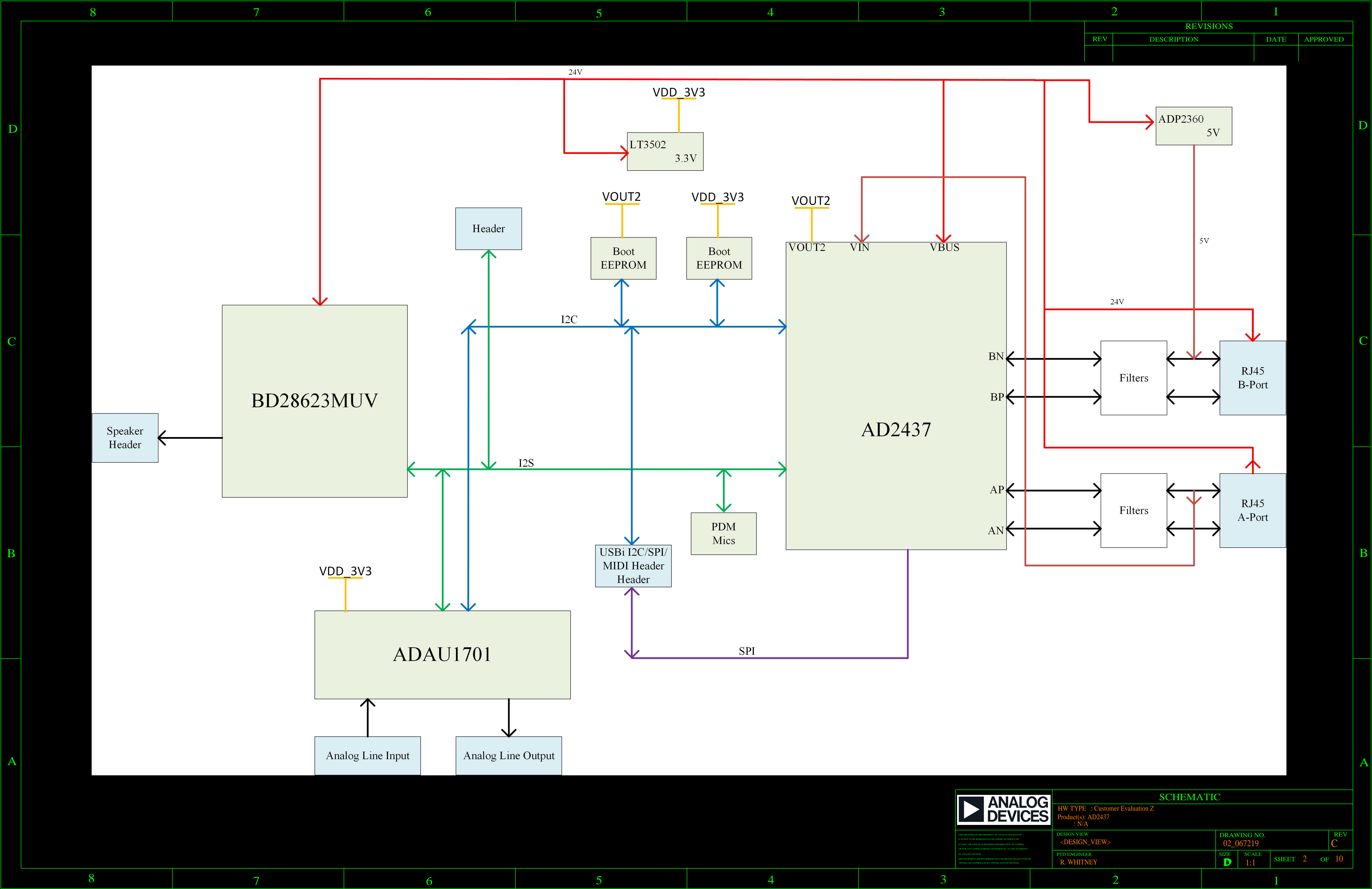
4

3

2

1

TEMPLATE ENGINEER	DATE	SCHEMATIC							
HARDWARE SERVICES									
HARDWARE SYSTEMS									
TEST ENGINEER									
COMPONENT ENGINEER		HW TYPE : Customer Evaluation Z Product(s): AD2437 : N/A  PACKAGE : LeadCount-lead BodySize PackageType-family : Pitch-pitch StyleVendor Style  <User Define> <User Define> <User Define>							
TEST PROCESS									
HARDWARE RELEASE									
DESIGNER									
PTD ENGINEER		MASTER PROJECT TEMPLATE	TESTER TEMPLATE	DRAWING NO.	REV.				
CHECKER		TOLERANCES							
		DECIMALS	FRACTIONS	ANGLES	SIZE	SCALE	CODE ID-NO	SHEET	OF
		X.XX +0.010	+/-1/32	+2	D	1:1	CodeID	1	10



THIS DRAWING IS THE PROPERTY OF ANALOG DEVICES INC.  
IT IS LOANED TO THE CUSTOMER UNDER CONTRACT. IT IS NOT TO BE  
REPRODUCED OR TRANSMITTED IN ANY FORM OR BY ANY MEANS,  
ELECTRONIC OR MECHANICAL, INCLUDING PHOTOCOPYING, RECORDING,  
OR BY ANY INFORMATION STORAGE AND RETRIEVAL SYSTEM, WITHOUT  
THE WRITTEN PERMISSION OF ANALOG DEVICES.

HW TYPE : Customer Evaluation Z  
Product(s): AD2437  
: N/A

DESIGN VIEW  
<DESIGN\_VIEW>  
PTD ENGINEER  
R. WHITNEY

DRAWING NO.

02\_067219

REV

C

SIZE

D

SCALE

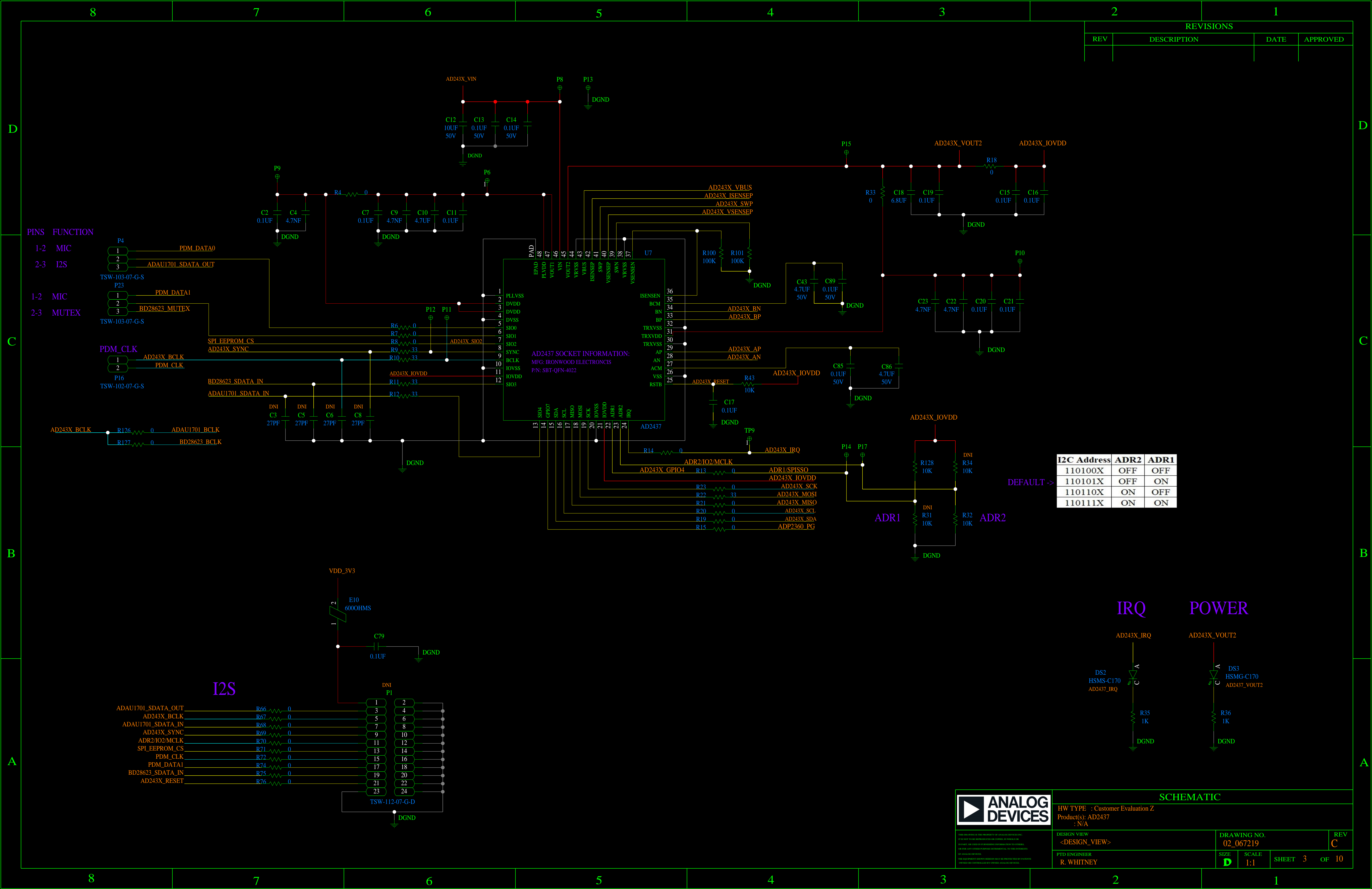
1:1

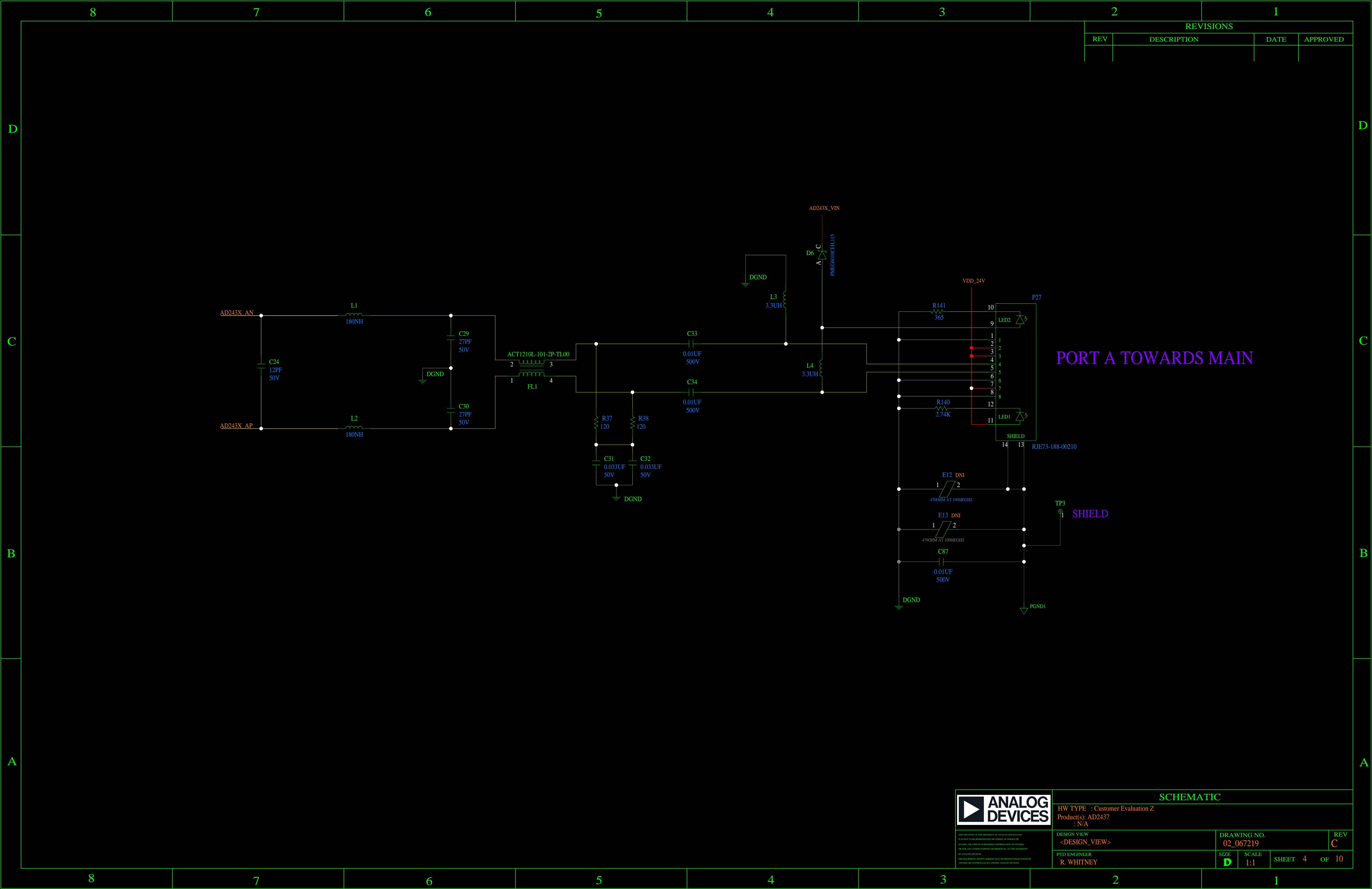
SHEET

2

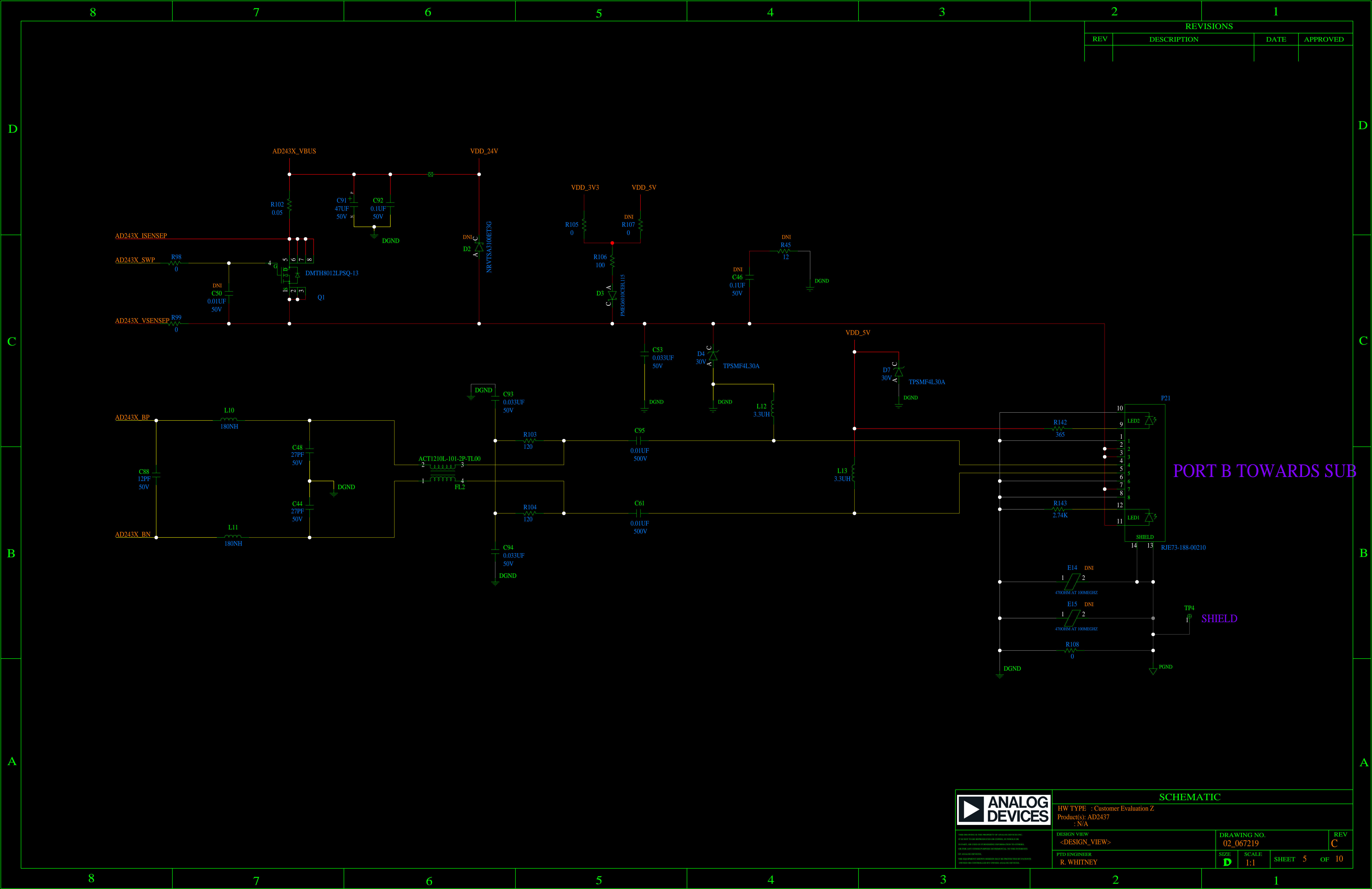
OF

10





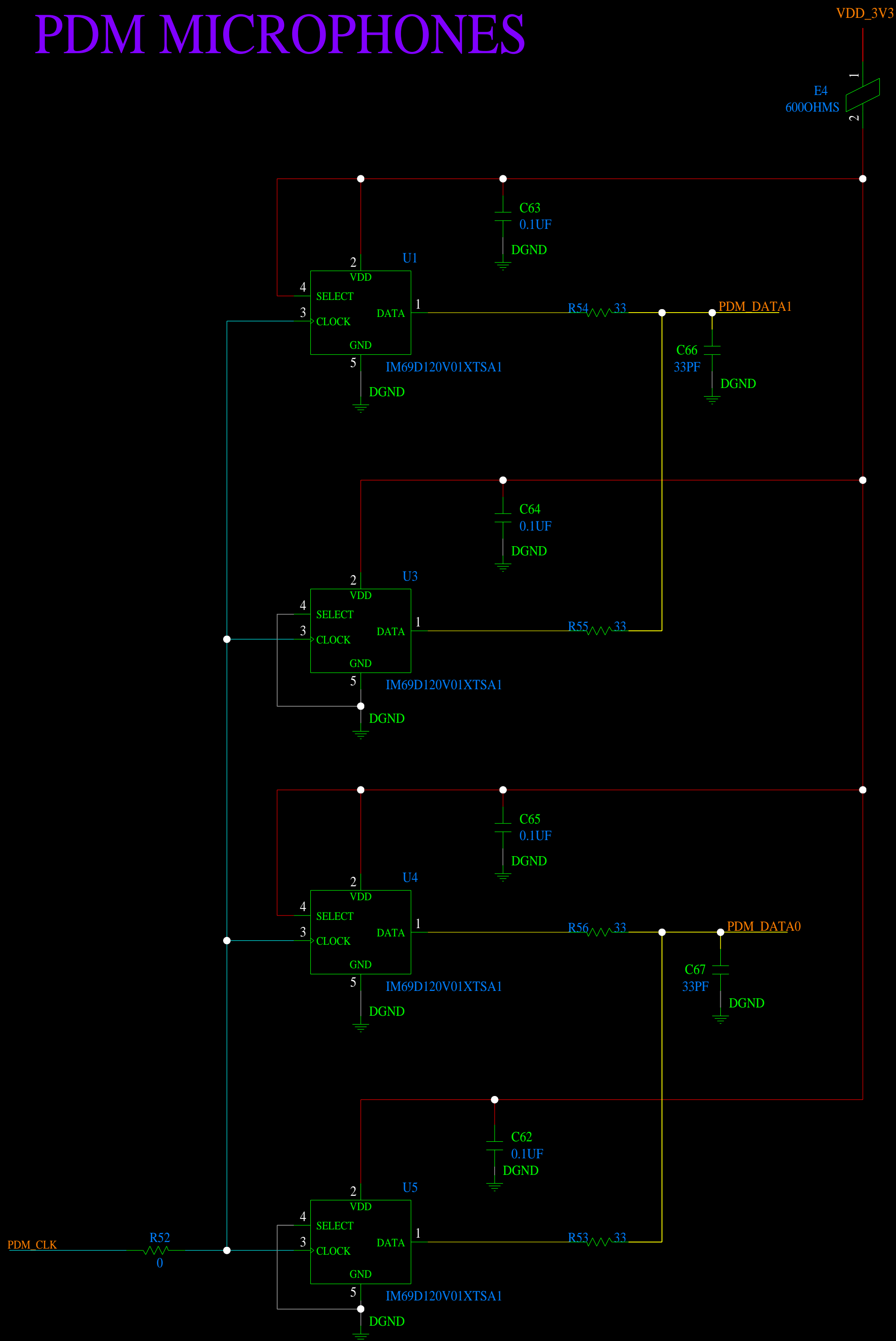






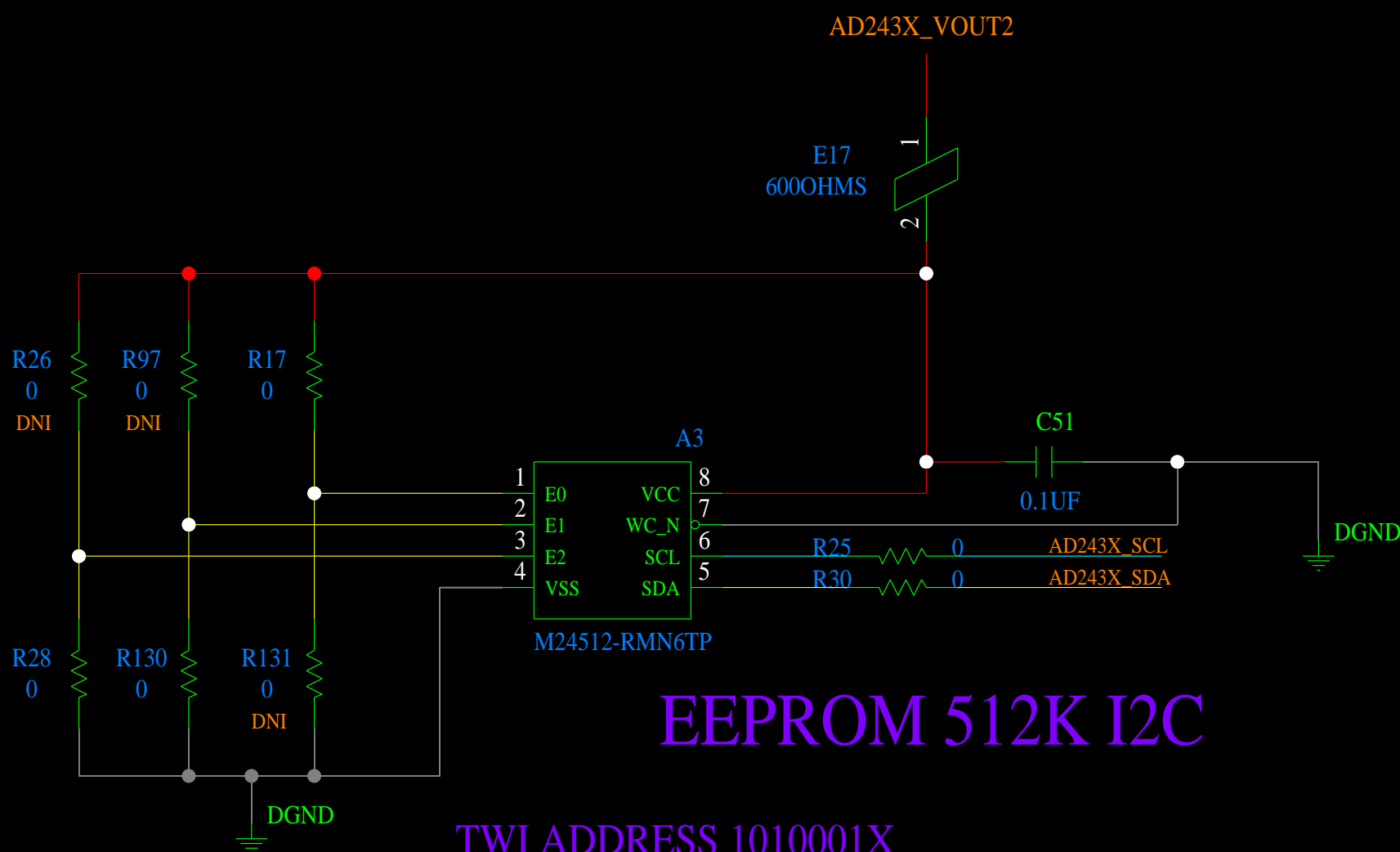


PDM MICROPHONES



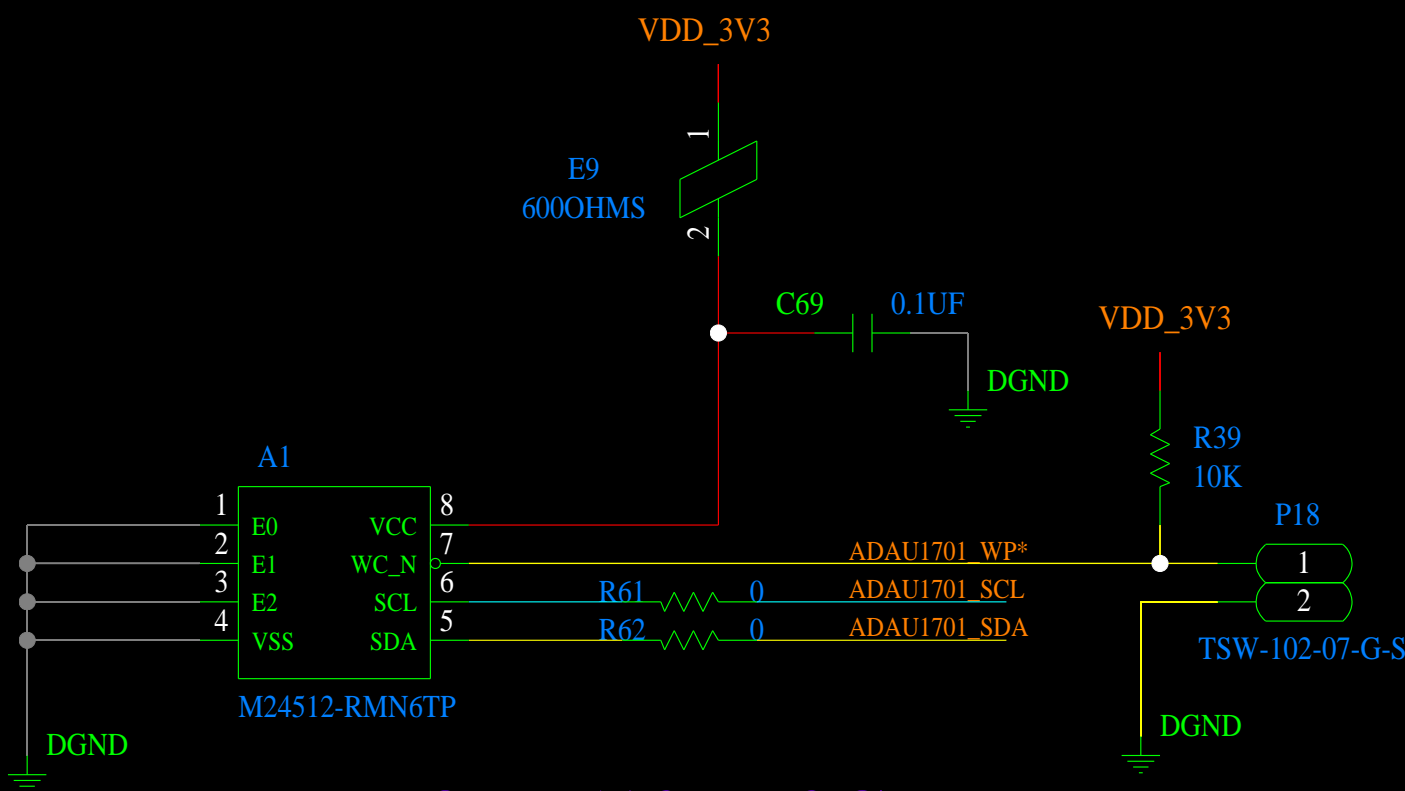
EEPROM 512K I2C

TWI ADDRESS 1010001X  
X IS THE R/W BIT. READ - 1, WRITE - 0



EEPROM 512K I2C

TWI ADDRESS 1010000X  
X IS THE R/W BIT. READ - 1, WRITE - 0



THIS DRAWING IS THE PROPERTY OF ANALOG DEVICES INC.  
IT IS LOANED TO THE CUSTOMER UNDER CONTRACT. IT IS NOT TO BE  
REPRODUCED OR TRANSMITTED IN ANY FORM OR BY ANY MEANS,  
ELECTRONIC OR MECHANICAL, INCLUDING PHOTOCOPYING, RECORDING,  
OR BY ANY INFORMATION STORAGE AND RETRIEVAL SYSTEM.  
THIS DRAWING IS UNCLASSIFIED AND NOT CONTROLLED BY ANALOG DEVICES.

SCHEMATIC			
HW TYPE : Customer Evaluation Z Product(s): AD2437 : N/A			
DESIGN VIEW <DESIGN_VIEW>	DRAWING NO. 02_067219	REV C	
PTD ENGINEER R. WHITNEY	SIZE D	SCALE 1:1	SHEET 8 OF 10





