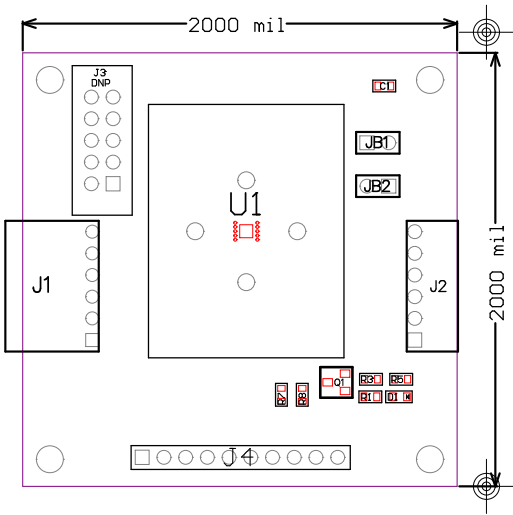



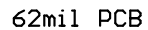
TOP ASSEMBLY



DS9121ATB				
Part Number: ???				
Property of				Rev
 maxim integrated™				A
Drill and Mechanical Layer				
Date: NOV 17 2020 Units in mils				
SIZE	QTY	SYM	PLATED	TOLERANCE
12	15		YES	+/- 0.003
39	1		NO	+/- 0.003
39	36		YES	+/- 0.003
47	1		NO	+/- 0.003
67	4		YES	+/- 0.003
125	4		NO	+/- 0.003

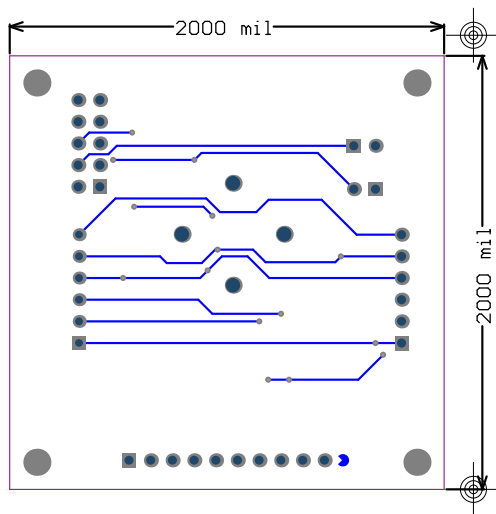
- Notes:
1. Large soldermask void is normal and necessary under U1 socket
 2. Material: RoHS Compliant FR-4 or similar laminate material
 3. Board Dimensions: (2000 x 2000 mils)
 4. Board Thickness: 62 mils +/- 10%
 5. Layers: 2 (Top, Bottom)
 6. Minimum Trace/Spacing: 10 trace - 6 space
 7. Copper Thickness: 1oz on all layers
 8. Surface mount pads: 28 Through Hole Pads: 36 Nonplated through holes: 6 plated mounting holes: 4
 9. Soldermask: GREEN
 10. Legend: White. top side only
 11. Plating: ENIG
 12. Finish: Most Economical Lead free and RoHS compliant process
 13. Vendor Logo & date code: Allowed on bottom side only
 14. Total Drill hole quantity: 61 Slot Holes: 0 Smallest hole size: 12mil
 15. Tolerances:
 - Plated-through holes +/- 3 mil
 - Pattern to pattern +/- 6 mil
 - Legend to legend no preference
 - Soldermask to pattern +/- 6 mil
 16. Electrical testing needed: YES


62mil PCB



SIZE	QTY	SYM	PLATED	TOLERANCE
12	15	.	YES	+/- 0.003
39	1		NO	+/- 0.003
39	36		YES	+/- 0.003
47	1		NO	+/- 0.003
67	4		YES	+/- 0.003
125	4		NO	+/- 0.003

1. Large soldermask void is normal and necessary under UI socket
2. Material: RoHS Compliant FR-4 or similar laminate material
3. Board Dimensions: (2000 x 2000 mils)
4. Board Thickness: 62 mils +/- 10%
5. Layers: 2 (Top, Bottom)
6. Minimum Trace/Spacing: 10 trace - 6 space
7. Copper Thickness: 1oz on all layers
8. Surface mount pads: 28 Through Hole Pads: 36 Nonplated through holes: 6 plated mounting holes: 4
9. Soldermask: GREEN
10. Legend: White, top side only
11. Plating: ENIG
12. Finish: Most Economical Lead free and RoHS compliant process
13. Vendor Logo & date code: Allowed on bottom side only
14. Total Drill hole quantity: 61 Slot Holes: 0 Smallest hole size: 12mil
15. Tolerances:
 - Plated-through holes +/- 3 mil
 - Pattern to pattern +/- 6 mil
 - Legend to legend no preference
 - Soldermask to pattern +/- 6 mil
16. Electrical testing needed: YES



DS9121ATB	
Part Number: ???	
Property of	Rev
 maxim integrated™	A
Drill and Mechanical Layer	
Date:NOV 17 2020 Units in mils	

SIZE	QTY	SYM	PLATED	TOLERANCE
12	15	.	YES	+/- 0.003
39	1		NO	+/- 0.003
39	36		YES	+/- 0.003
47	1		NO	+/- 0.003
67	4		YES	+/- 0.003
125	4		NO	+/- 0.003

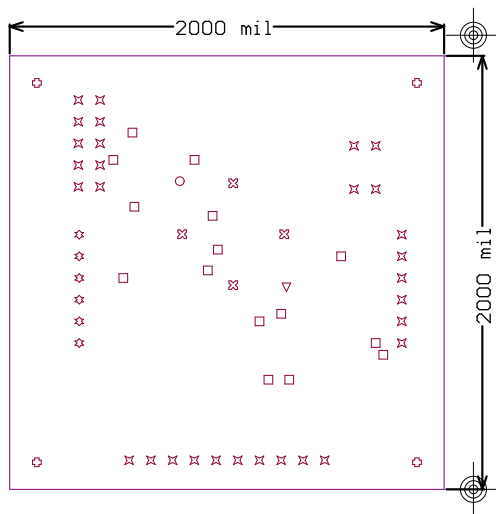
Notes:

1. Large soldermask void is normal and necessary under U1 socket
2. Material: RoHS Compliant FR-4 or similar laminate material
3. Board Dimensions: (2000 x 2000 mils)
4. Board Thickness: 62 mils +/- 10%
5. Layers: 2 (Top, Bottom)
6. Minimum Trace/Spacing: 10 trace - 6 space
7. Copper Thickness: 1oz on all layers
8. Surface mount pads: 28 Through Hole Pads: 36 Nonplated through holes: 6 plated mounting holes: 4
9. Soldermask: GREEN
10. Legend: White. top side only
11. Plating: ENIG
12. Finish: Most Economical Lead free and RoHS compliant process
13. Vendor Logo & date code: Allowed on bottom side only
14. Total Drill hole quantity: 61 Slot Holes: 0 Smallest hole size: 12mil
15. Tolerances:
 - Plated-through holes +/- 3 mil
 - Pattern to pattern +/- 6 mil
 - Legend to legend no preference
 - Soldermask to pattern +/- 6 mil
16. Electrical testing needed: YES

62mil PCB

Bottom Metal

IsaM mottoB



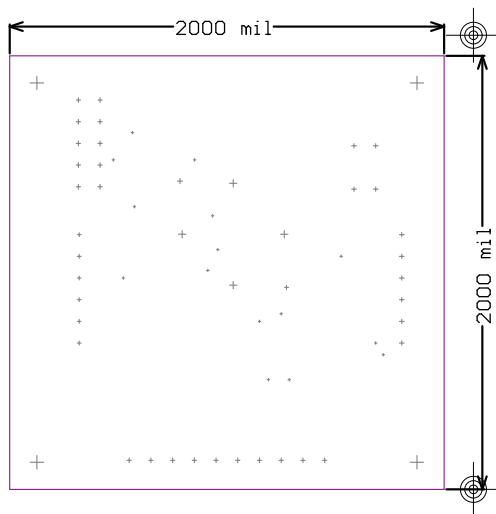
DS9121ATB	
Part Number: ???	
Property of	Rev
maxim integrated™	A
Drill and Mechanical Layer	
Date: NOV 17 2020 Units in mils	


SIZE	QTY	SYM	PLATED	TOLERANCE
12	15	□	YES	+/- 0.003
39	1	▽	NO	+/- 0.003
39	36	◇	YES	+/- 0.003
47	1	○	NO	+/- 0.003
67	4	⊗	YES	+/- 0.003
125	4	⊕	NO	+/- 0.003

Notes:

1. Large soldermask void is normal and necessary under U1 socket
2. Material: RoHS Compliant FR-4 or similar laminate material
3. Board Dimensions: (2000 x 2000 mils)
4. Board Thickness: 62 mils +/- 10%
5. Layers: 2 (Top, Bottom)
6. Minimum Trace/Spacing: 10 trace - 6 space
7. Copper Thickness: 1oz on all layers
8. Surface mount pads: 28 Through Hole Pads: 36 Nonplated through holes: 6 plated mounting holes: 4
9. Soldermask: GREEN
10. Legend: White. top side only
11. Plating: ENIG
12. Finish: Most Economical Lead free and RoHS compliant process
13. Vendor Logo & date code: Allowed on bottom side only
14. Total Drill hole quantity: 61 Slot Holes: 0 Smallest hole size: 12mil
15. Tolerances:
 - Plated-through holes +/- 3 mil
 - Pattern to pattern +/- 6 mil
 - Legend to legend no preference
 - Soldermask to pattern +/- 6 mil
16. Electrical testing needed: YES

62mil PCB



DS9121ATB	
Part Number: ???	
Property of  maxim integrated™	Rev A
Drill and Mechanical Layer	
Date: NOV 17 2020	Units in mils

SIZE	QTY	SYM	PLATED	TOLERANCE
12	15	-	YES	+/- 0.003
39	1	+	NO	+/- 0.003
39	36	+	YES	+/- 0.003
47	1	+	NO	+/- 0.003
67	4	+	YES	+/- 0.003
125	4	+	NO	+/- 0.003

Notes:

1. Large soldermask void is normal and necessary under U1 socket
2. Material: RoHS Compliant FR-4 or similar laminate material
3. Board Dimensions: (2000 x 2000 mils)
4. Board Thickness: 62 mils +/- 10%
5. Layers: 2 (Top, Bottom)
6. Minimum Trace/Spacing: 10 trace - 6 space
7. Copper Thickness: 1oz on all layers
8. Surface mount pads: 28 Through Hole Pads: 36 Nonplated through holes: 6 plated mounting holes: 4
9. Soldermask: GREEN
10. Legend: White. top side only
11. Plating: ENIG
12. Finish: Most Economical Lead free and RoHS compliant process
13. Vendor Logo & date code: Allowed on bottom side only
14. Total Drill hole quantity: 61 Slot Holes: 0 Smallest hole size: 12mil
15. Tolerances:
 - Plated-through holes +/- 3 mil
 - Pattern to pattern +/- 6 mil
 - Legend to legend no preference
 - Soldermask to pattern +/- 6 mil
16. Electrical testing needed: YES

62mil PCB