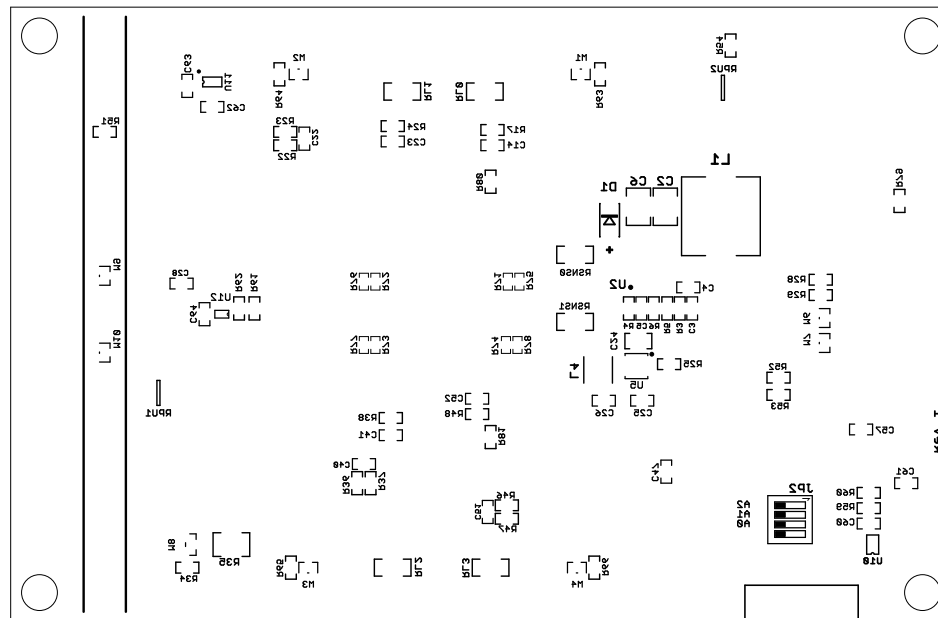

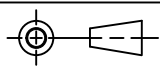


REVISION HISTORY				
ECO	REV	DESCRIPTION	APPROVED	DATE
-	1	PRODUCTION	MIKE P.	09/05/2019



UNLESS OTHERWISE SPECIFIED DIMENSIONS ARE IN INCHES TOLERANCES ON ANGLE: +/- 1° 0.XXX° = +/- 0.01° 0.XXX° = +/- 0.005° INTERPRET DIM AND TOL PER ASME Y14.5M-1994	APPROVALS		 1630 MCCARTHY BLVD. MILPITAS, CA 95033 PH: (408) 432-1900 LTC CONFIDENTIAL FOR CUSTOMER USE ONLY		
	NAME	DATE			
	PCB DES. MIKE P.	9-5-19			
	ENG. MIKE P.	9-5-19			
THIRD ANGLE PROJECTION			TITLE: BOTTOM ASSEMBLY DRAWING LTC2971 2-CHANNEL HV POWER SYSTEM MANAGER		
					
DO NOT SCALE DRAWING	SCALE: NONE		SIZE N/A	IC NO. LTC2971 DEMO CIRCUIT 2875A	REV 1
			FILENAME: DC2875A_Rev1		SHEET 2 OF 13