

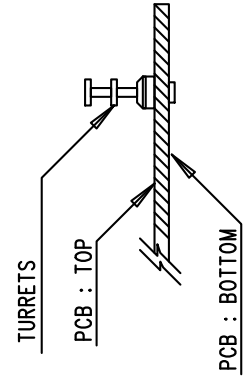
Silkscreen Top


6 DO NOT SEPERATE TWO BOARDS.

NOTES: UNLESS OTHERWISE SPECIFIED

1. WORKMANSHIP SHALL BE IN ACCORDANCE WITH IPC-A-610. MAXIMUM SOLDER TEMPERATURE IS 240 DEG C.
2. ASSEMBLY PROCESS SHALL INCLUDE: REFLOW SOLDER TOP SIDE SMD.
3. PARTS TO OMIT WILL BE SPECIFIED ON THE BILL OF MATERIALS. LOCATIONS OF OMITTED PARTS SHALL BE FREE OF SOLDER. MASK THE SOLDER STENCIL WHERE SMT PARTS ARE OMITTED.
4. INSTALL SHUNTS AS SHOWN ON ASSY DRAWING.
5. DO NOT APPLY ANY KIND OF ASSEMBLY STAMP OR QA STAMP TO ANY BOARD.
6. BREAK EVERY TWO BOARDS FROM PANELS AS SHOWN.

DO NOT SEPERATE TWO BOARDS.





1630 MCCARTHY BLVD  
MILPITAS, CA 95035  
PH: (408)432-1900  
www.linear.com  
LTC CONFIDENTIAL -  
FOR CUSTOMER USE ONLY

TITLE: TOP ASSEMBLY DRAWING

1MHz GENERAL PURPOSE  
POSITIVE/NEGATIVE CONVERTER

SIZE	IC NO.	REV.
N/A	LT3479EDE	1

FILENAME: DC765B-1.PCB

SHT 1 OF 1