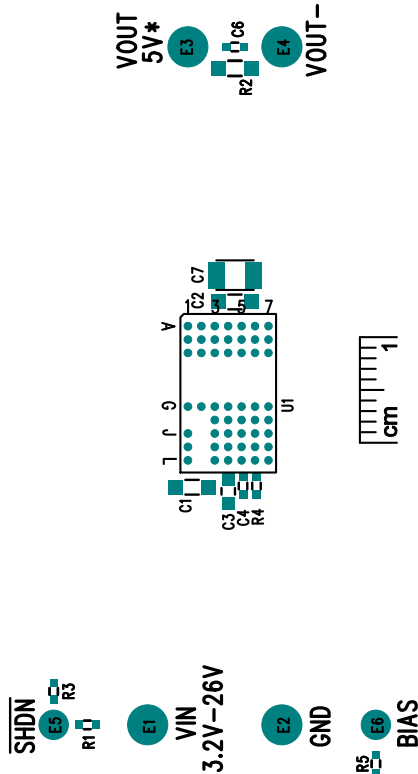
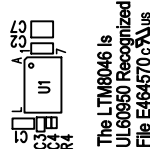


LTM8046

2kV AC 2.5W ISOLATED μ MODULE[®] DC/DC CONVERTER
DEMO CIRCUIT 1559A



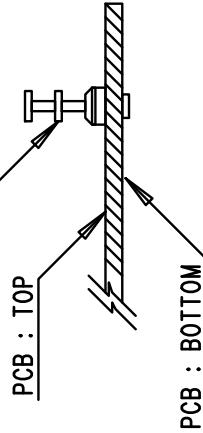
*SEE DEMO MANUAL FOR
OUTPUT CURRENT CAPABILITY
(408) 432-1900
LINEAR TECHNOLOGY
www.linear.com



NOTES: UNLESS OTHERWISE SPECIFIED

1. WORKMANSHIP SHALL BE IN ACCORDANCE WITH IPC-A-610.
2. ASSEMBLY PROCESS SHALL INCLUDE: REFLOW SOLDER TOP SIDE SMD. MAXIMUM SOLDER TEMPERATURE IS 240 DEGREES CELSIUS.
3. PARTS TO OMIT WILL BE SPECIFIED ON THE BILL OF MATERIALS. LOCATIONS OF OMITTED PARTS SHALL BE FREE OF SOLDER. MASK THE SOLDER STENCIL WHERE SMT PARTS ARE OMITTED.
4. INSTALL SHUNTS AS SHOWN ON ASSY DRAWING.
5. DEPANELIZE BOARDS AFTER ASSEMBLY AND ROUTE-OUT THE BREAKOUT TABS ON FOUR SIDES OF THE BOARD EDGE.
6. DO NOT APPLY ANY KIND OF ASSEMBLY STAMP OR QA STAMP TO ANY BOARD.

TURRETS : MILL-MAX 2501-2 OR 2308-2



1630 MCCARTHY BLVD
MILPITAS, CA 95035
PH: (408)432-1900
www.linear.com
LTC CONFIDENTIAL -
FOR CUSTOMER USE ONLY

LINEAR
TECHNOLOGY

TITLE: TOP ASSEMBLY DRAWING

2kV AC 2.5W ISOLATED μ MODULE[®]
DC/DC CONVERTER

SIZE	IC NO.	LTM8046EY	REV.
N/A		DEMO CIRCUIT 1559A	4

FILENAME:	DC1559A-4.PCB	SHT 1 OF 2
-----------	---------------	------------