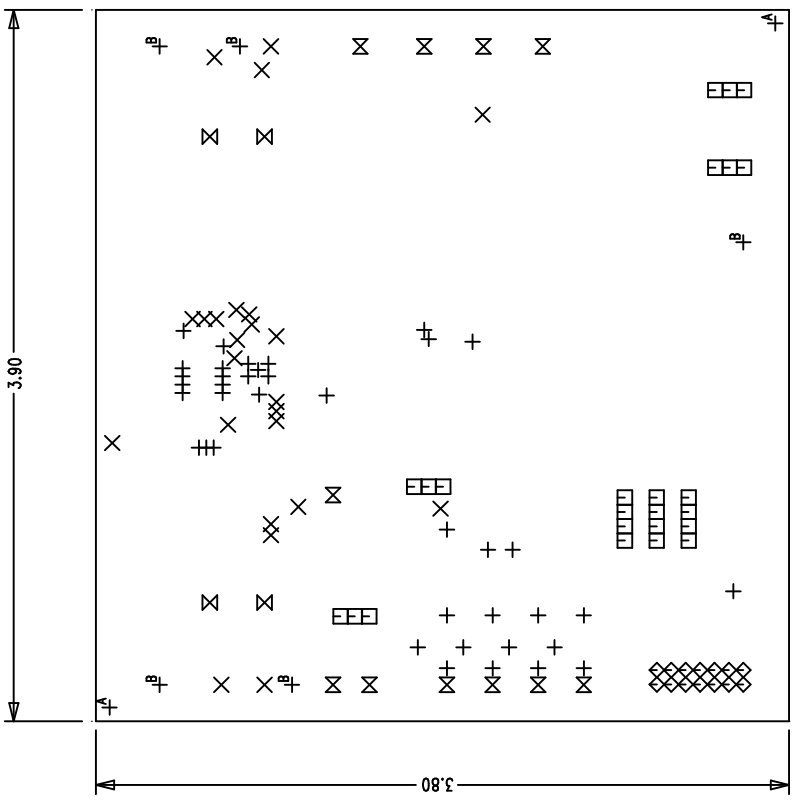


LTC CONFIDENTIAL - For Customer Use Only



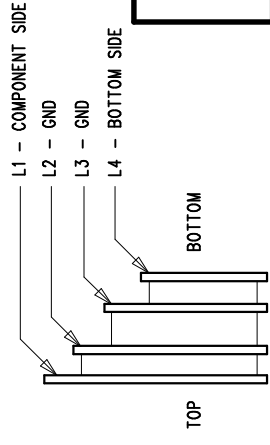
REVISION HISTORY

ECO	REV	DESCRIPTION	DATE	APPROVED

NOTES: UNLESS OTHERWISE SPECIFIED,

- ARTWORK P/N DC874A REV 2.
- FAB PER IPC-A-600
- MATERIAL: EPOXY FIBERGLASS, NEMA GRADE FR-4 .062 +/- .005 INCH THICKNESS WITH 2 OZ. COPPER FINISH ON TWO OUTER LAYERS AND 1 OZ. COPPER ON TWO INTERNAL LAYERS. FLAMABILITY RATING: 94 V-2 MINIMUM .
- SIZE: CUT TO DIMENSIONS AND TOLERANCES SHOWN. 0.00 ARE PRIMARY DATUMS.
- BOARD: SELECTIVE PLATED BOARD. SOLDER MASK OVER BARE COPPER, COLOR, GREEN LPI. WHITE TIN IMMERSION (OMIKRON) BOTH SIDES. SILKSCREEN COMPONENT SIDE WITH WHITE NON-CONDUCTIVE INK. PLATE THRU ALL HOLES WITH COPPER MIN. PLATING THICKNESS: 1 OZ. EXCEPT WHERE PLATING NOT REQUIRED
- DRILL: ALL HOLES SHALL BE DRILLED +/- .003 INCH WITH RESPECT TO CTR. OF DRILLED PAD. ALL HOLES FINISHED SIZE AFTER PLATING.
- DROP ALL UNUSED PADS ON INNER LAYERS.
- DO NOT ALTER ARTWORK e.g. TO ADD LOGO OR DATE CODE.

SIZE	QTY	SYM	PLTD	TOL
10	39	+	YES	+/-0.003
20	24	X	YES	+/-0.003
30	24	□	YES	+/-0.003
35	14	◇	YES	+/-0.003
55	4	⊗	YES	+/-0.005
65	11	⊗	YES	+/-0.005
70	2	⊕	NO	+/-0.005
95	5	⊕	YES	+/-0.01



LAYER CONSTRUCTION

UNLESS OTHERWISE SPECIFIED DIMENSIONS ARE IN INCHES TOLERANCES ON ANGLE ± 1° 2 PLACE ± .01 3 PLACE ± .005 INTERPRET DIM AND TOL PER ASME Y14.5M - 1994	CONTRACT NO.		1630 McCarthy Blvd. Milpitas, CA 95035 . Phone: (408)432-1900 Fax: (408)434-0507	
	APPROVALS	DATE	TITLE FAB, LTC4215IUF, 60W POSITIVE 12V HOT SWAP CONTROLLER w/CURRENT AND VOLTAGE MONITOR	
	DRAWN MEI	12/30/04	SIZE A	CAGE CODE DC874A
	CHECKED		REV 2	
APPROVED		DWG NO.		
DESIGNED BY		SCALE 1/1	FILENAME: 874A-2.PCB	SHEET 1 OF 1