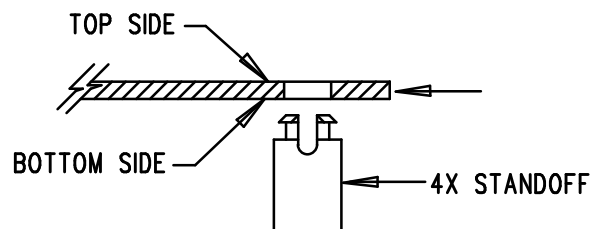


LINEAR TECHNOLOGY SILKSCREEN TOP  
DC1695B-1-LTC3891EFE  
LOW QUIESCENT CURRENT HIGH VOLTAGE  
STEP-DOWN CONVERTER  
DATE: 06-05-12


7. INSTALL 4 STANDOFFS



REVISION HISTORY				
ECO	REV	DESCRIPTION	APP. ENG.	DATE
-	1	PRODUCTION	VICTOR K	06-05-12

## NOTES: UNLESS OTHERWISE SPECIFIED

1. WORKMANSHIP SHALL BE IN ACCORDANCE WITH IPC-A-610.
2. ASSEMBLY PROCESS SHALL INCLUDE: REFLOW SOLDER TOP SIDE SMD
3. PARTS TO OMIT WILL BE SPECIFIED ON THE BILL OF MATERIALS. LOCATIONS OF OMITTED PARTS SHALL BE FREE OF SOLDER. MASK THE SOLDER STENCIL WHERE SMT PARTS ARE OMITTED.
4. INSTALL SHUNTS AS SHOWN ON ASSY DRAWING.
5. DEPANELIZE BOARDS AFTER ASSEMBLY AND ROUTE-OUT THE BREAKOUT TABS ON FOUR SIDES OF THE BOARD EDGE.
6. DO NOT APPLY ANY KIND OF ASSEMBLY STAMP OR QA STAMP TO ANY BOARD.

APPROVALS		 <div style="font-size: small;"> 1630 MCCARTHY BLVD MILPITAS, CA 95035 PH: (408)432-1900 www.linear.com LTC CONFIDENTIAL- FOR CUSTOMER USE ONLY </div>		
PCB DES.	AK			
APP ENG.	VICTOR K			
		TITLE: TOP ASSEMBLY DRAWING LOW QUIESCENT CURRENT HIGH VOLTAGE STEP-DOWN CONVERTER		
		SIZE N/A	IC NO. LTC3891EFE DEMO CIRCUIT 1695B	REV. 1
SCALE = NONE		FILENAME: DC1695A-1.PCB		SHT 1 OF 1